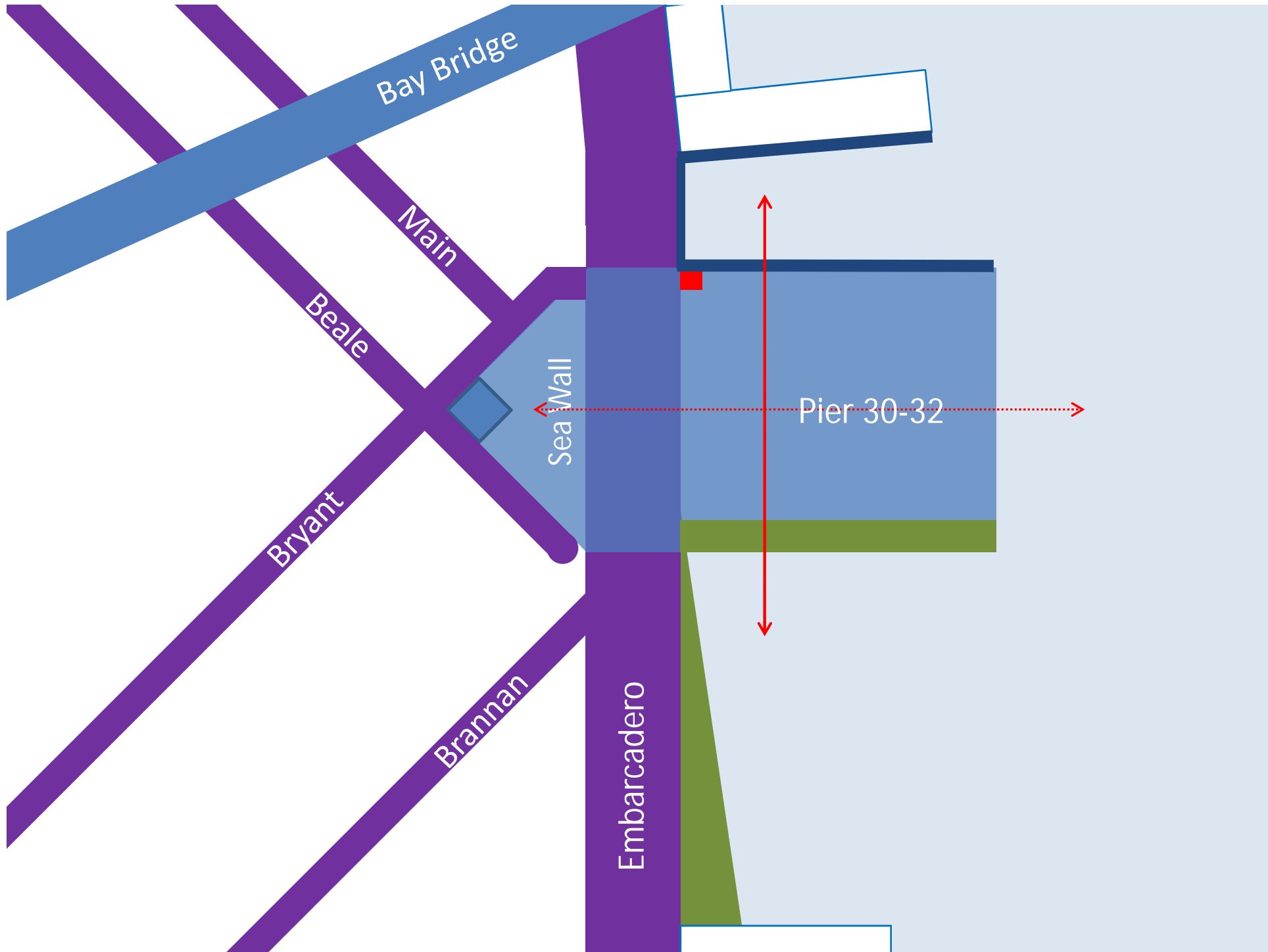
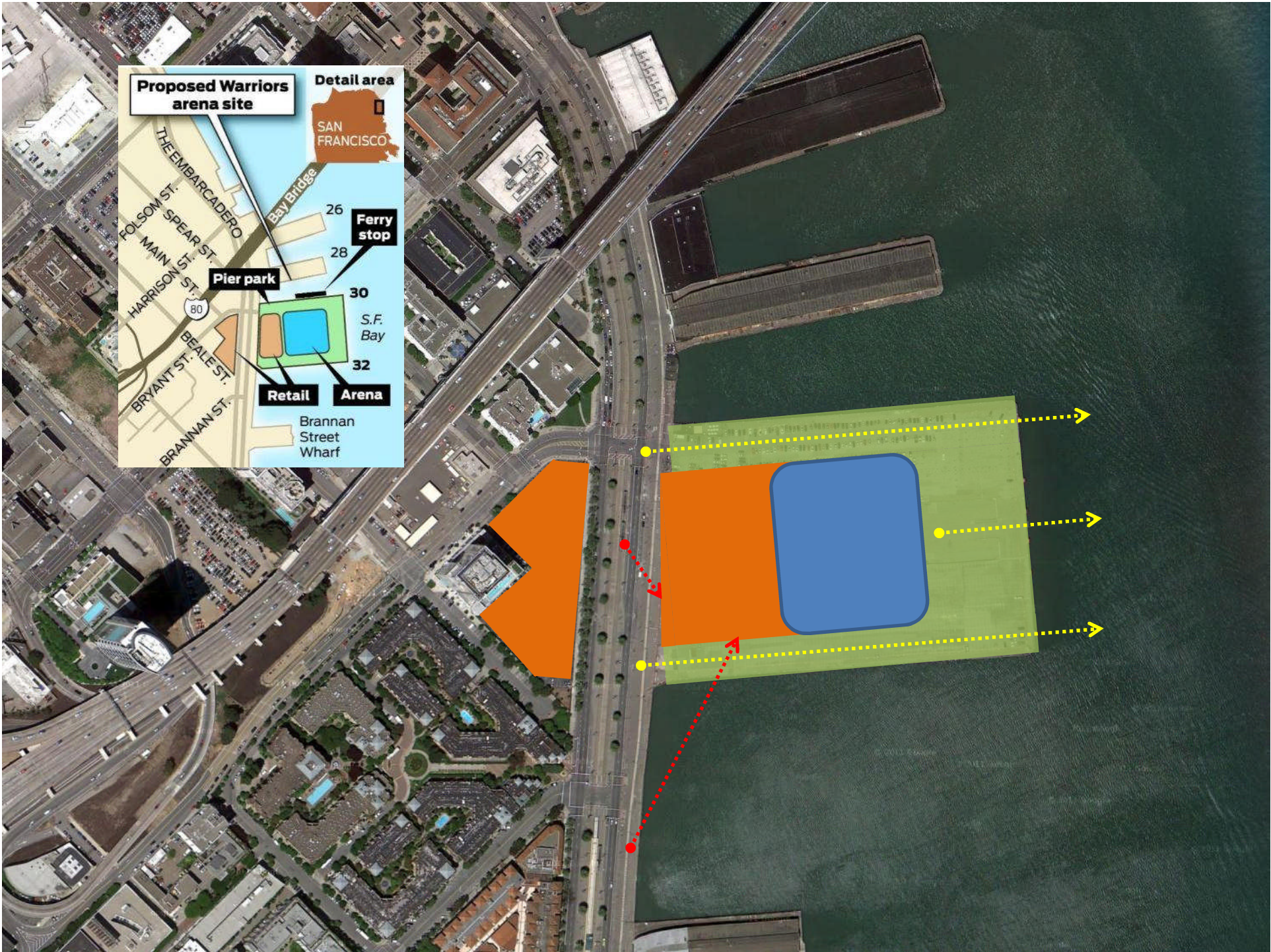


Golden State Warriors

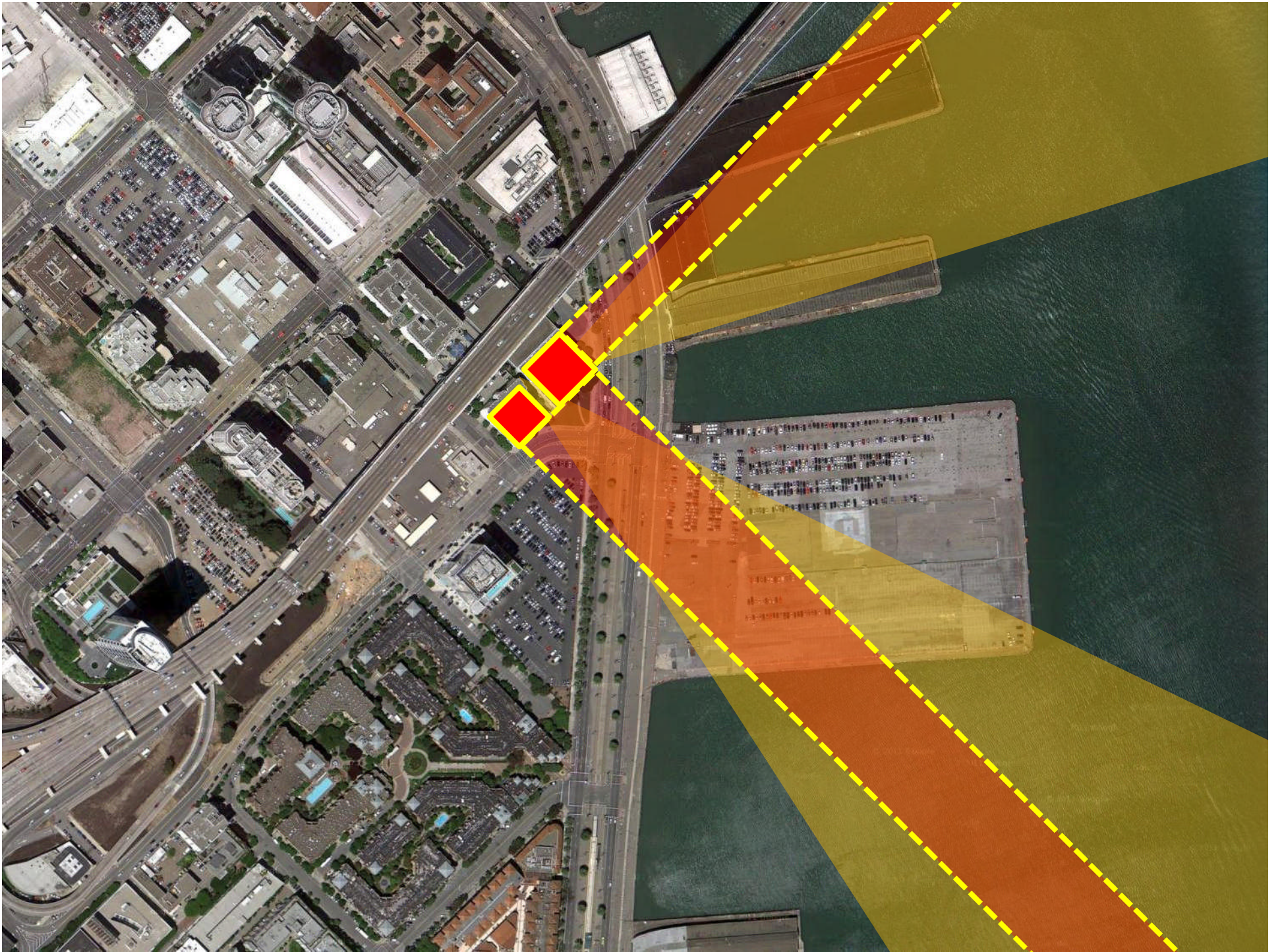
Board of Supervisors
Land Use Committee

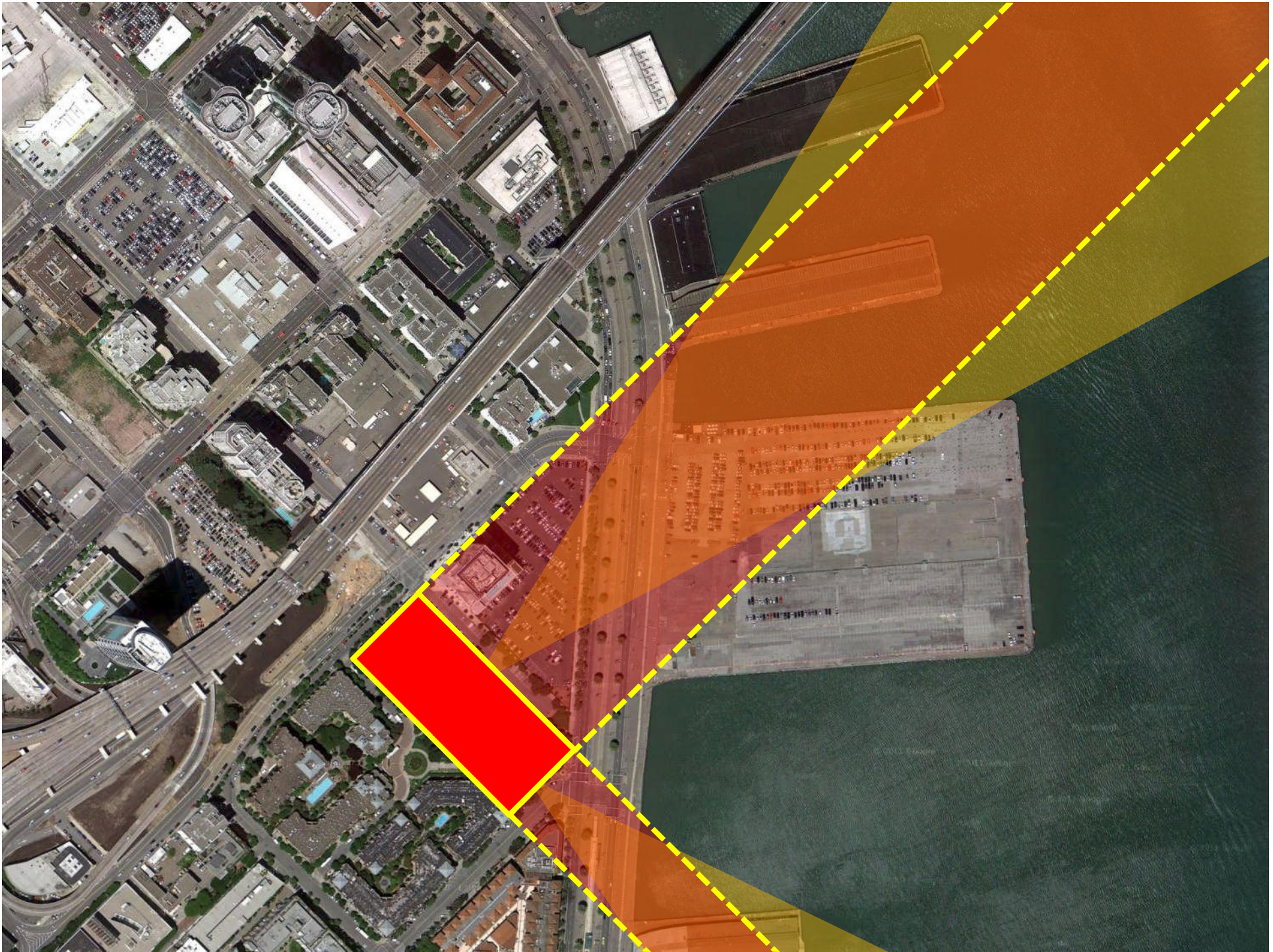
19 November 2012

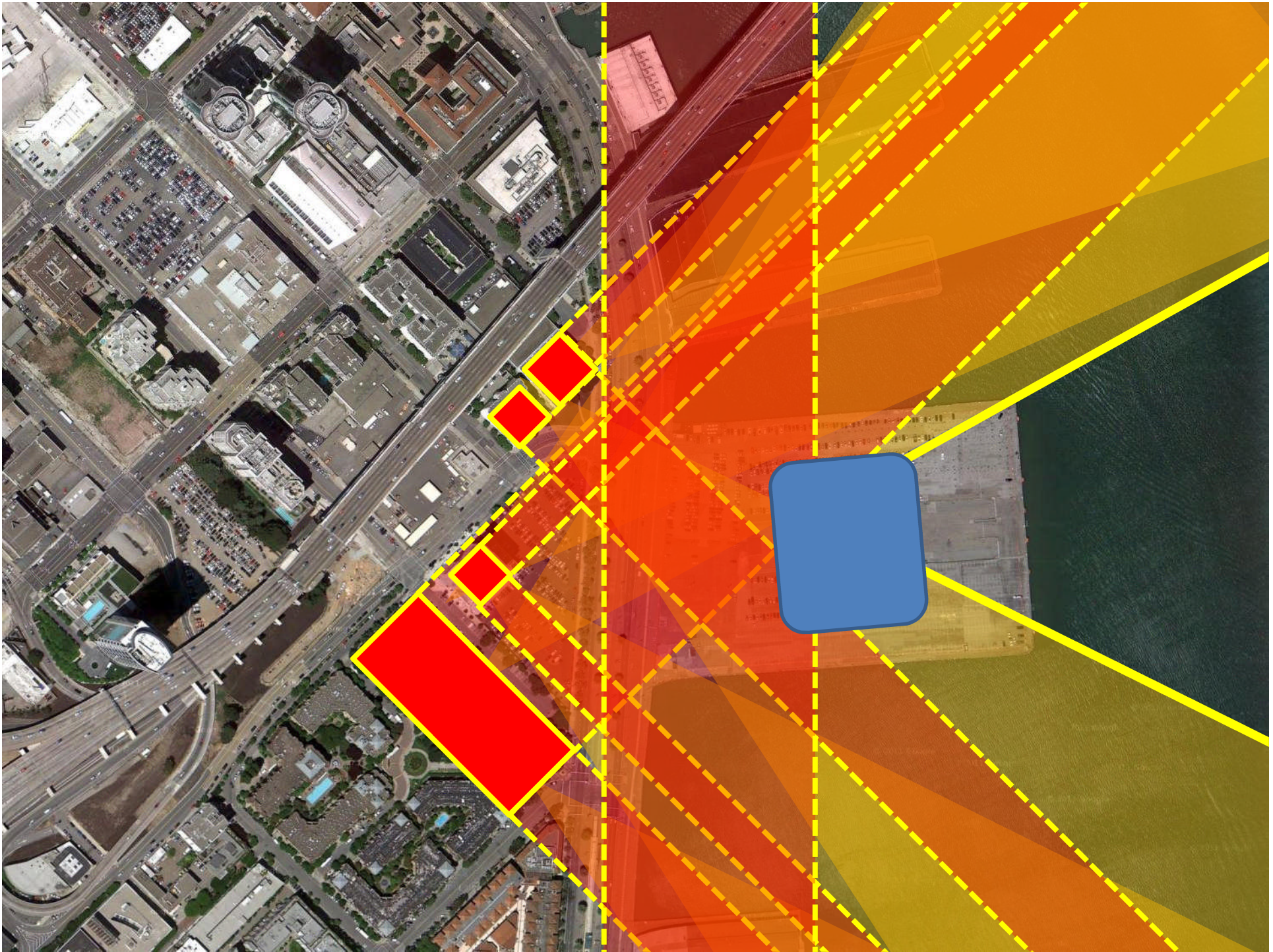


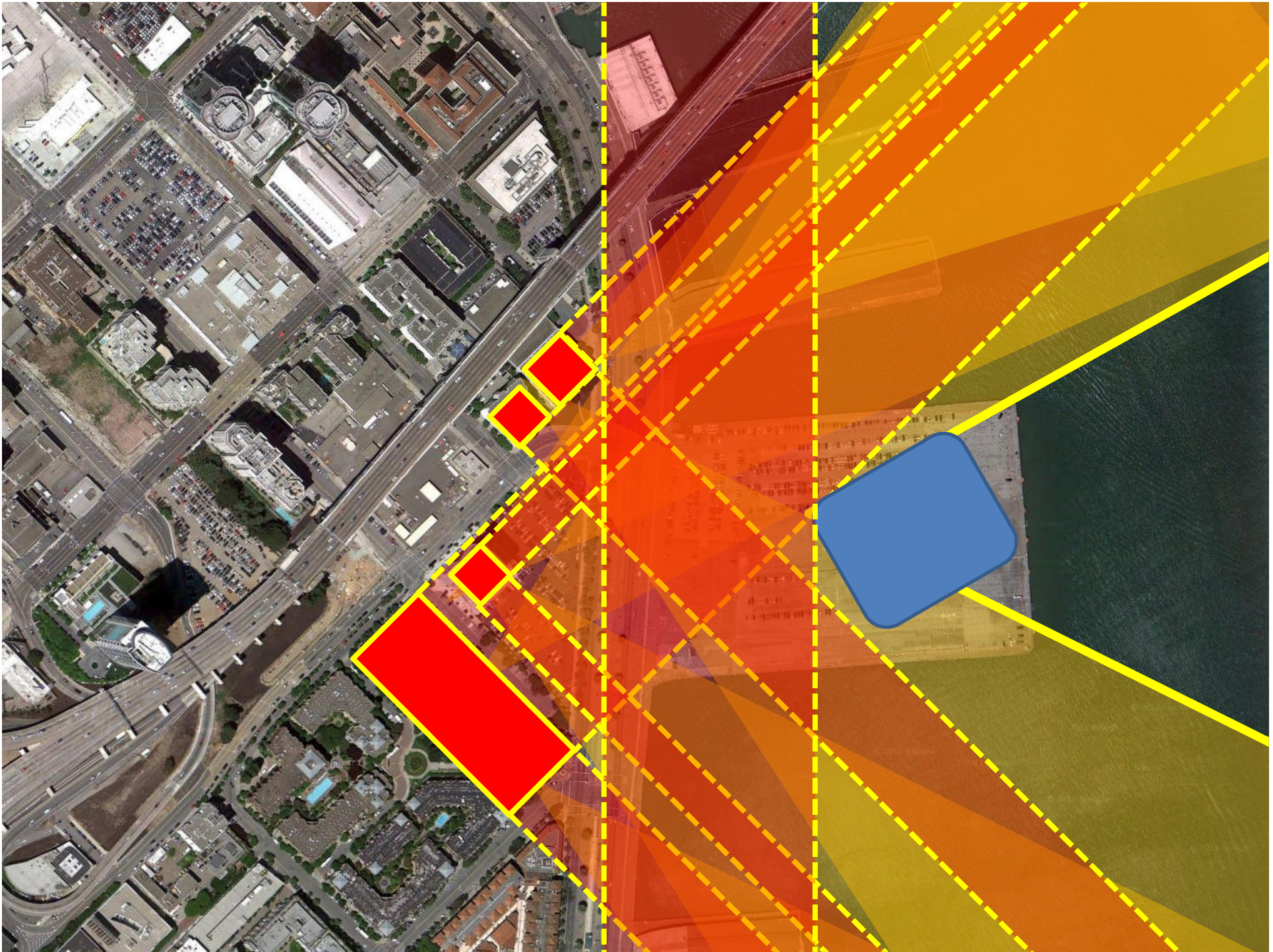






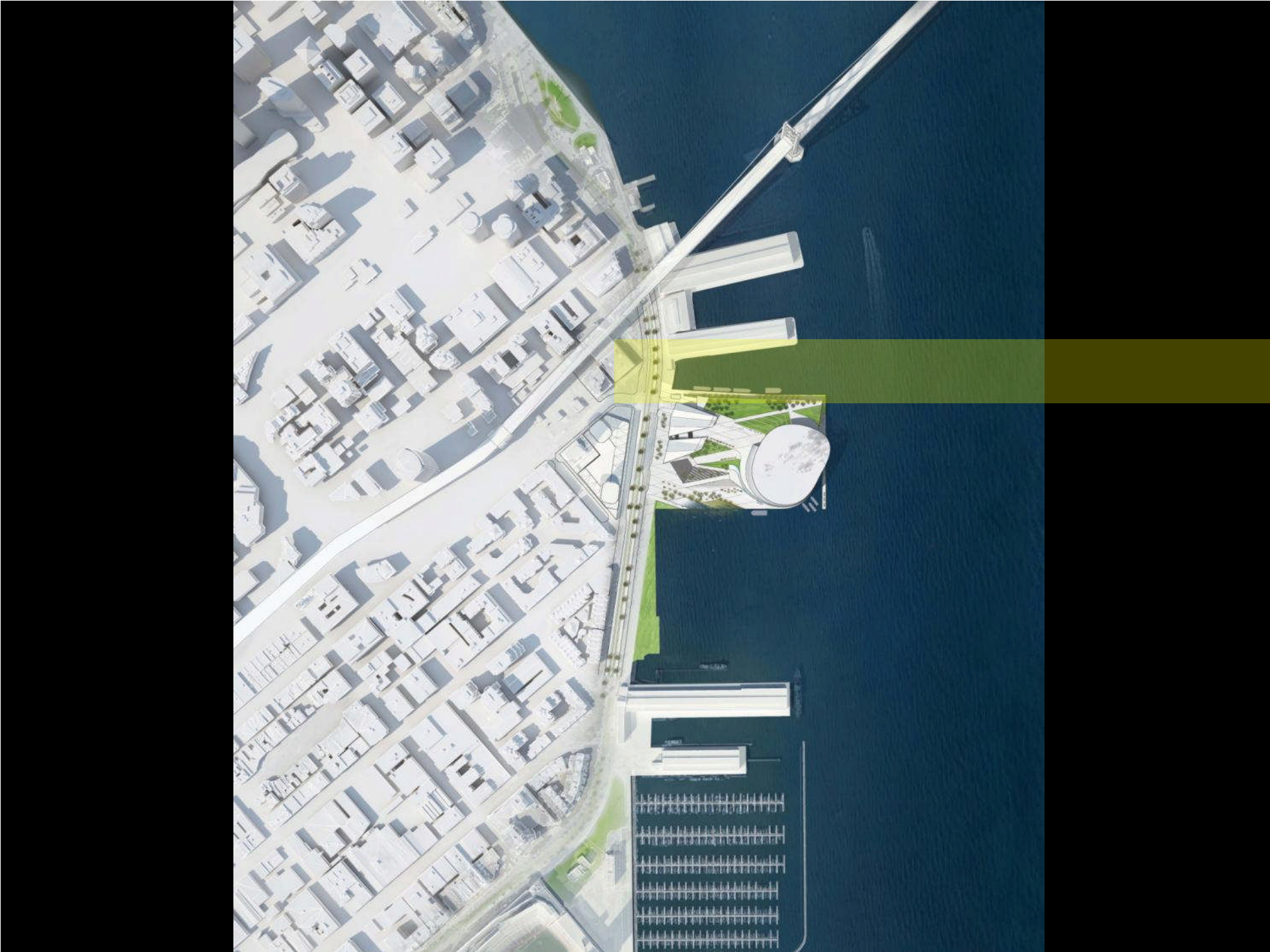


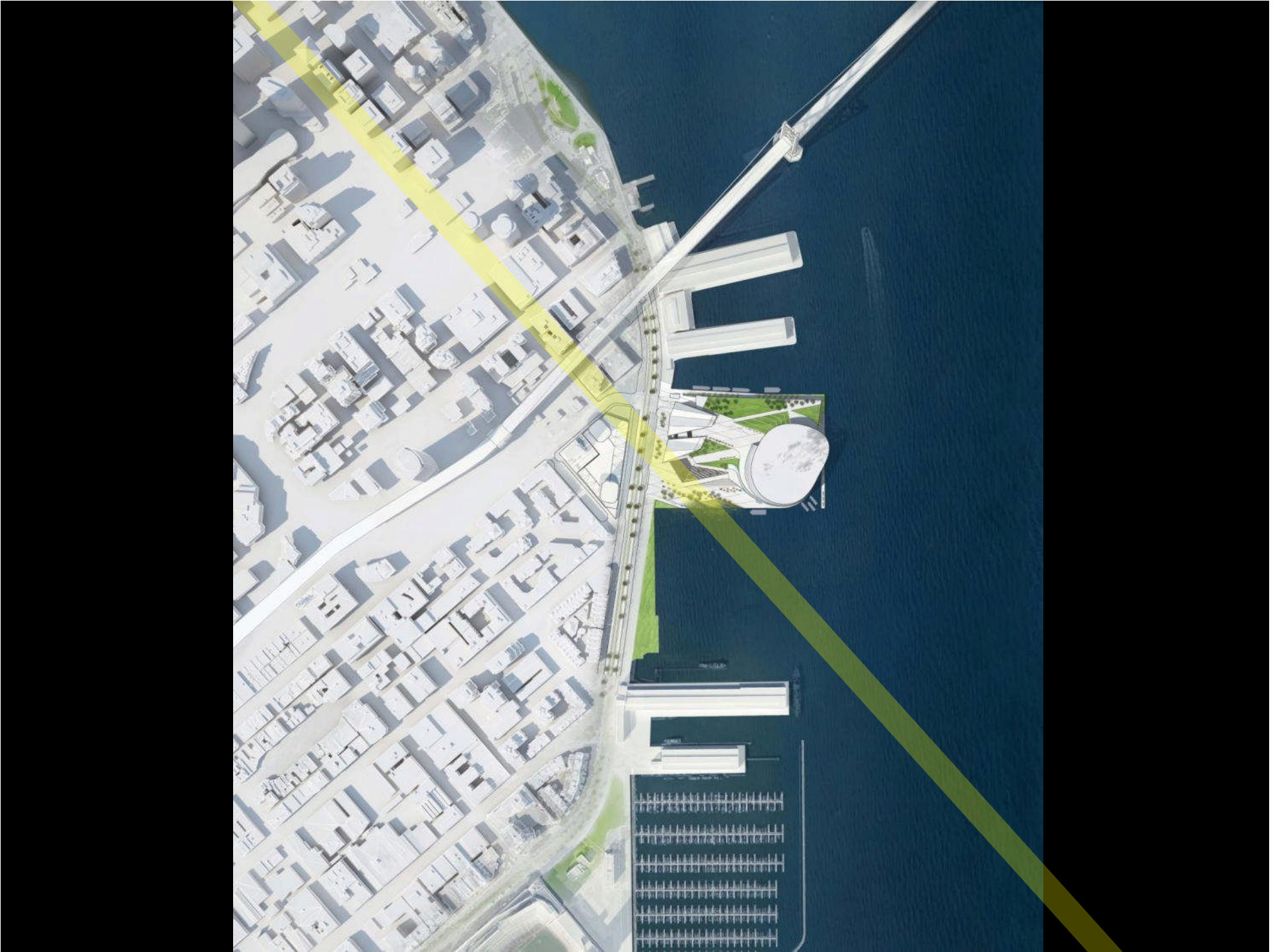


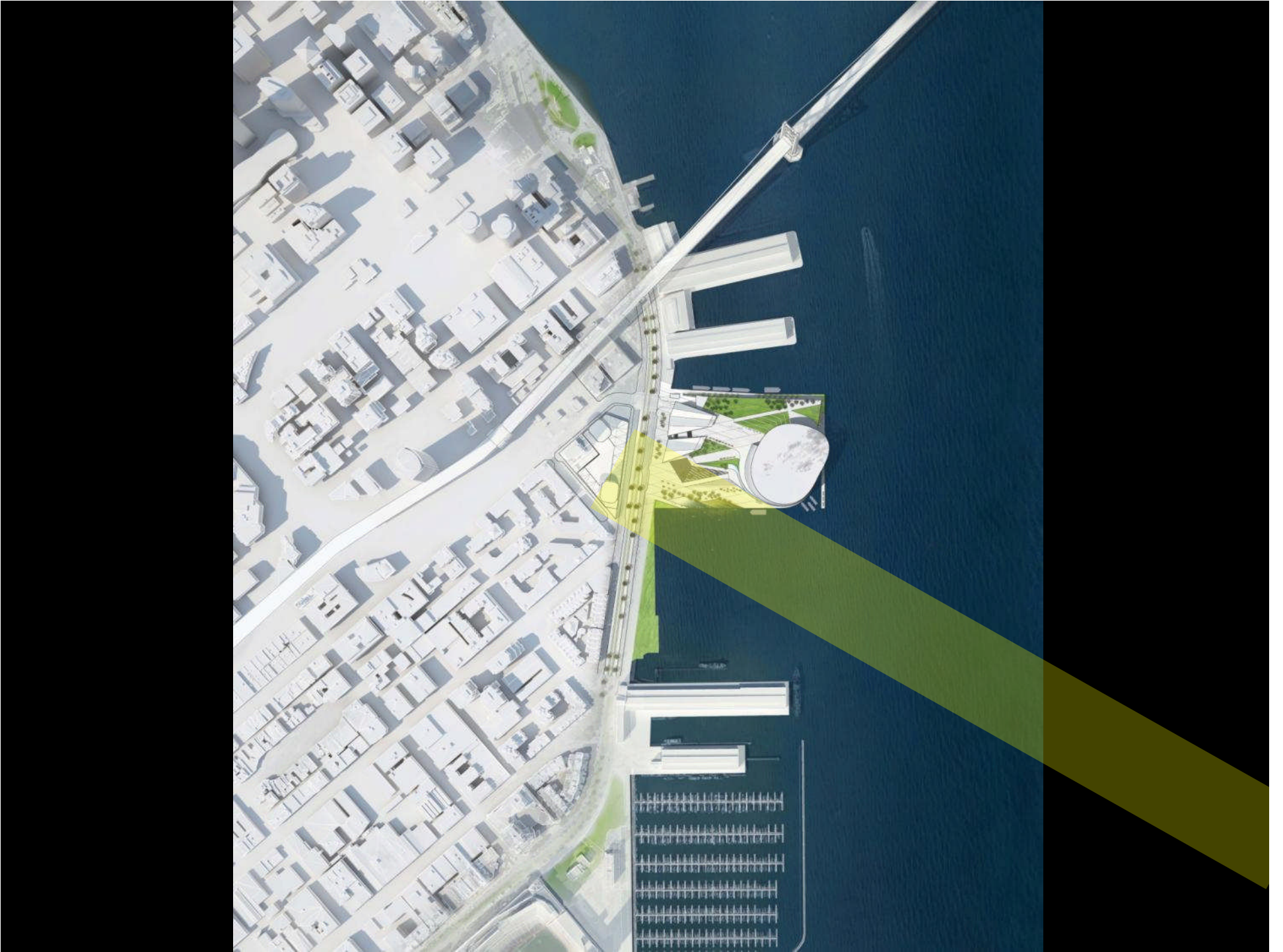


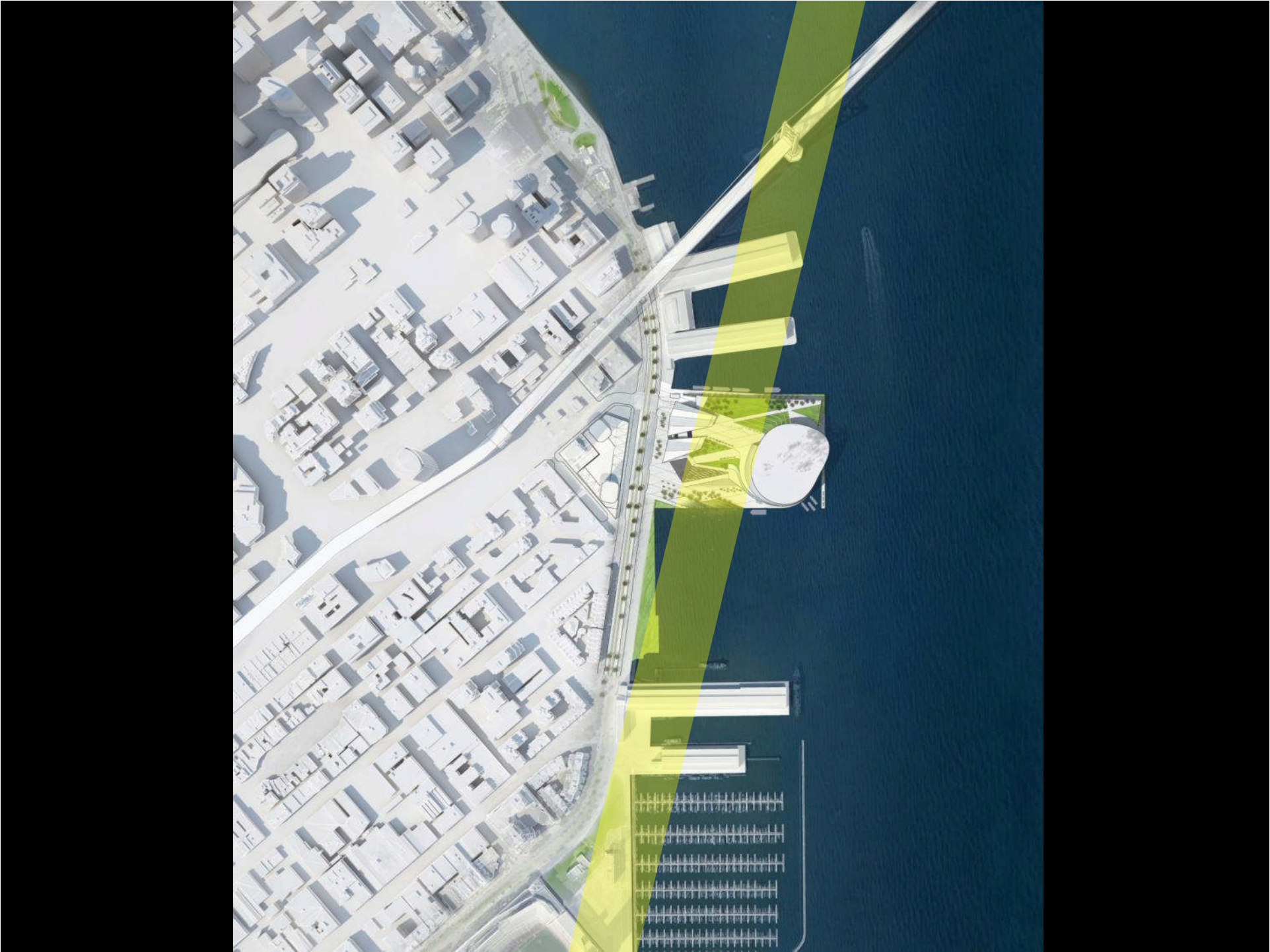


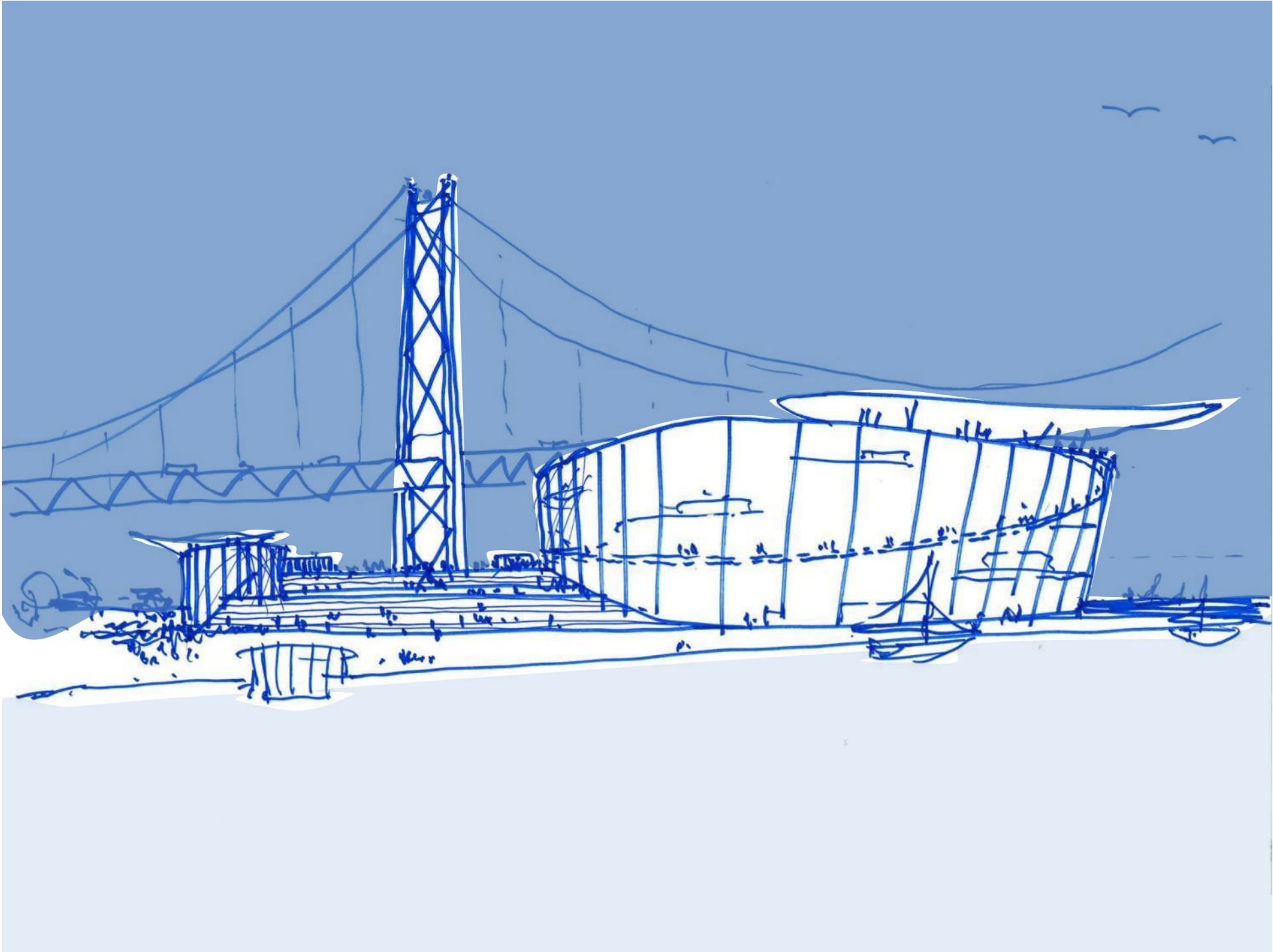








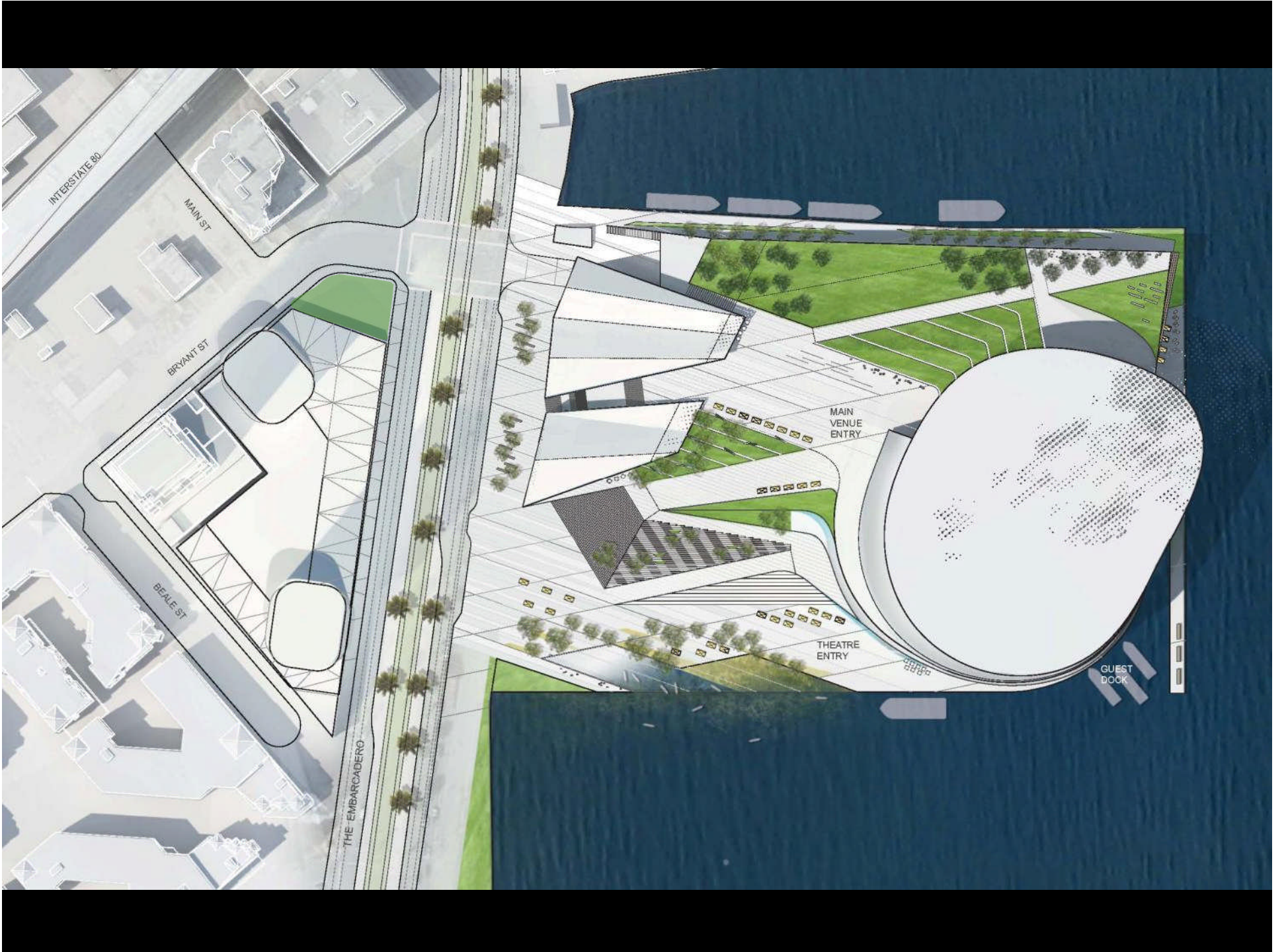


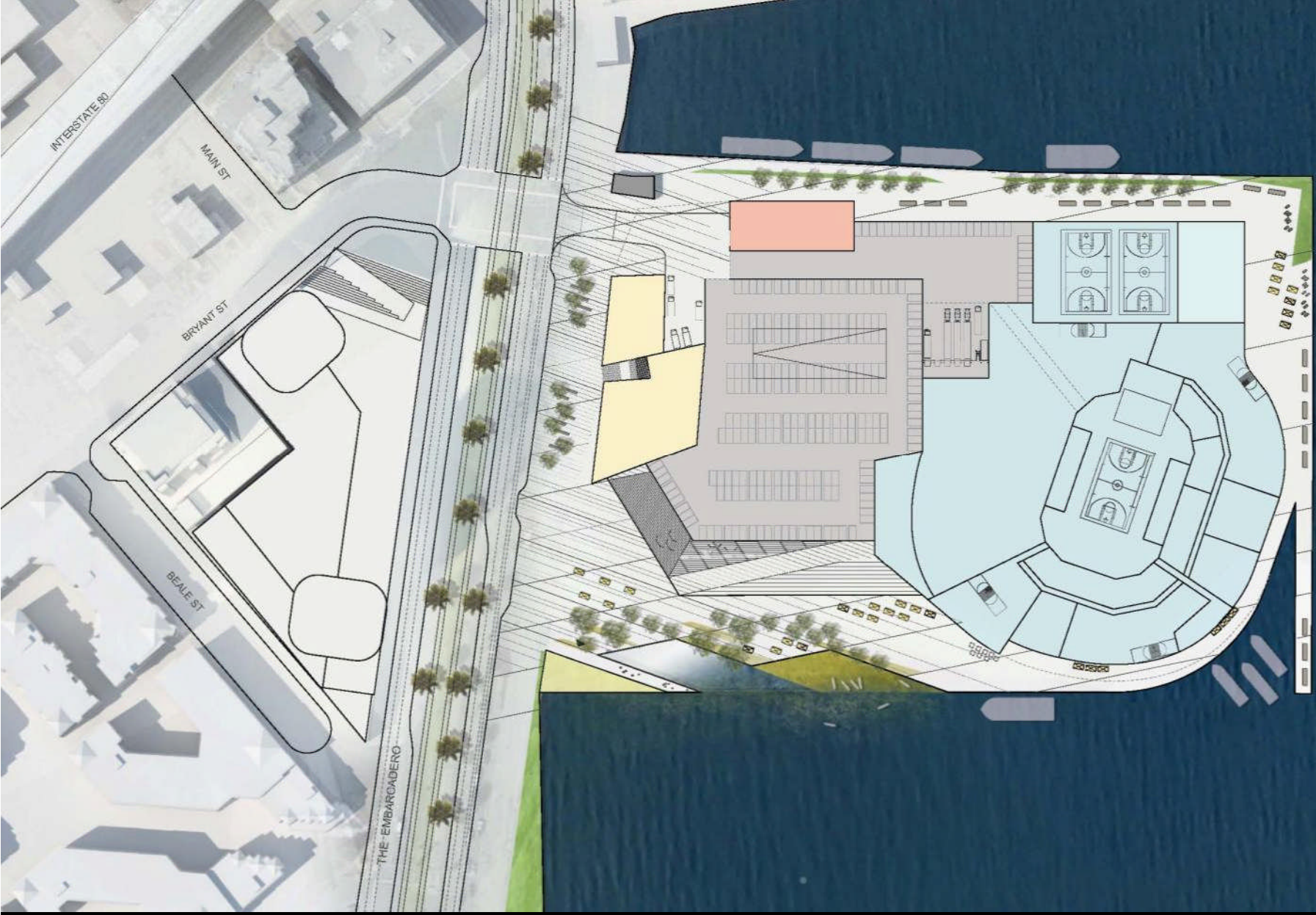


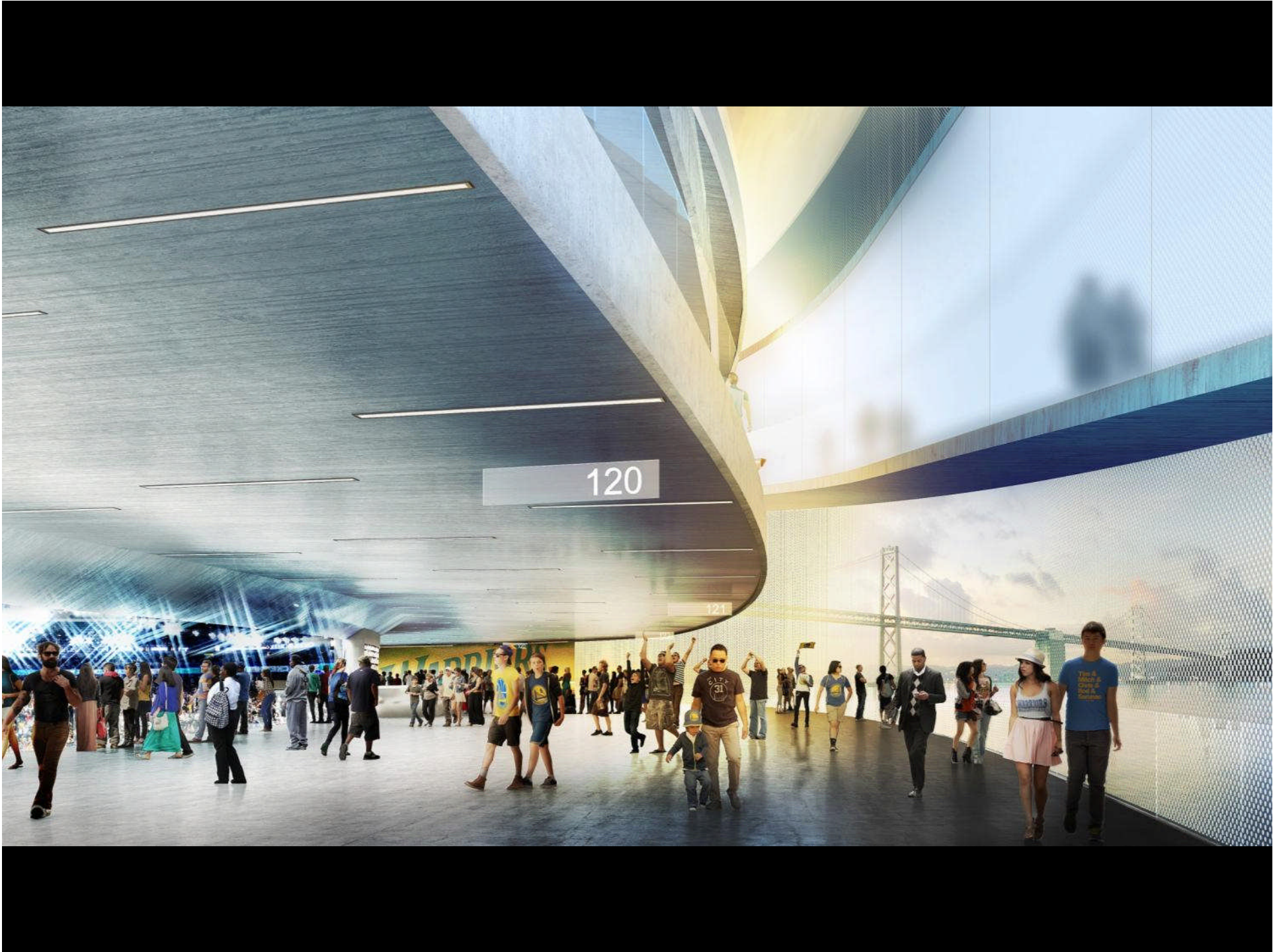


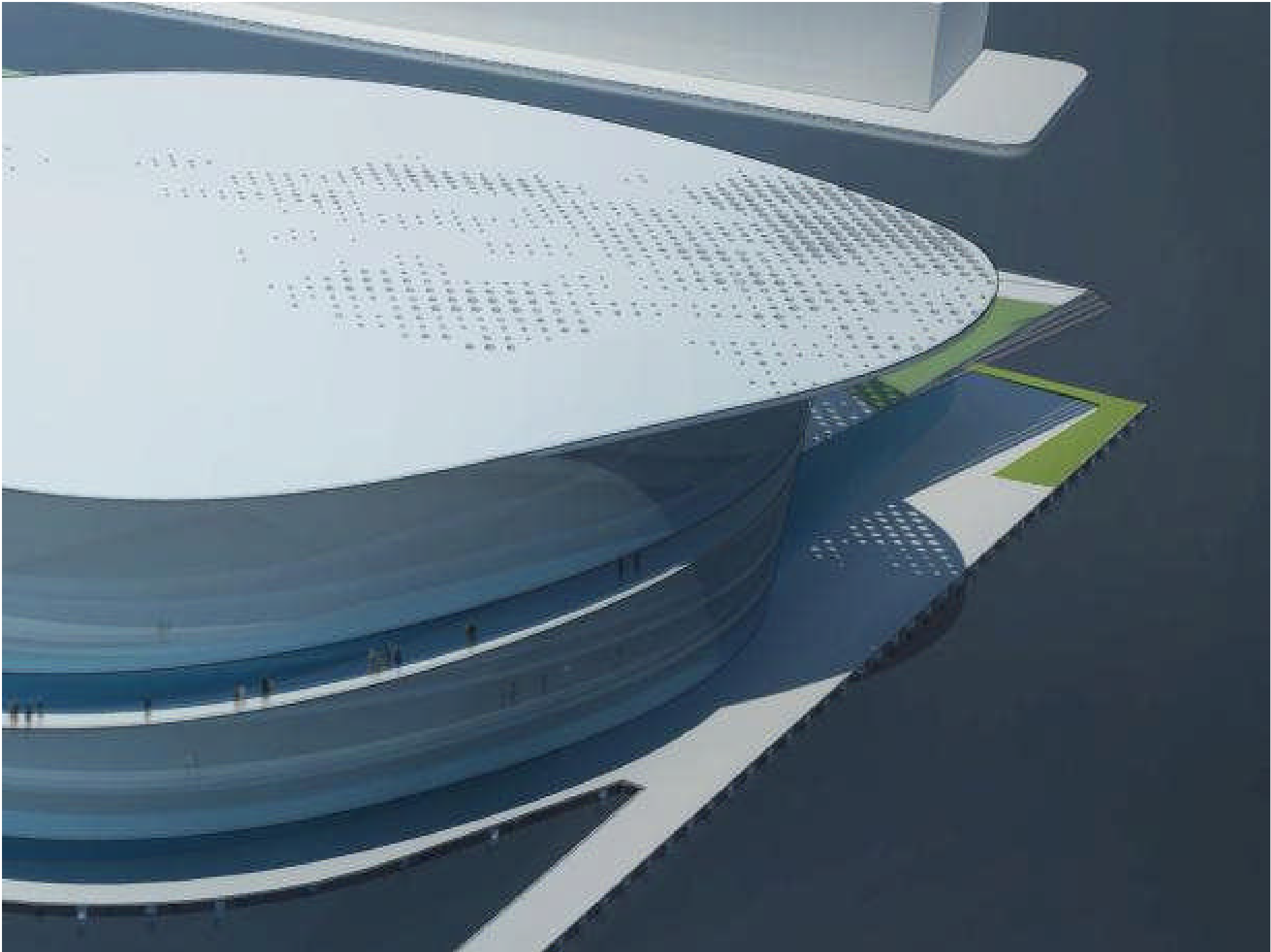


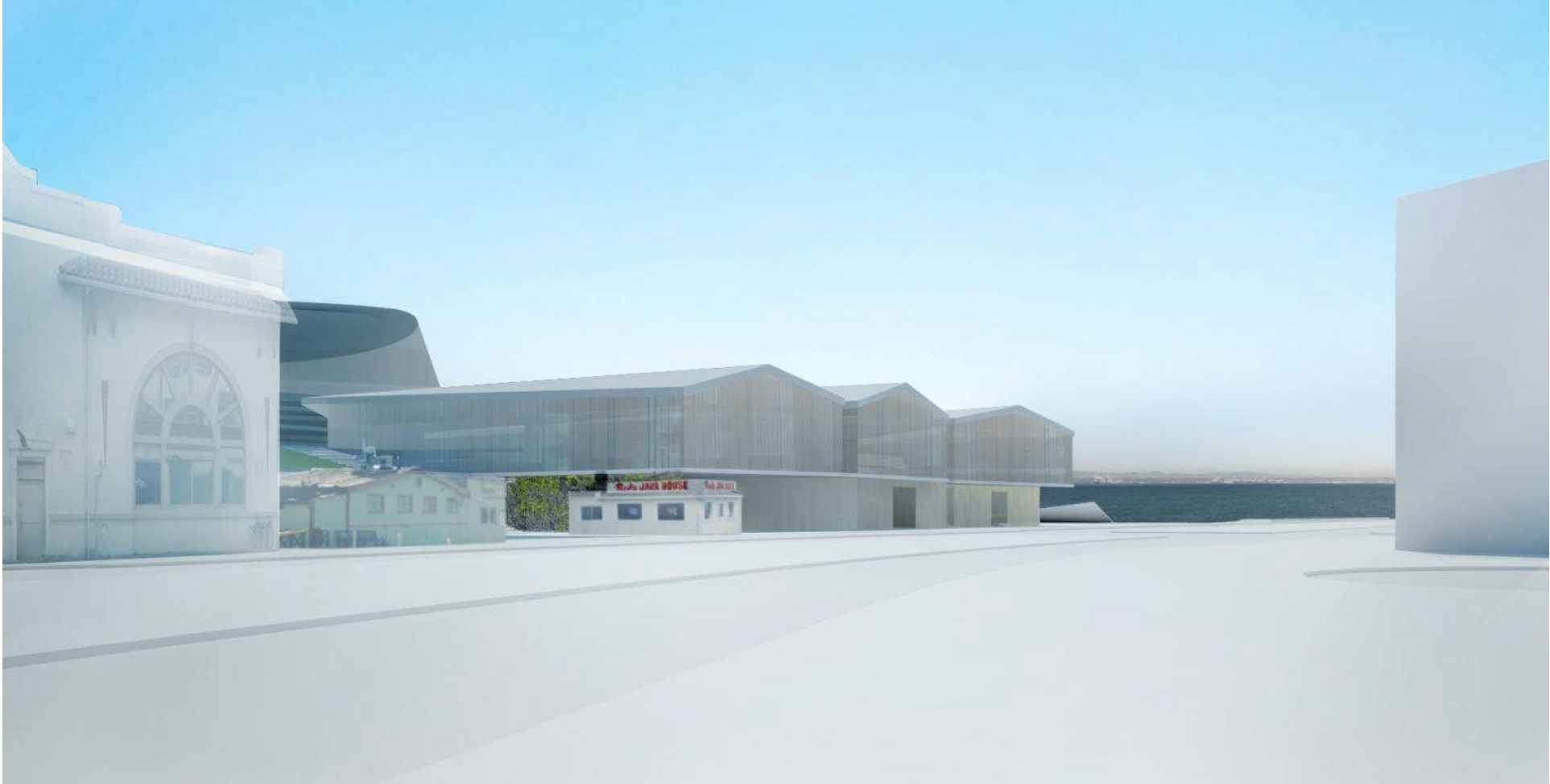


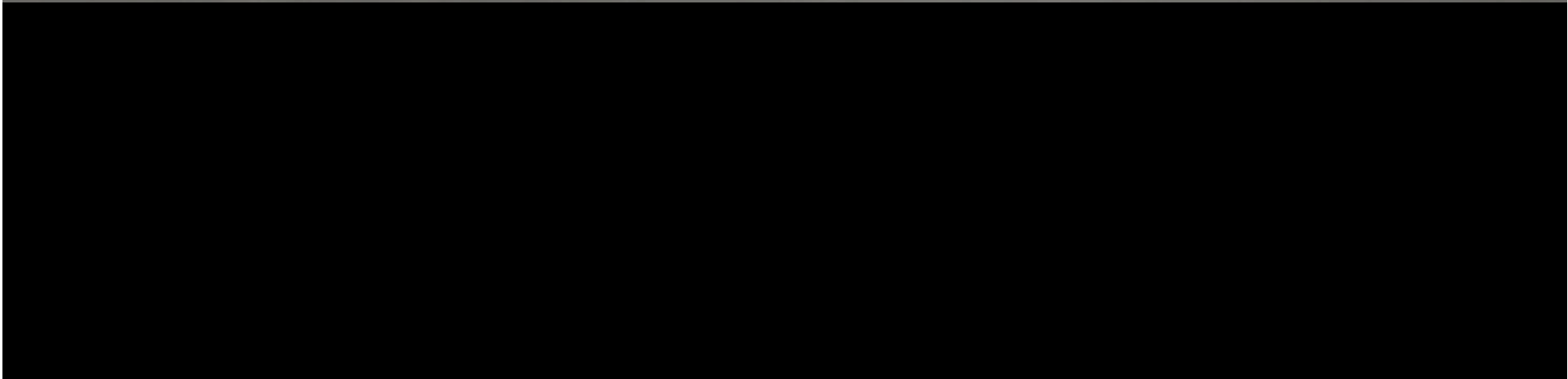
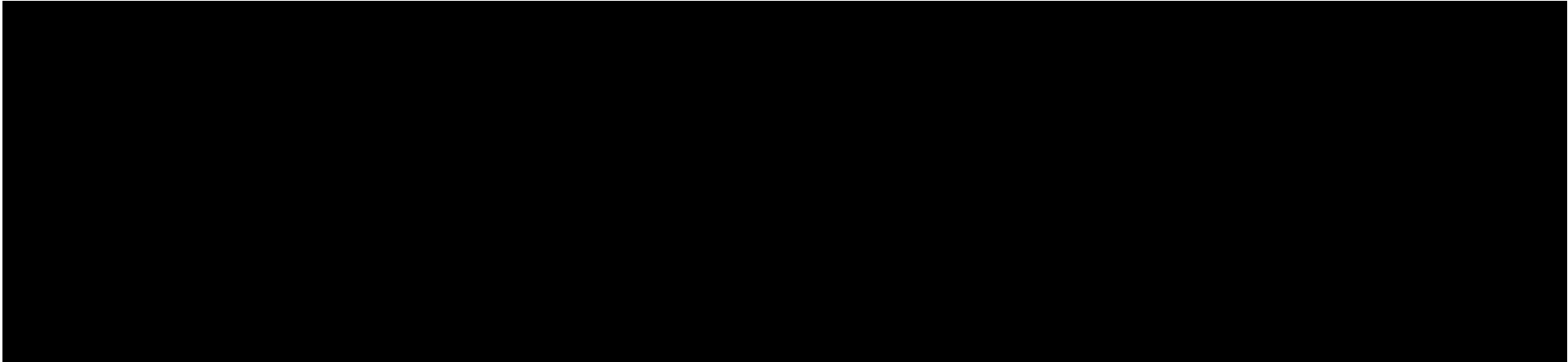


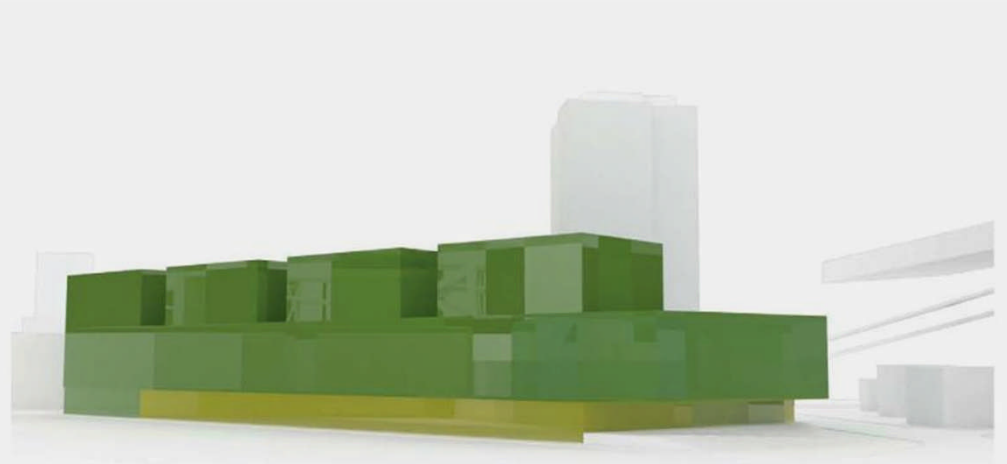
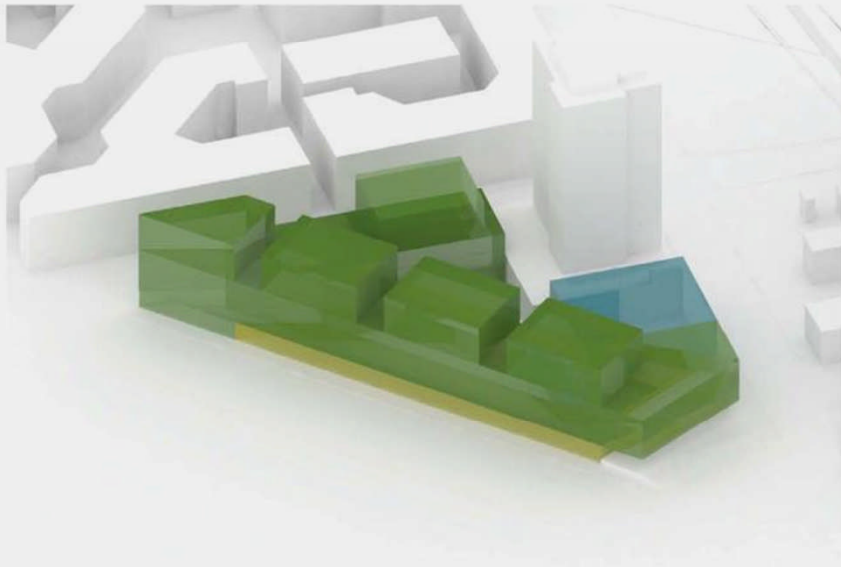





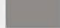


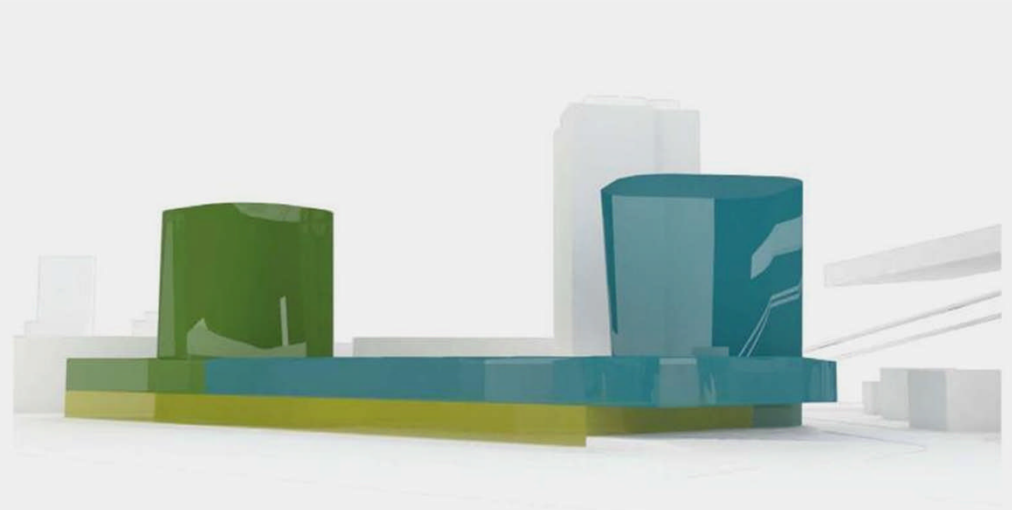
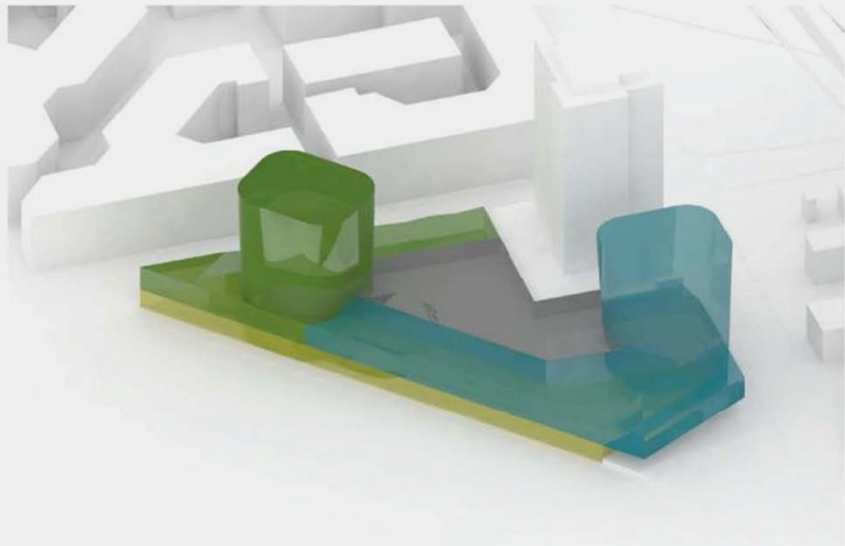




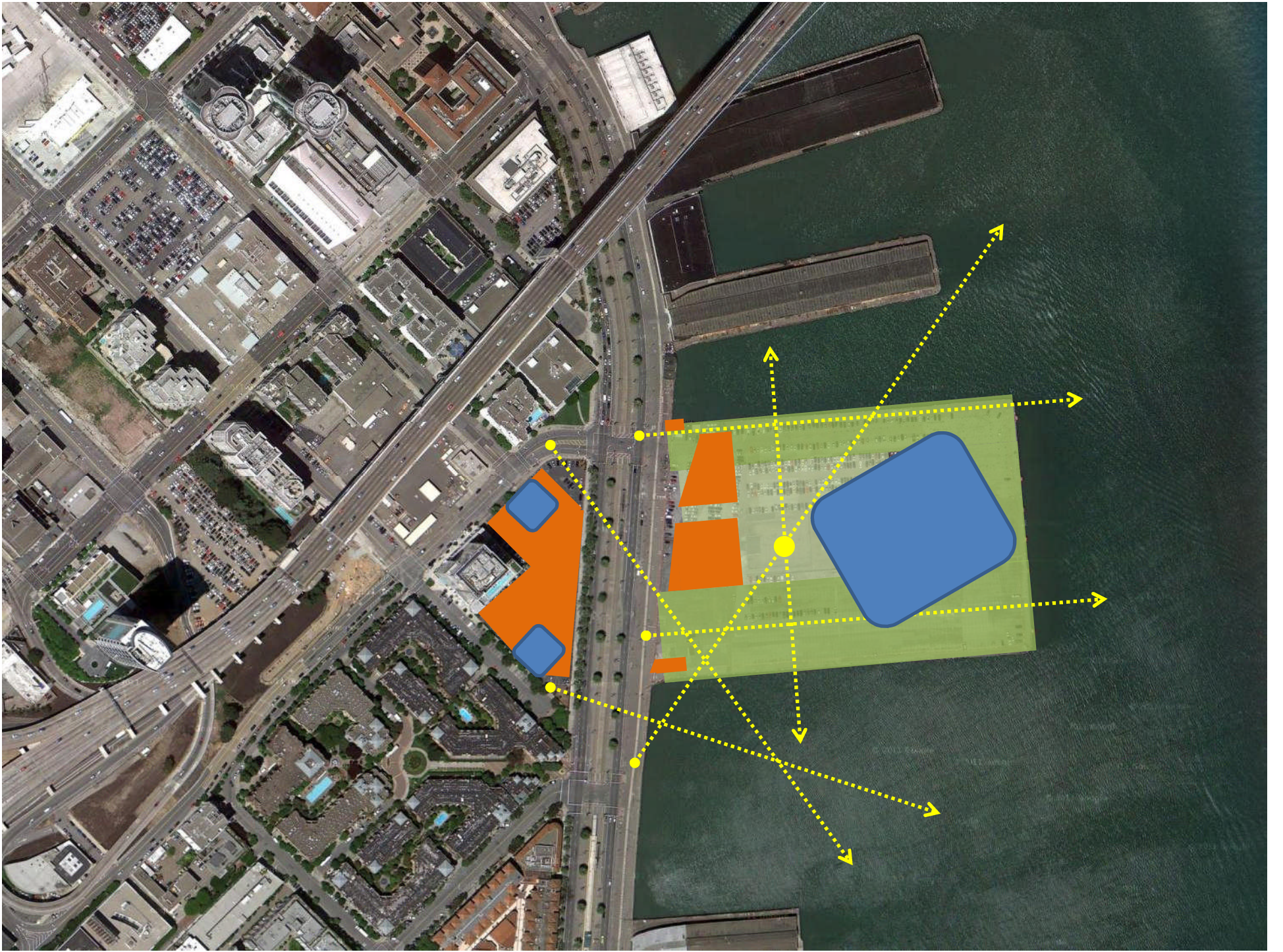


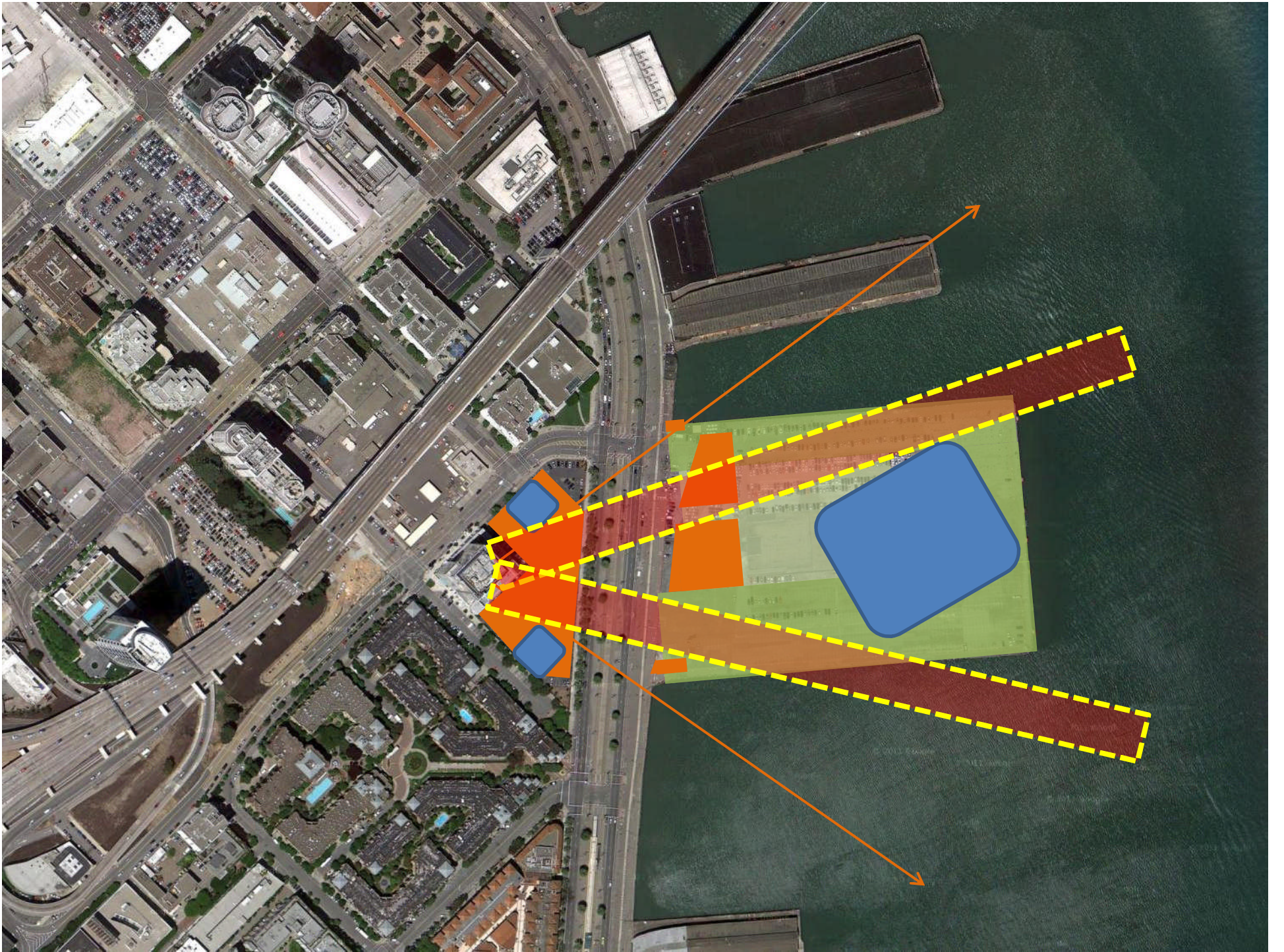


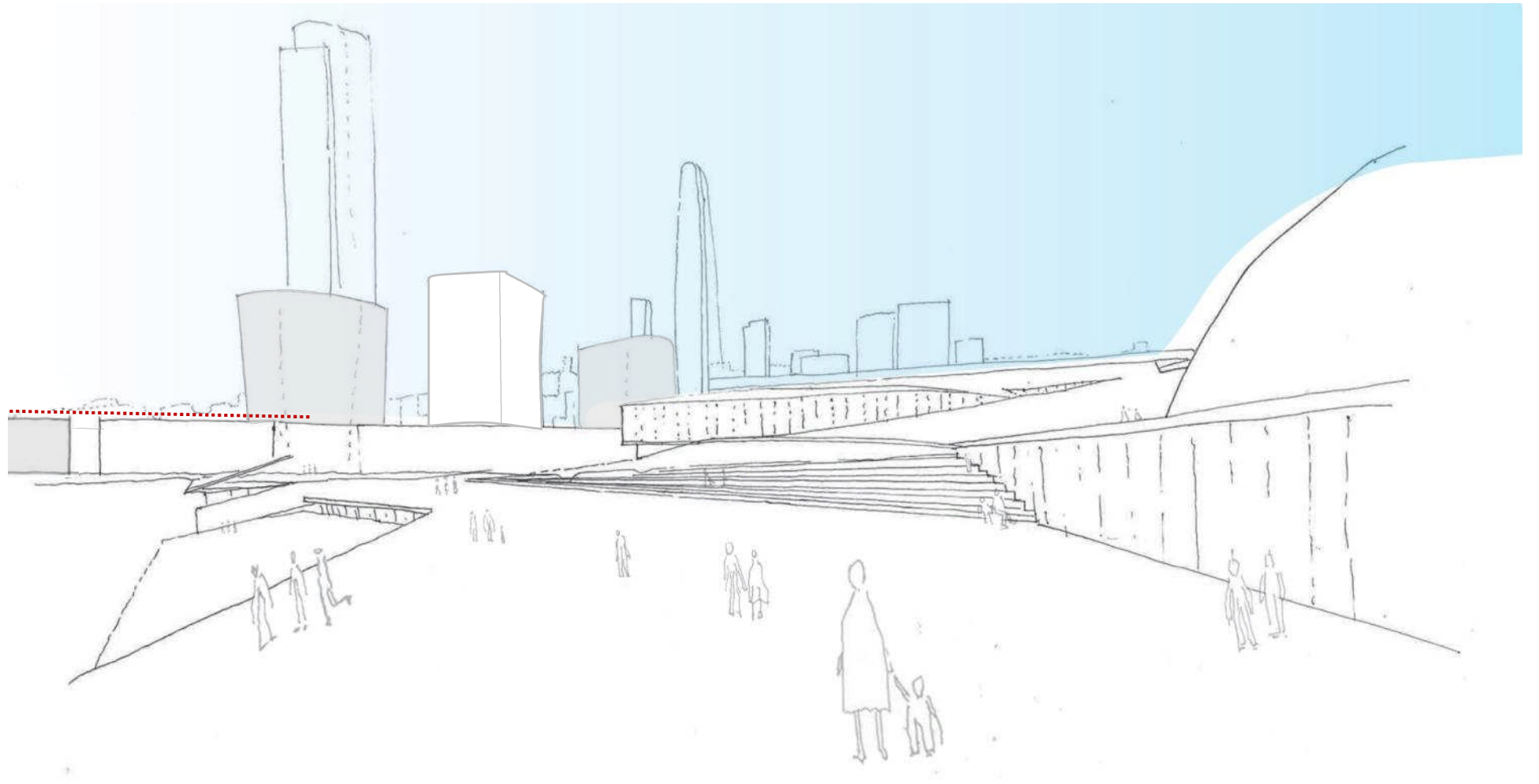
RETAIL		34,500 SF	1 FLR
HOTEL		62,500 SF	10 FLRS
RESIDENTIAL		377,500 SF	4 - 10 FLRS
PARKING		95,000 SF	2 FLRS BELOW GRADE

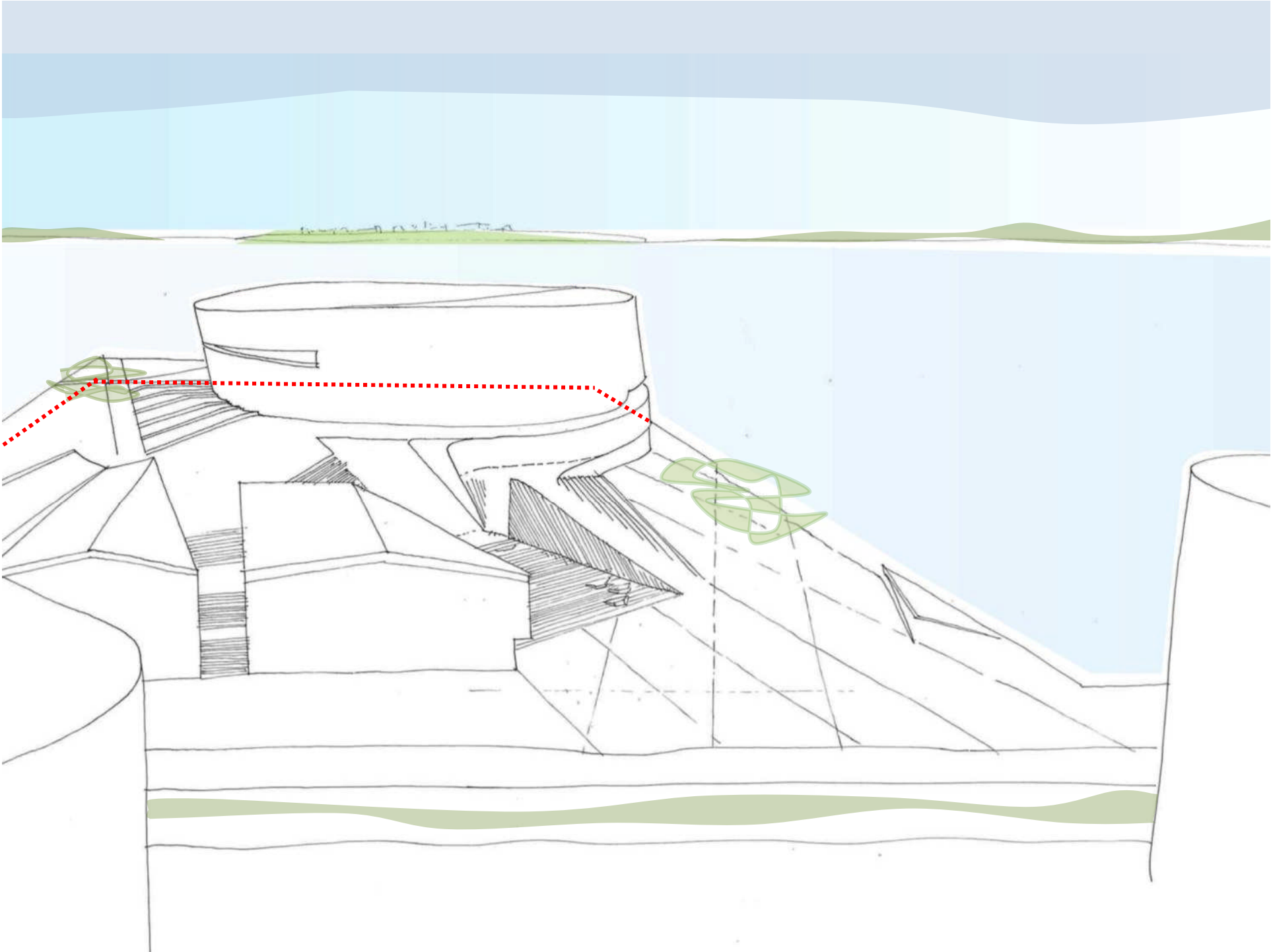


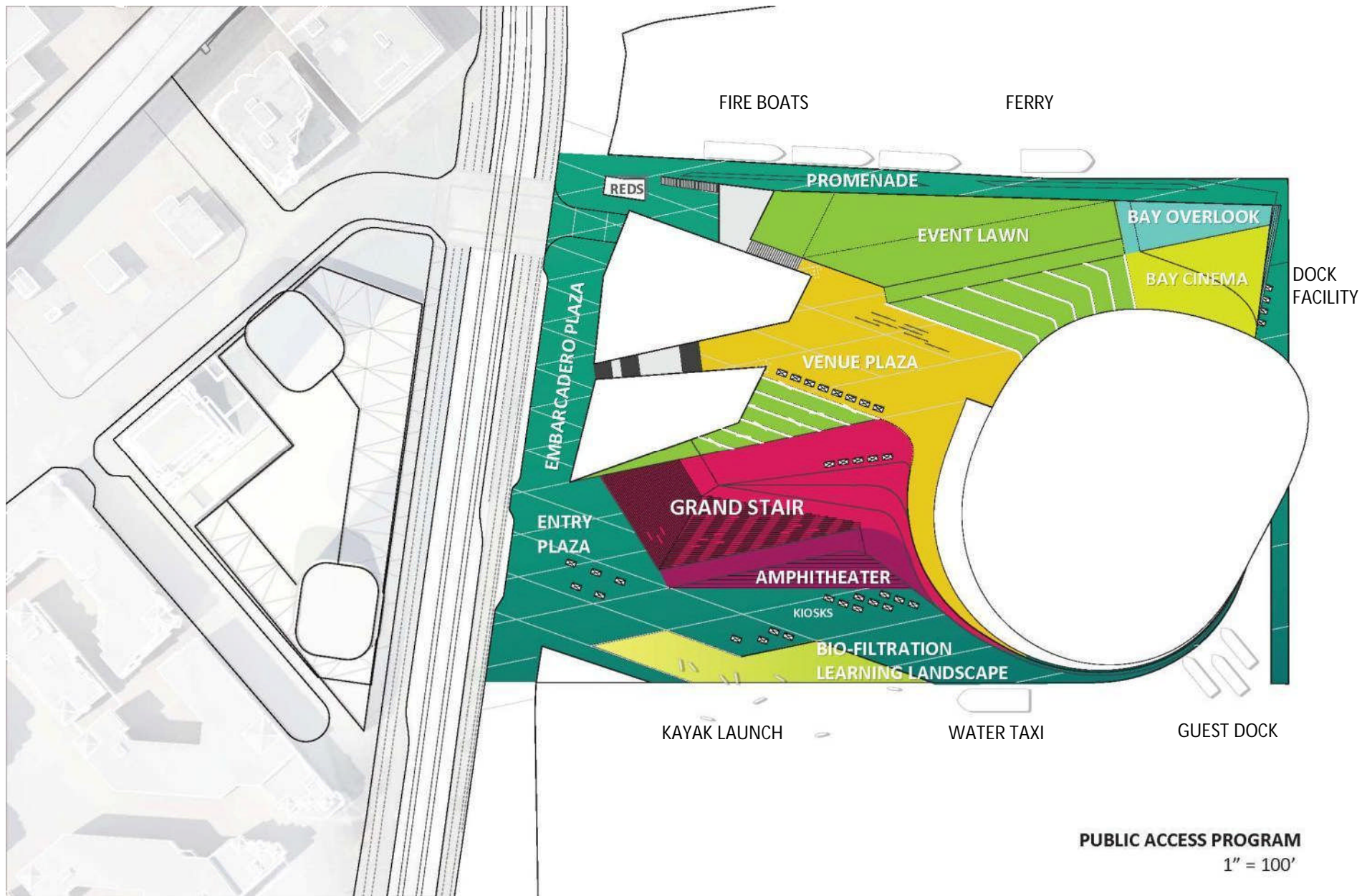
RETAIL	32,300 SF		1 FLR
HOTEL	168,000 SF	224 UNITS @ 450 SF AVG	12 FLRS
RESIDENTIAL	134,520 SF	118 UNITS @ 850 SF AVG	12 FLRS
PARKING	104,000 SF	296 CARS	3 FLRS

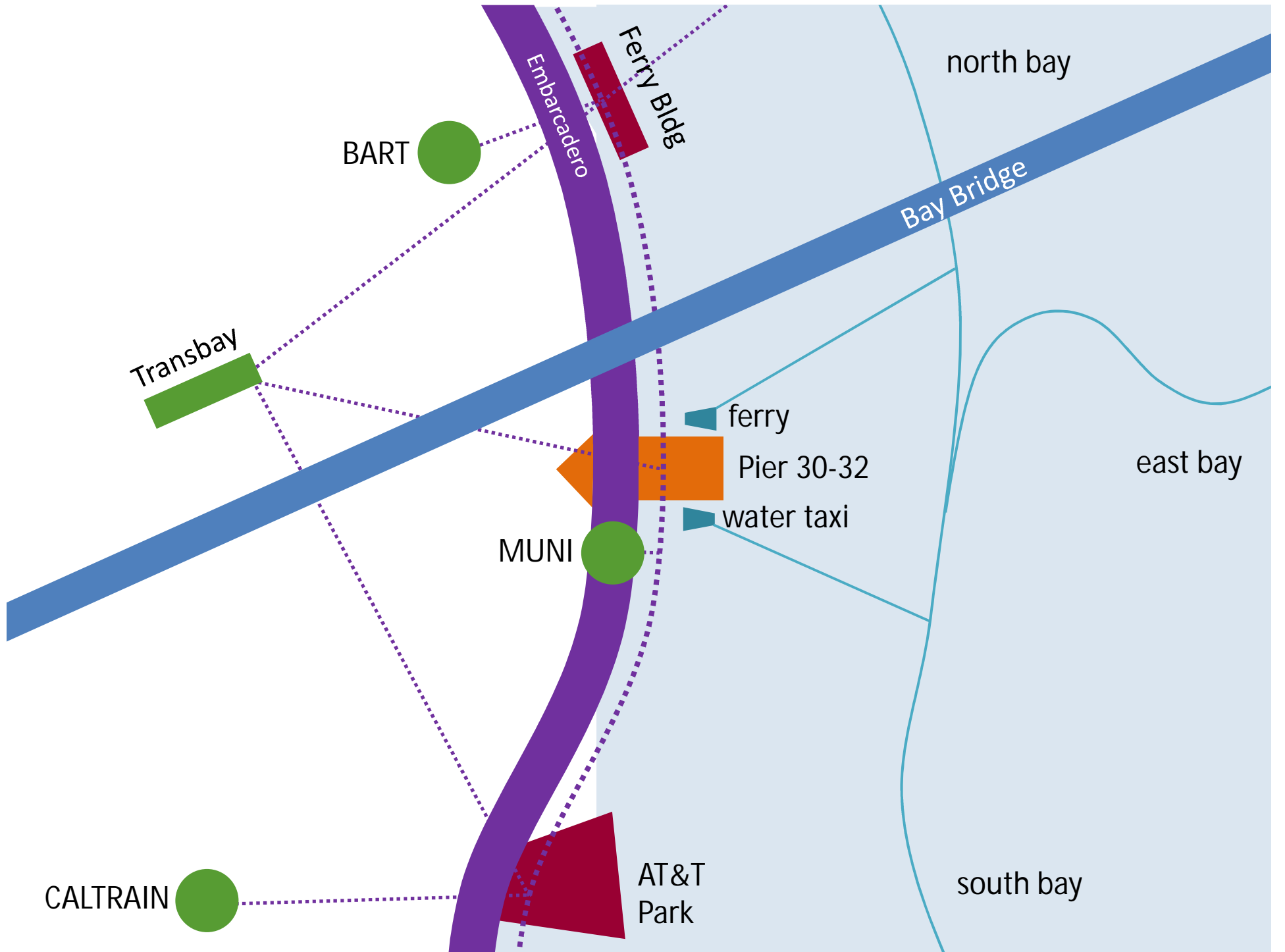


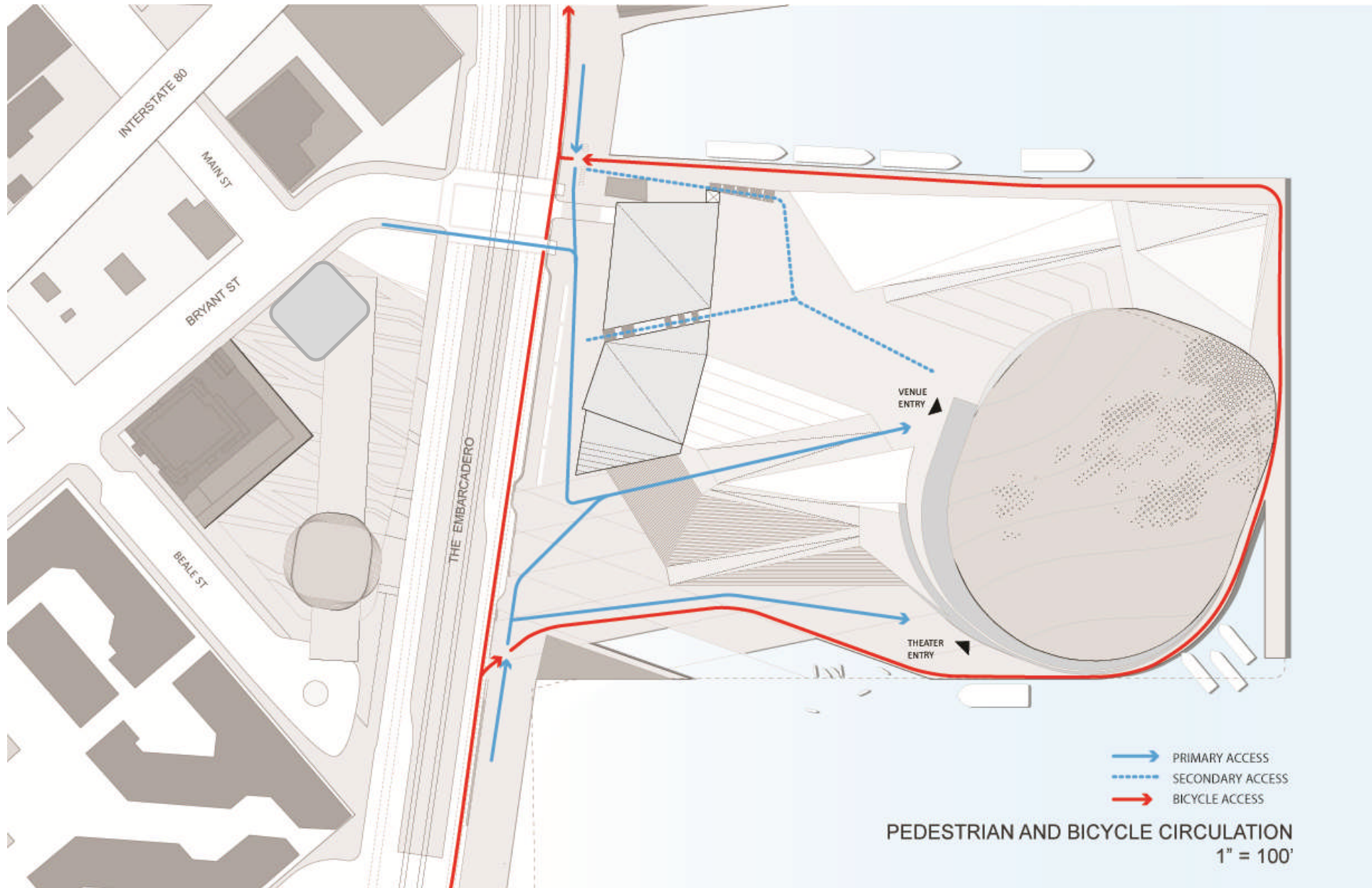


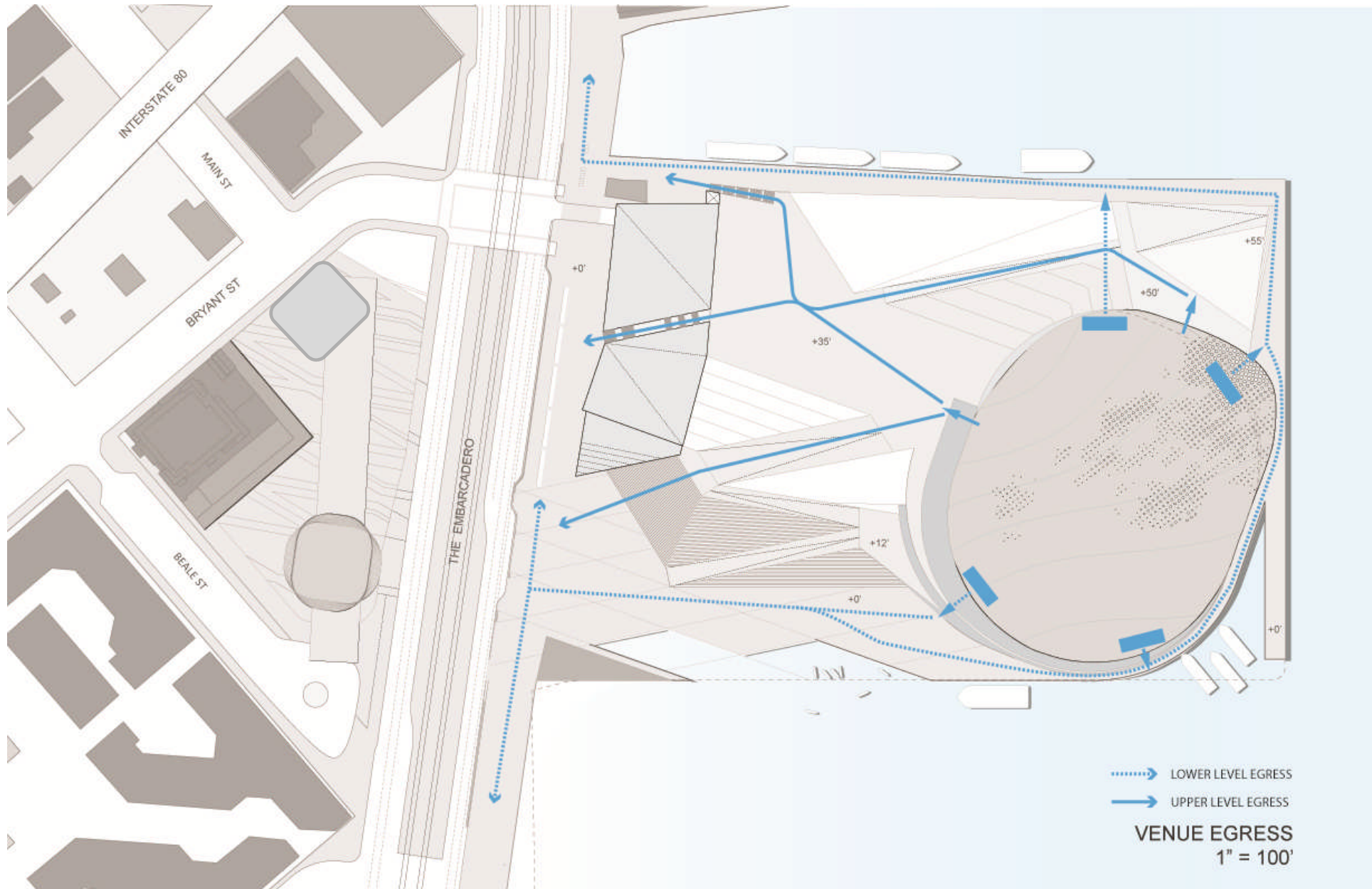


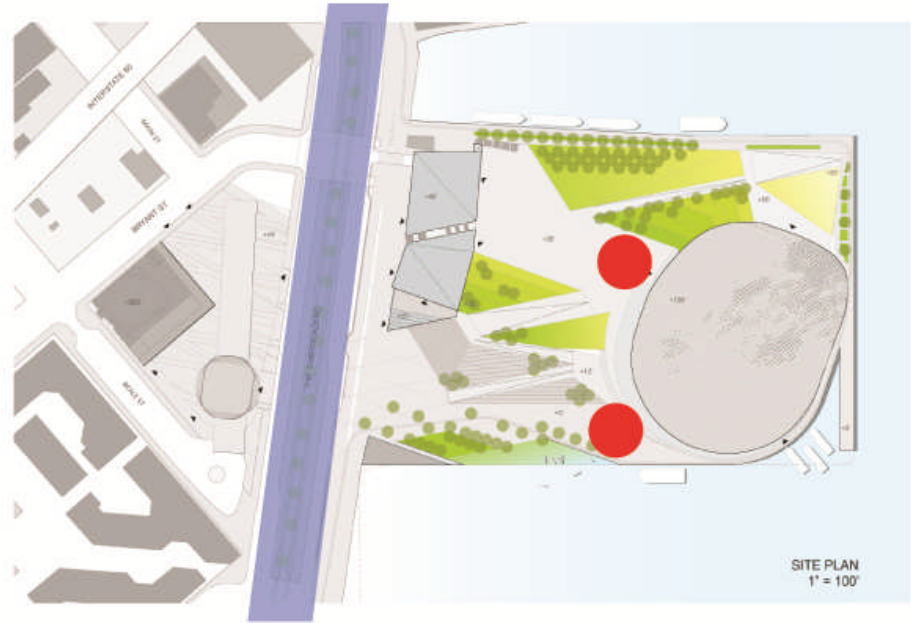


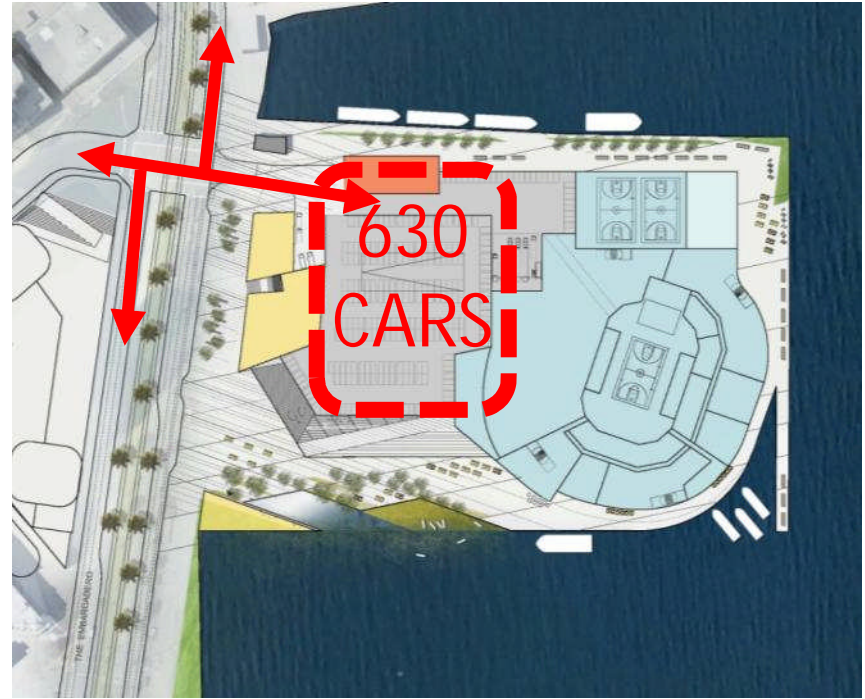


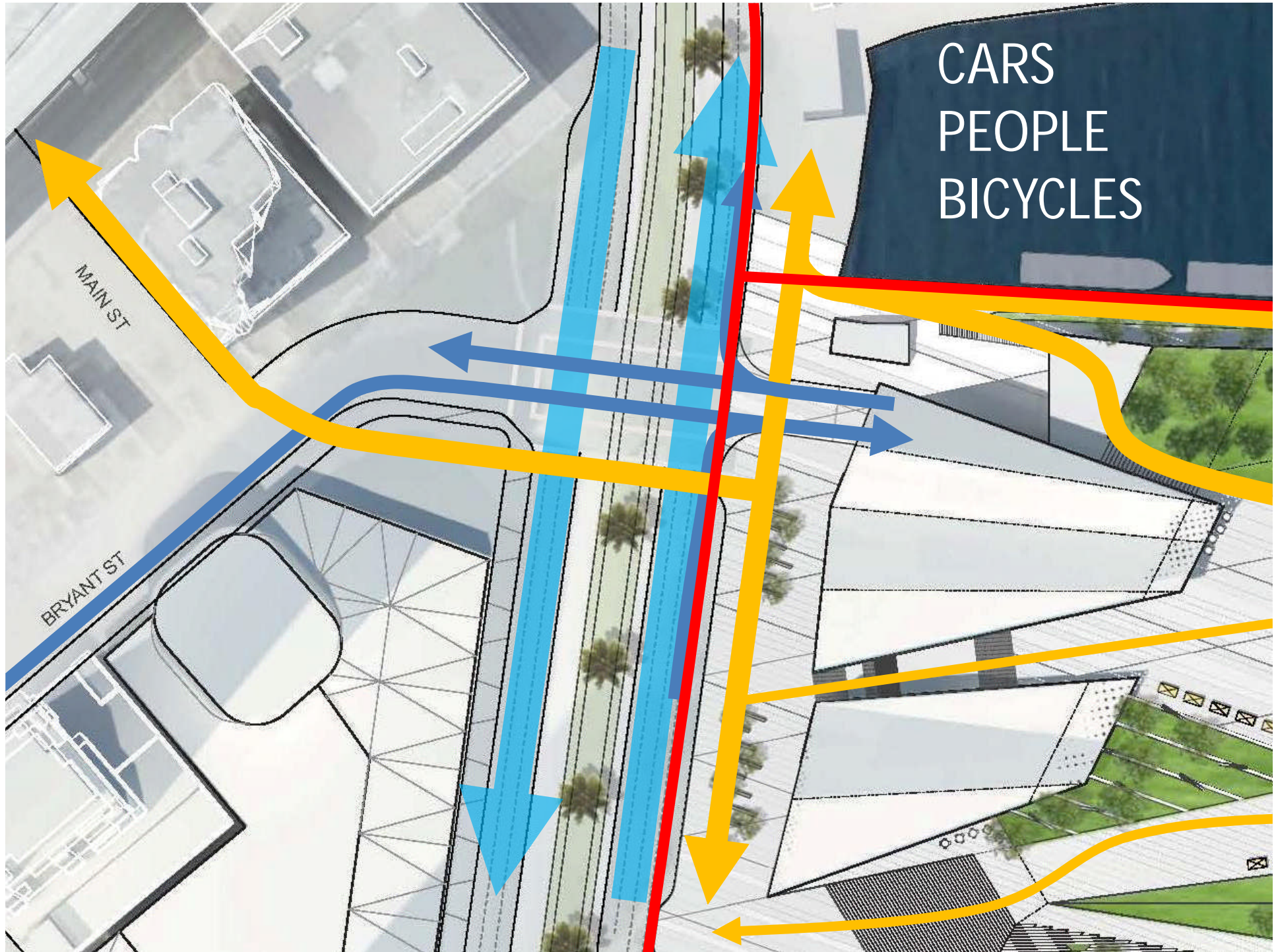














Golden State Warriors

Board of Supervisors
Land Use Committee

19 November 2012