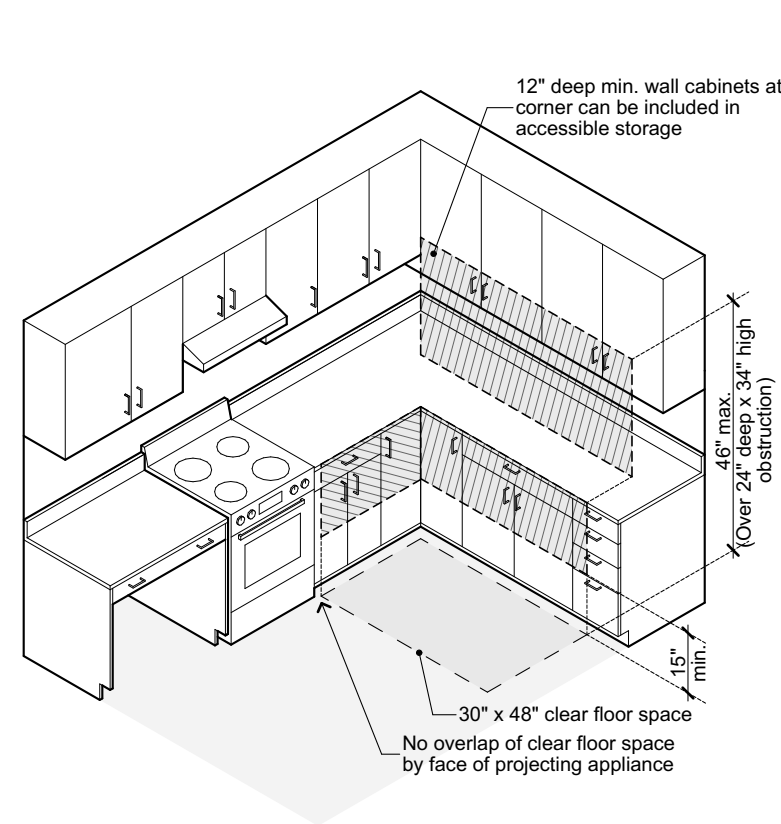
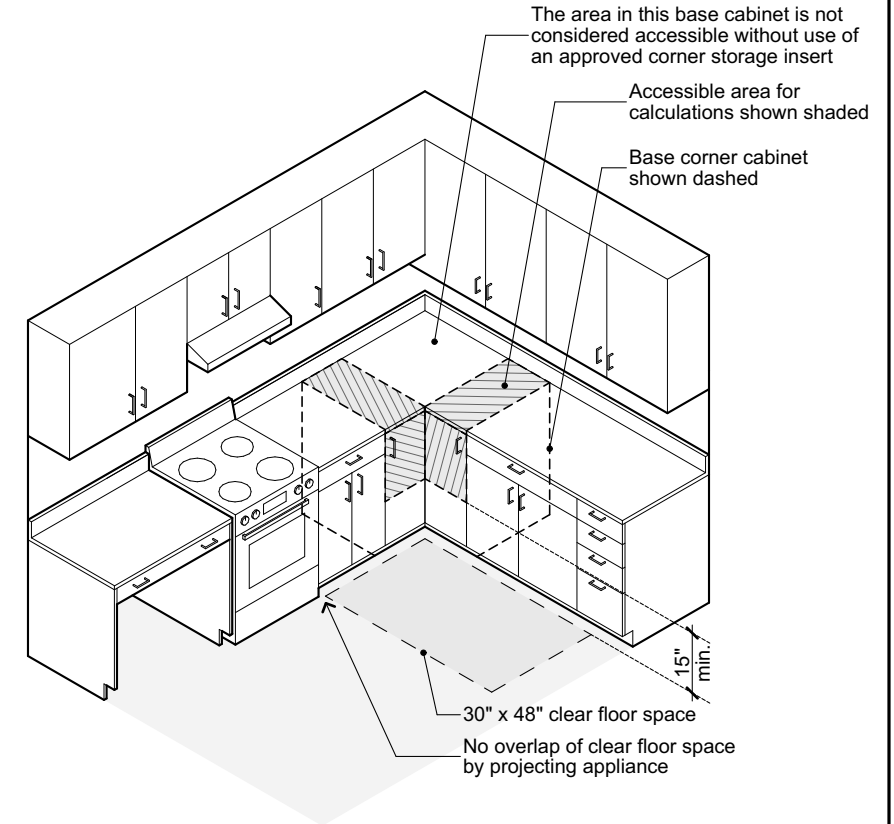


1 Reach Ranges  
02.2



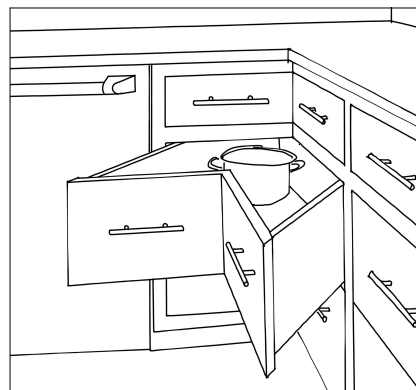
2 Corner Storage Reach  
02.2

**KEY TO SHADING**  
 = Accessible Storage from clear floor space position shown

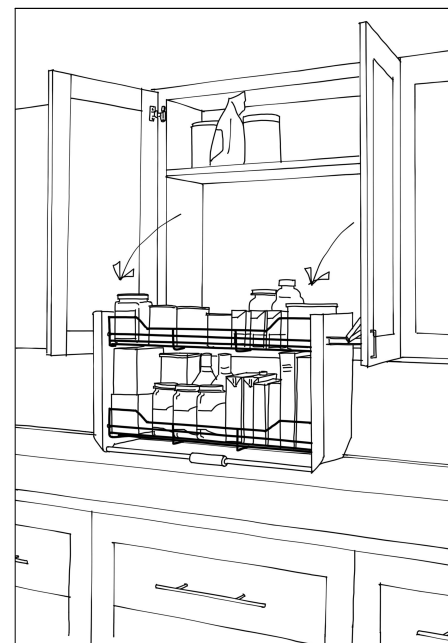
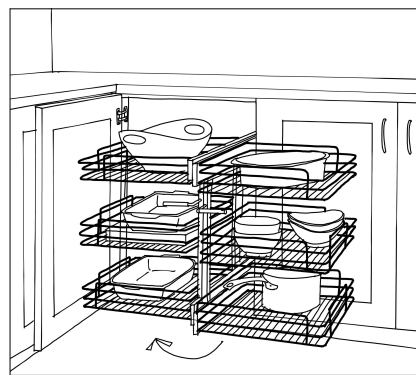


3 Corner Base Storage  
02.2

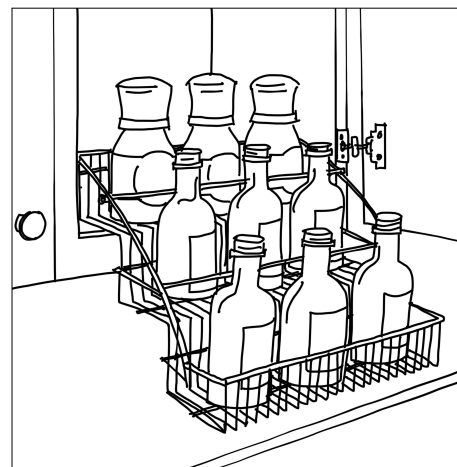
**KEY TO SHADING**  
 Corner storage considered accessible



Corner Storage Examples



Wall Cabinet Storage Examples

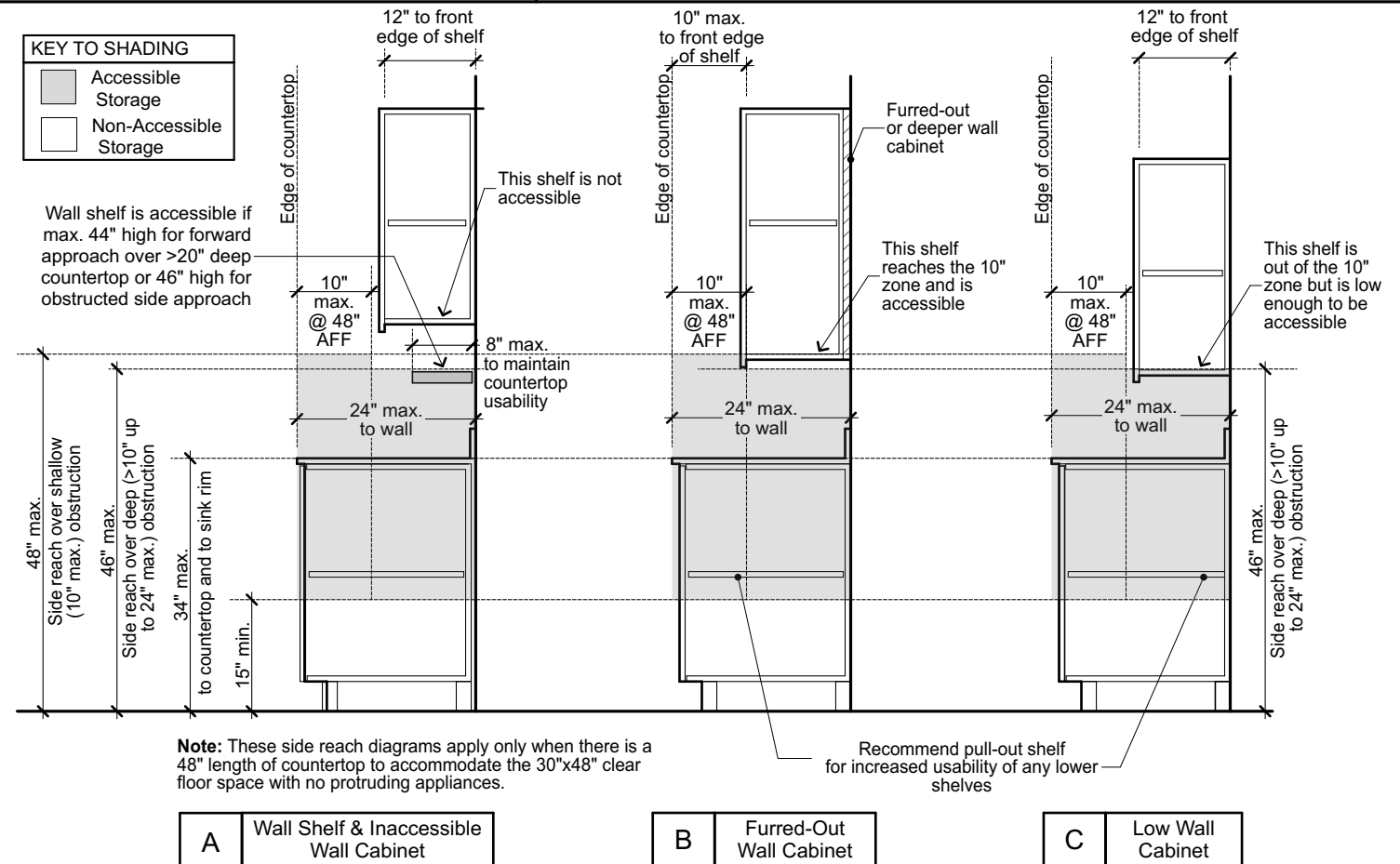


Products like these can make more wall cabinet storage accessible by bringing the contents down to a lower height and forward toward the user.

- Operating part / handle must be mounted within reach range.
- Confirm upper shelf lowers down sufficiently to be included in accessible storage.
- Five pound operating force is measured when empty.
- Operation must not require grasping/twisting.

4 Non-Standard Storage Examples  
02.2

These images and other creative solutions for providing accessible storage are suggestions only - the project designer is responsible for demonstrating that any non-standard solution meets reach and other applicable code requirements.



5 Side Reach Ranges for Cabinets  
02.2