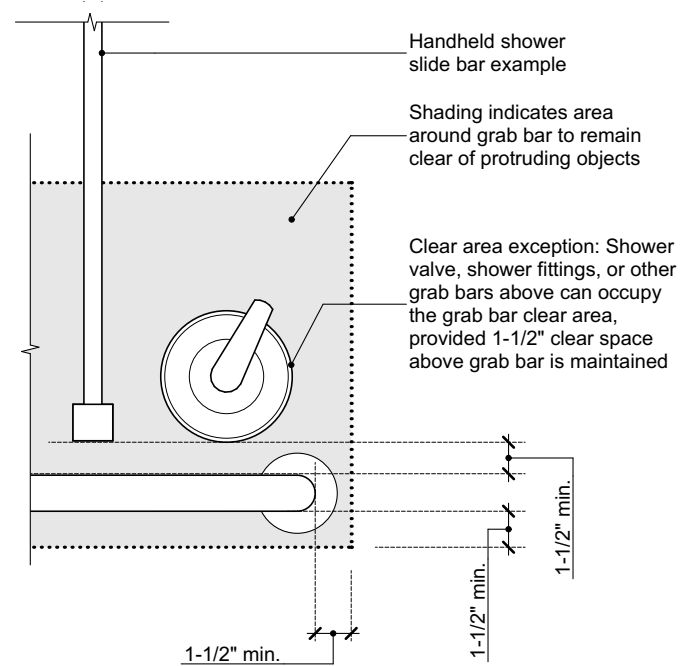
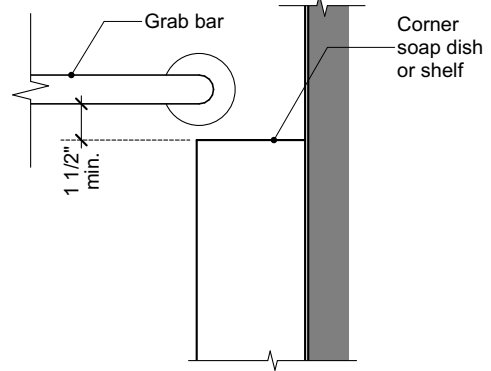


A Grab Bar Clearances

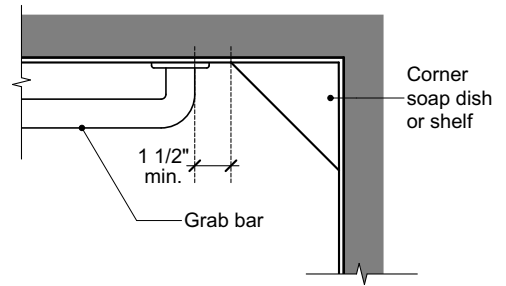


B Grab Bar Clearance Exception

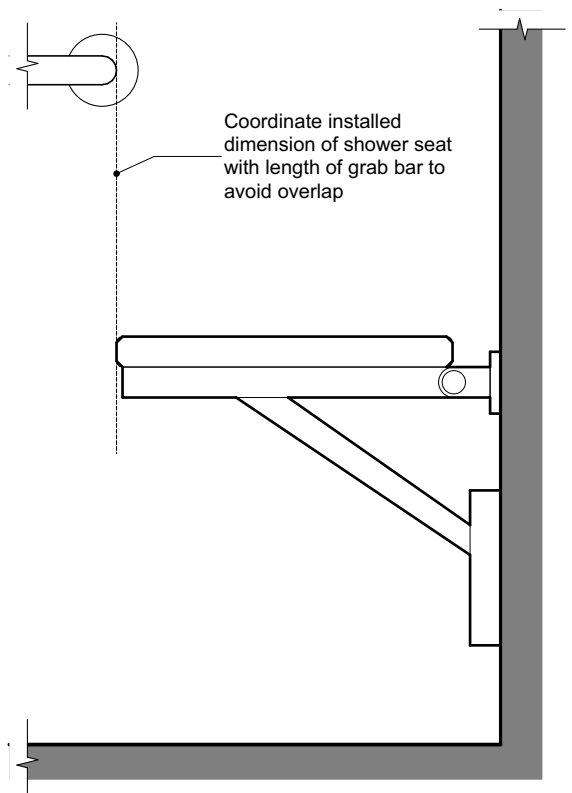
1 Typical Grab Bar Clearances
07.1



2 Bottom Clearance Example
07.1



3 End Clearance Example
07.1



4 Grab Bar Overlap at Shower Seat
07.1

Criteria for Grab Bars and Shower Seats

1. Reinforcement

- A. Drawings shall state: "Allowable stresses shall not be exceeded for materials used when a vertical or horizontal force of 250 pounds is applied at any point on the grab bar, shower seat, fastener, mounting device or supporting structure."
- B. Drawings shall include details showing all wall framing and reinforcement conditions including stud size, gauge, spacing, and fasteners.
- C. The areas of reinforcement are recommended in order to meet code requirements when grab bars are installed. The recommended dimensions allow for construction errors often cited during field inspections and are beneficial to the speed and efficiency of inspections.
- D. Reinforcement is to continue to the next stud past the minimum dimensions shown in this bulletin.

2. Plumbing Clearance

- A. Drawings shall state: "A minimum clearance of 1 inch is required between reinforcement and plumbing. Exception: Clearance is not required at areas where 1-1/2 inch wood blocking is installed."
- B. The 1 inch requirement between reinforcement and plumbing may be waived where it can be demonstrated that the in-wall plumbing will not interfere with the installation of a grab bar. Waivers will be reviewed on a case-by-case basis subject to field inspection.

3. Prefabricated Tub or Shower Surrounds

- A. In-wall reinforcement is required even when a prefabricated tub or shower surround with integral reinforcement is installed.
- B. Prefabricated tub or shower enclosure assemblies with integral reinforcement or preinstalled grab bars may be approved for use if the manufacturer provides testing data from an approved testing or listing agency documenting that the integral reinforcement is designed to resist a single concentrated load of 250 pounds applied in any direction at any point when a grab bar or seat is attached to the assembly. Grab bar and seat attachment details such as minimum fastener type and dimension shall be shown on the plans.

Mayor's Office on Disability



Information Bulletin MOD-07

Subject	Reinforcement and Clearances for Grab Bars and Shower Seats in Residential Dwelling Units
---------	---

References	
	<ul style="list-style-type: none"> • 2019 California Building Code (CBC) • Fair Housing Act Design Manual (FHADM) • Uniform Federal Accessibility Standards (UFAS) • 2010 ADA Standards (ADAS)

Purpose	
	<p>This bulletin provides guidance for the design of reinforcement for grab bars and shower seats and for the required clearances around grab bars.</p> <p>Note: This bulletin combines CBC Chapter 11A reinforcing with CBC Chapter 11B Grab bar locations, as well as MOD recommendations.</p>

For more information visit the Mayor's Office on Disability (MOD) website: sfgov.org/mod

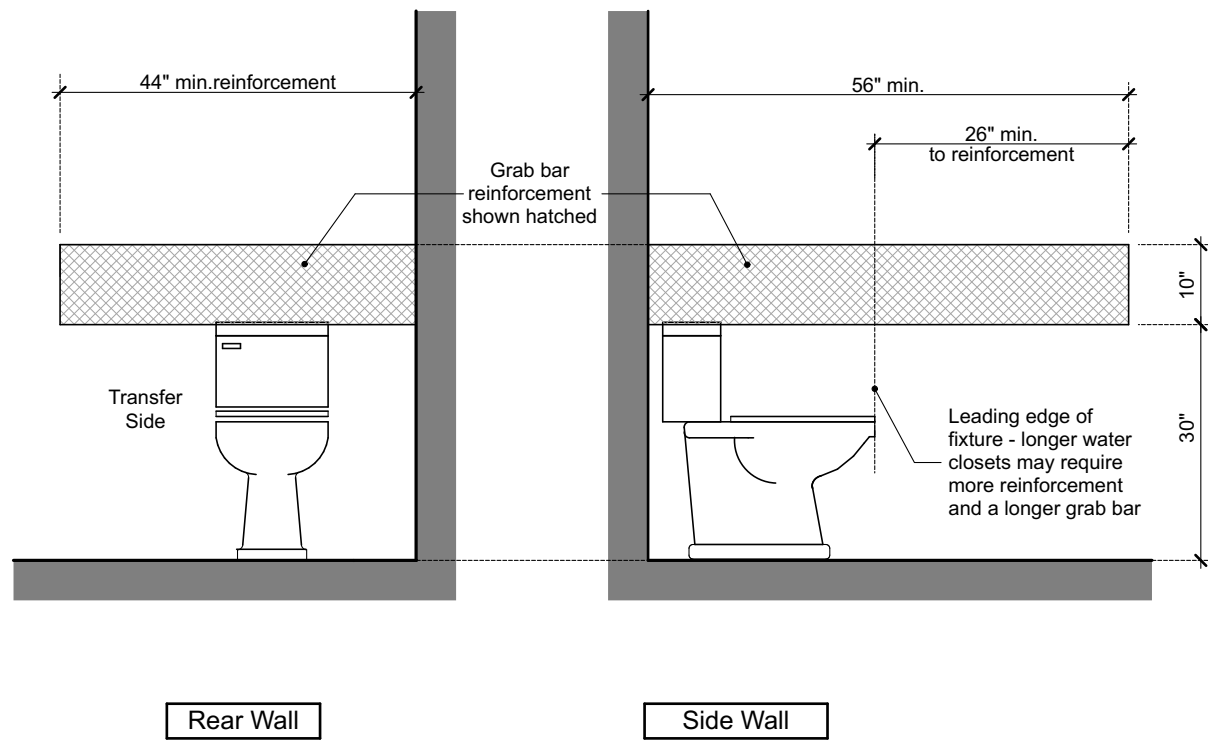
CBC Code Section	Summary
1127A.4	Grab bar, tub and shower seats, fasteners, and mounting devices.
1134A.3	Required grab bars at powder rooms.
1134A.5 Item 2	Grab bar reinforcement at bathtubs.
1134A.6 Item 4	Grab bar reinforcement at showers.
1134A.7 Item 2	Grab bar reinforcement at water closets.
11B-604.3.2	Overlap of water closet clearance.
11B-604.5	Toilet grab bars.
11B-607.4	Bathtub grab bars.
11B-608.3	Shower compartment grab bars.
11B-609	Grab bar detailed requirements and structural strength.
11B-610	Bathtub and shower seat detailed requirements and structural strength.
1607.8.2	Grab bars, shower seats, and affixed benches.

FHADM Section	Summary
Part Two: Ch. 6	Reinforcement in bathroom walls for future grab bars.
Part Two: Ch.7, Part B Pgs. 7.33-7.38	Bathroom Design.
Part Two: Ch. 6	Reinforcements.

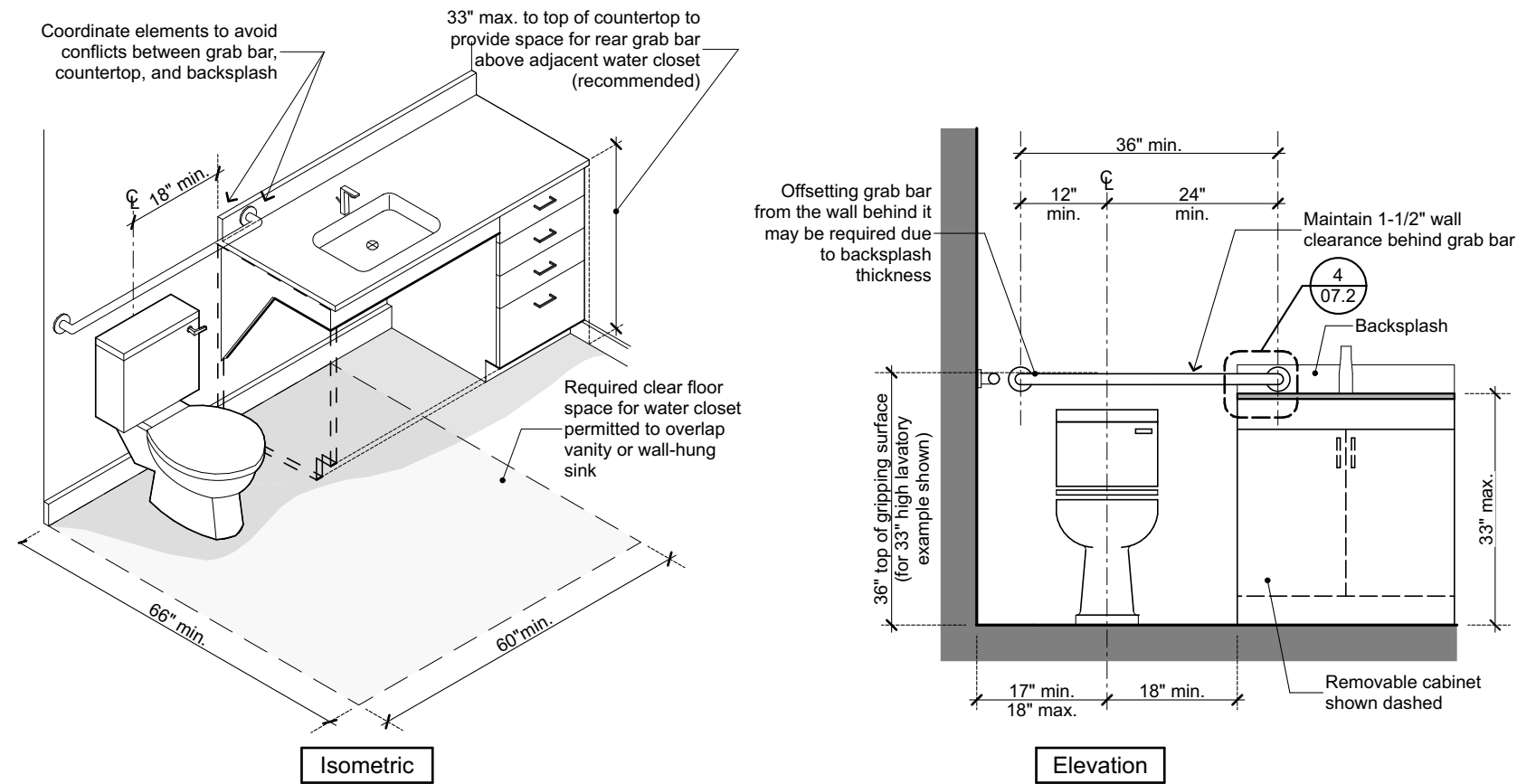
UFAS Section	Summary
Section 4.26	Configuration of grab bars and tub and shower seats.
Section 4.26.3	Structural strength.

Residential Dwelling Unit Terminology	
Mobility Unit:	Residential dwelling unit per 11B-233.3.1.1 providing mobility features complying with Sections 11B-809.2 through 11B-809.4.
Adaptable Unit:	Residential dwelling unit per 11B-233.3.1.2, providing adaptable accessibility features as required by Sections 11B-233.3.1.2.1 through 11B-233.3.1.2.6.
Communication Unit:	Residential dwelling unit per 11B-233.3.1.3, providing communication features complying with Section 11B-809.5.

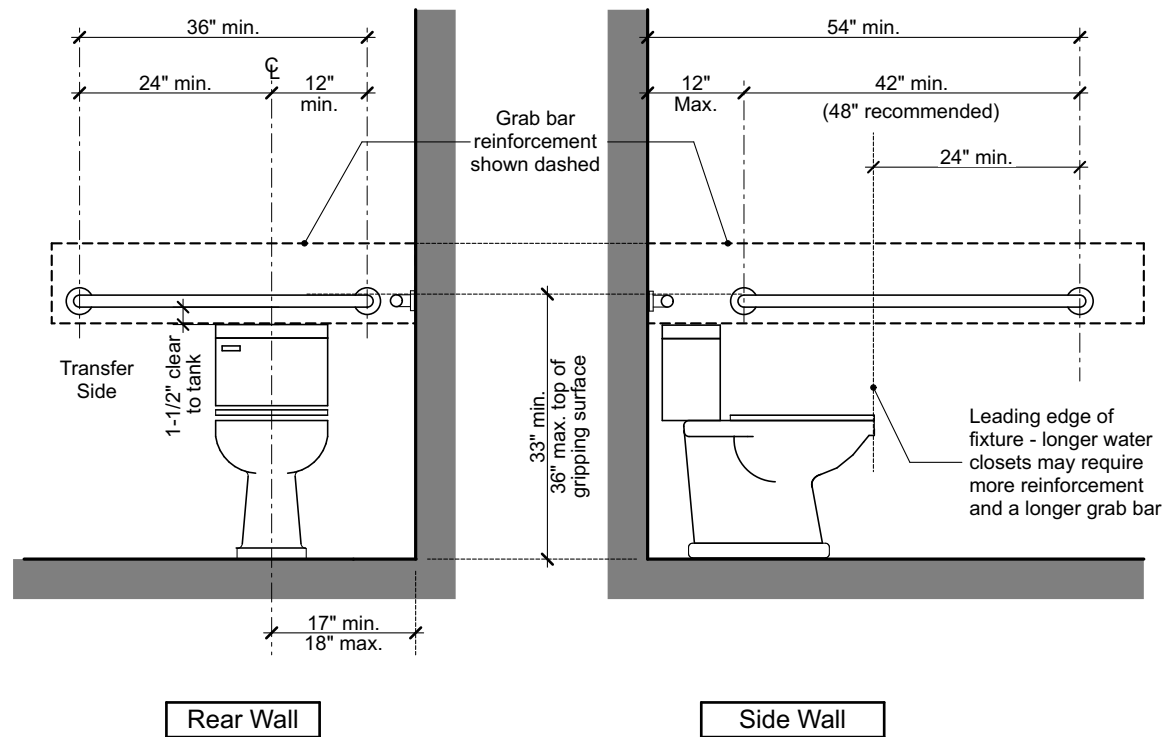
Not to Scale	Issue Date: 10/9/20	Information Bulletin: MOD-07
Full size printing: 11x17	Revision Date: —/—/—	Sheet #: 07.1 (1 of 6)



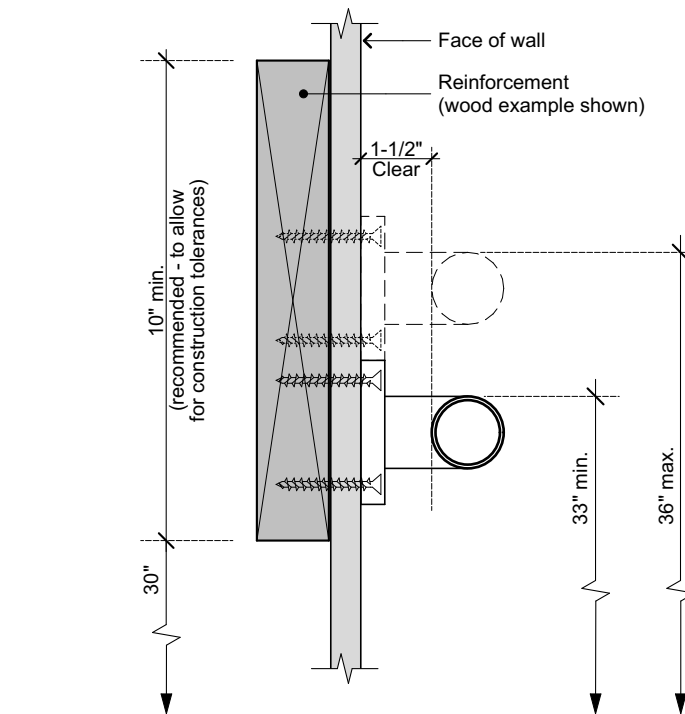
1 Permanent In-Wall Reinforcement at Water Closets
07.2



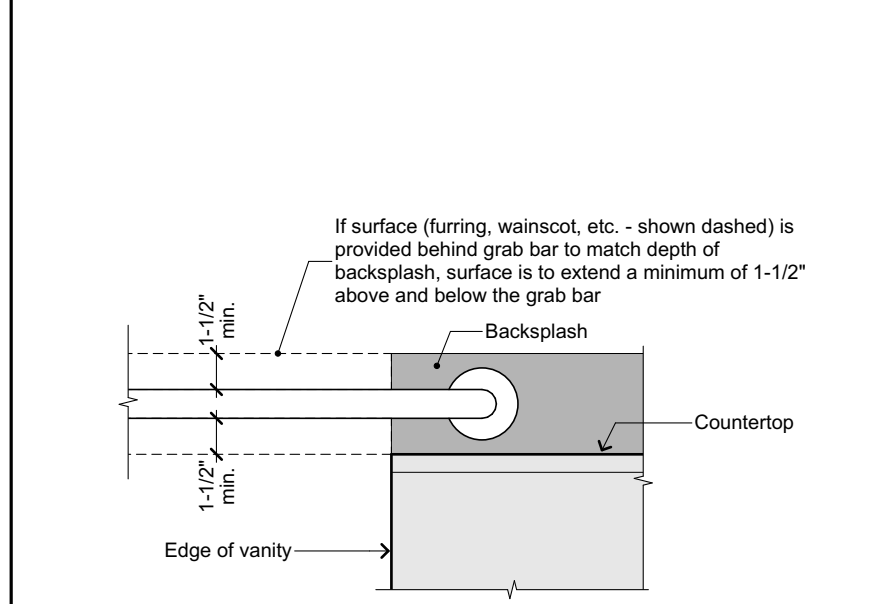
2 Grab Bar Overlap at Lavatory - Dwelling Unit Exception
07.2



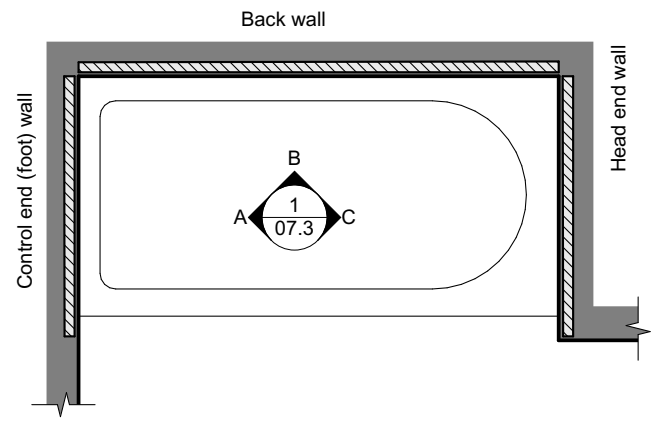
3 Grab Bars at Water Closets
07.2



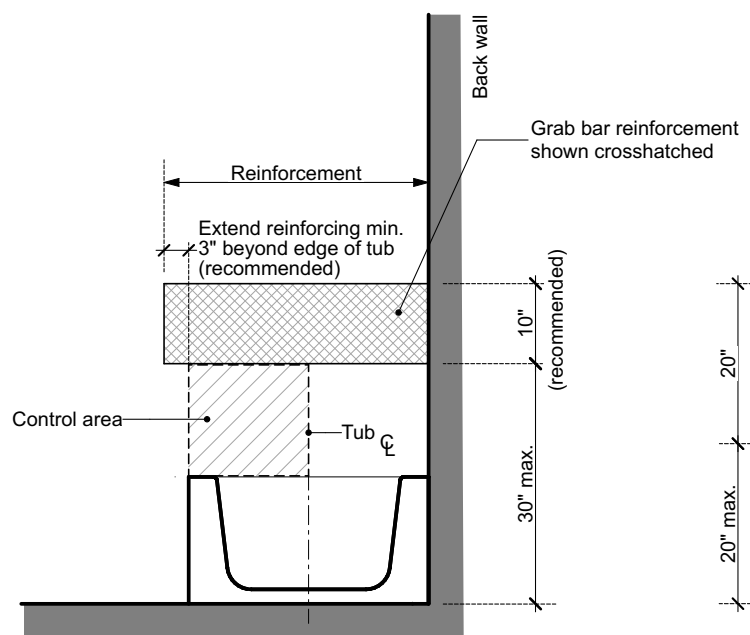
4 Reinforcement at Water Closet
07.2



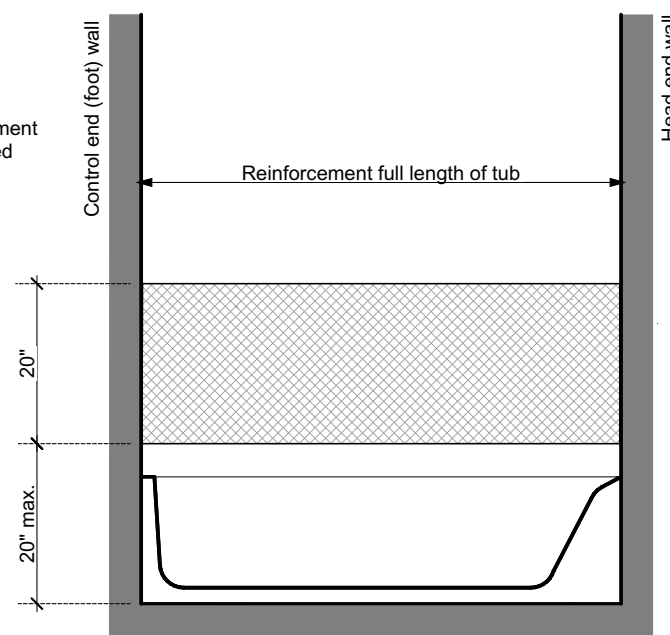
5 Grab Bar Clearances at Backsplash - Example
07.2



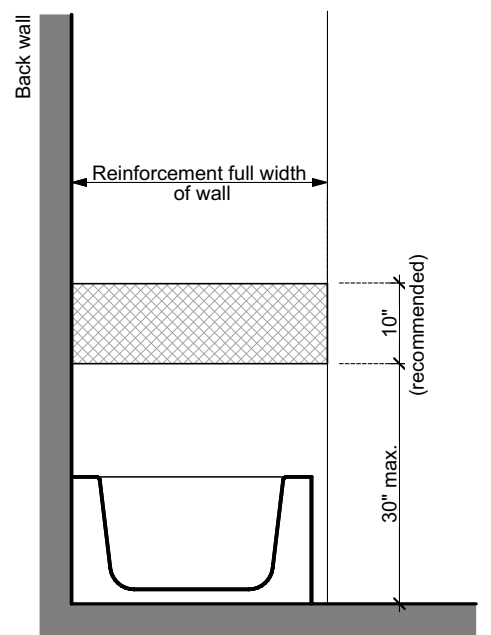
Reinforcement Plan View



A Control End (Foot) Wall - Mobility Unit

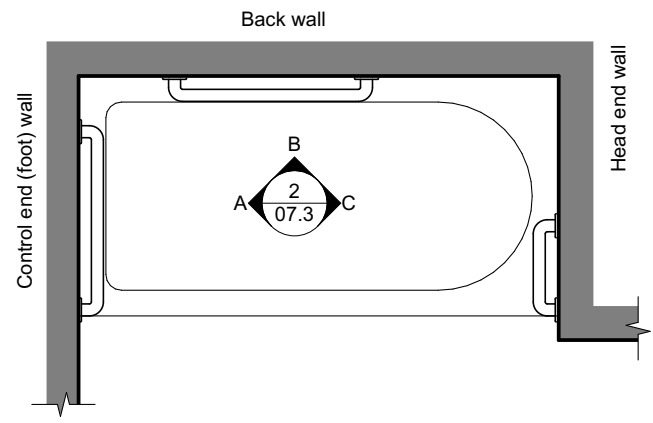


B Back Wall

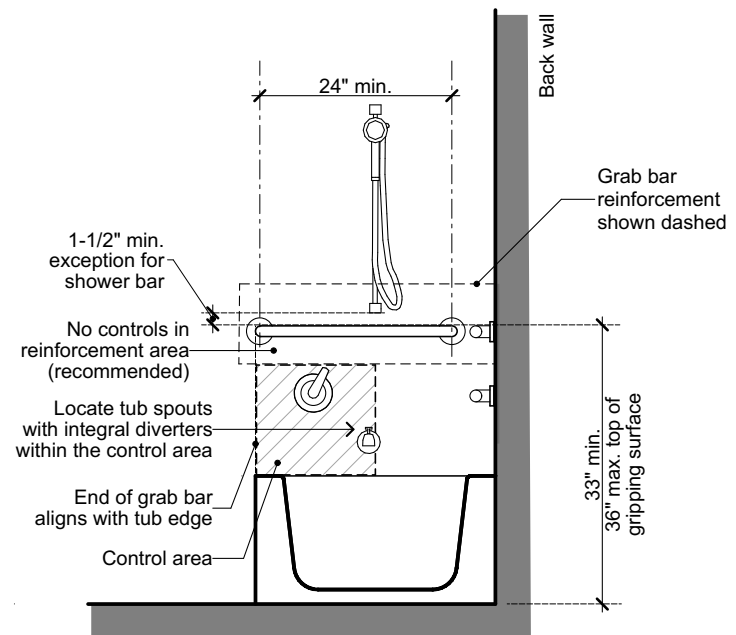


C Head End Wall

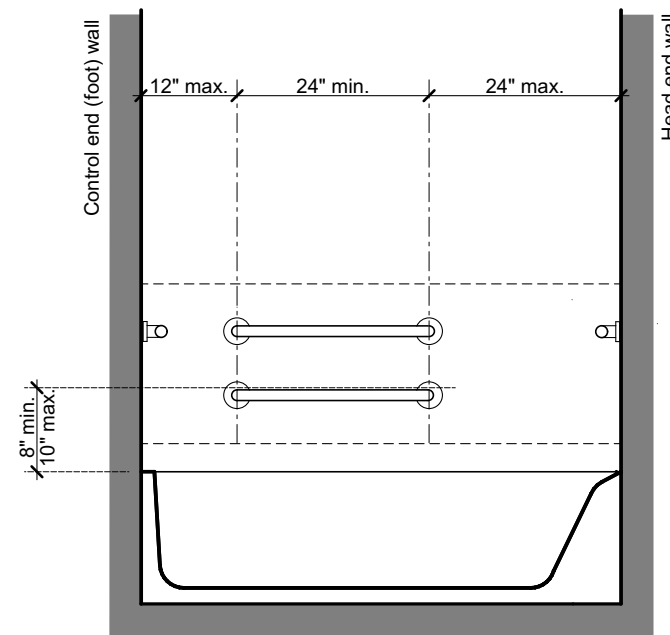
1 Reinforcement at Tub with Removable Seat
07.3



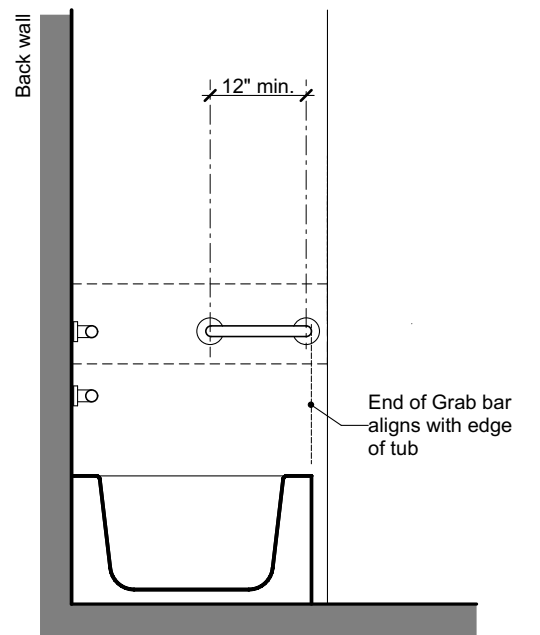
Grab Bar Plan View



A Control End (Foot) Wall - Mobility Unit

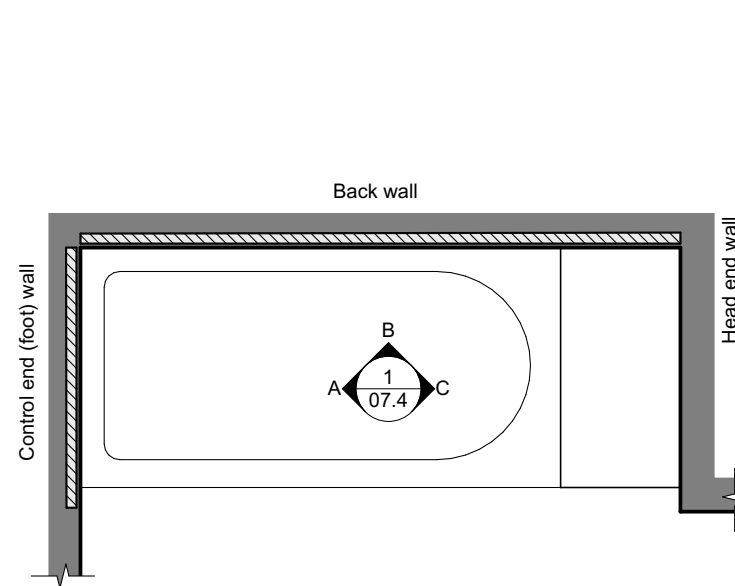


B Back Wall

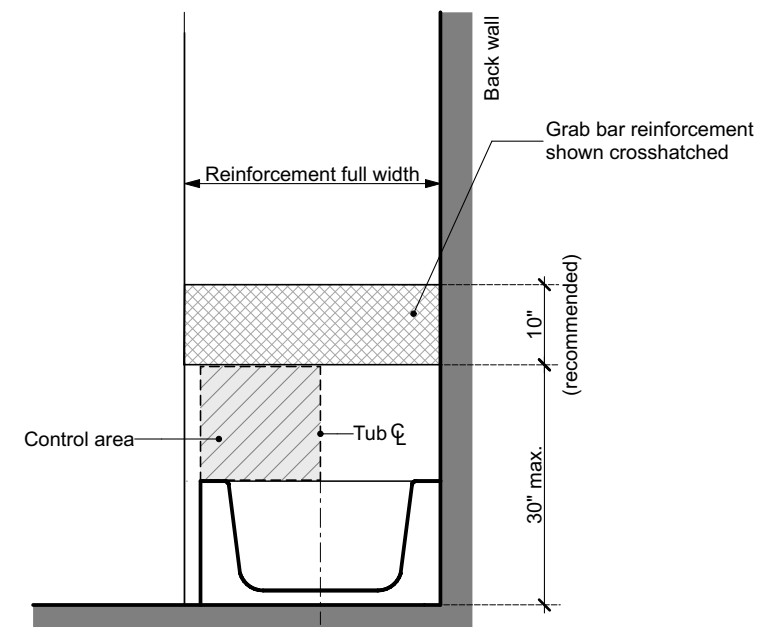


C Head End Wall

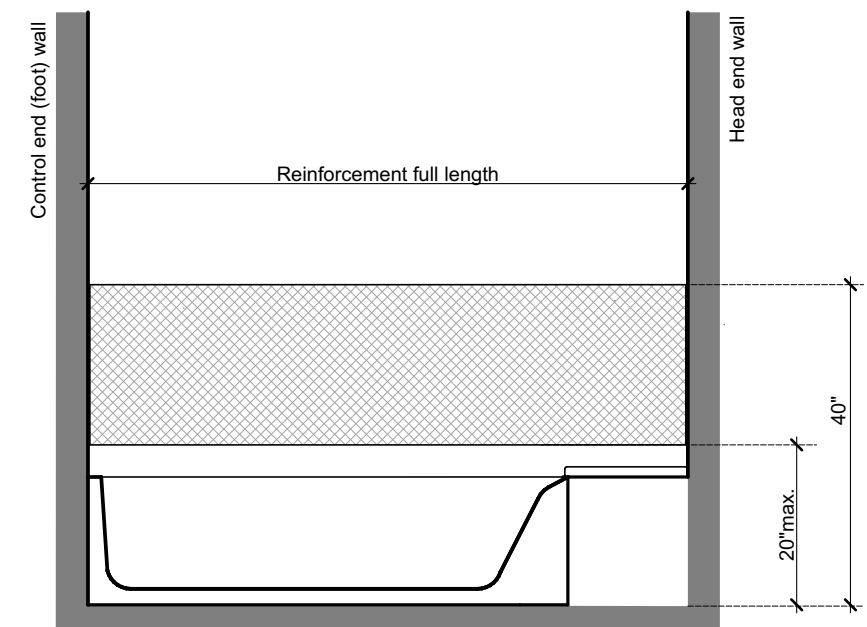
2 Grab Bars at Tub with Removable Seat
07.3



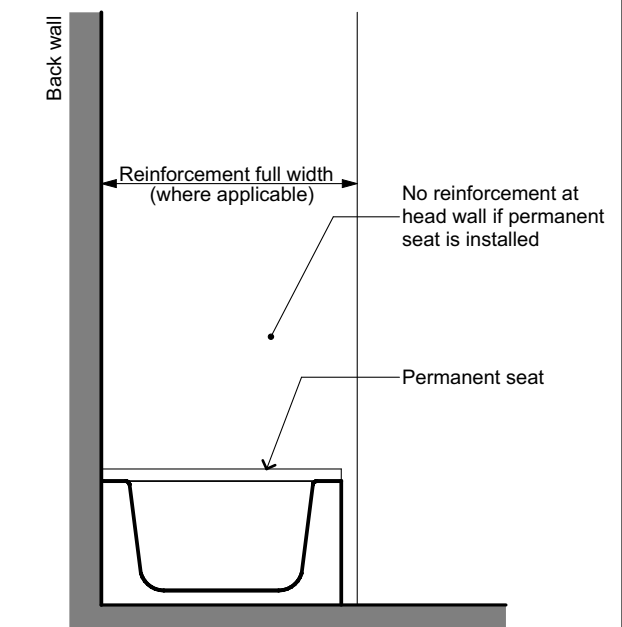
Reinforcement Plan View



A Control End (Foot) Wall - Mobility Unit

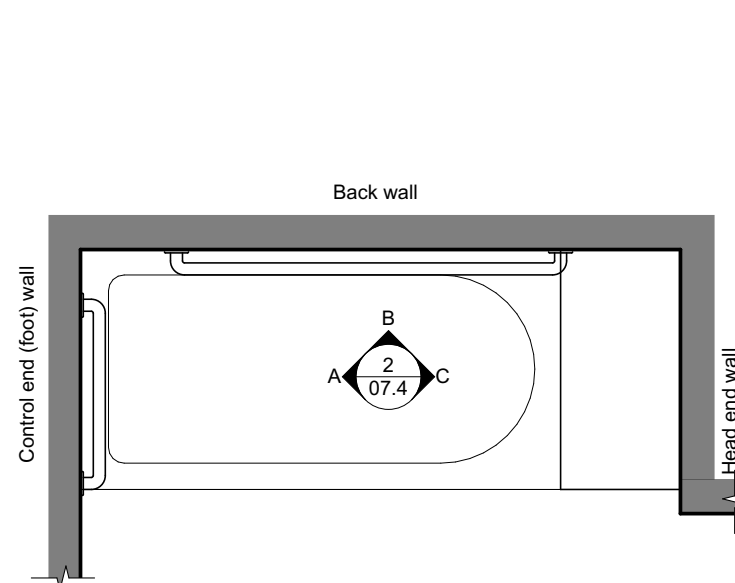


B Back Wall

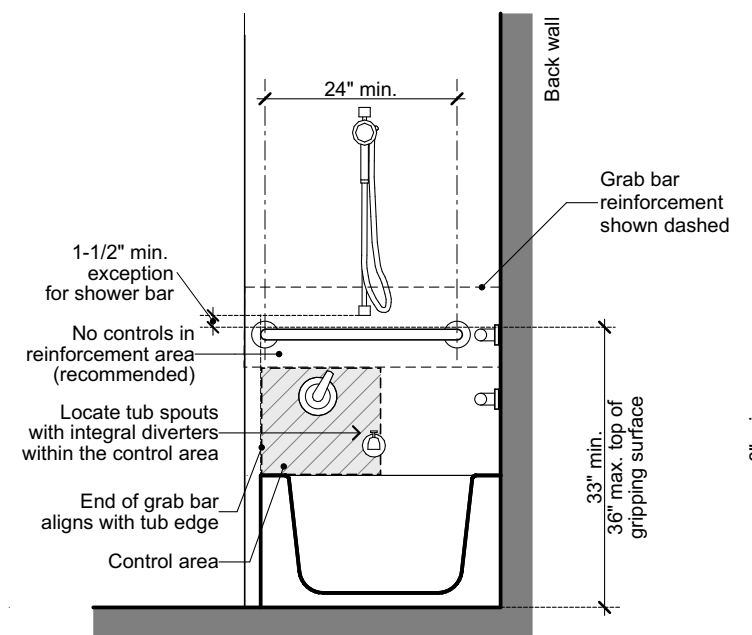


C Head End Wall

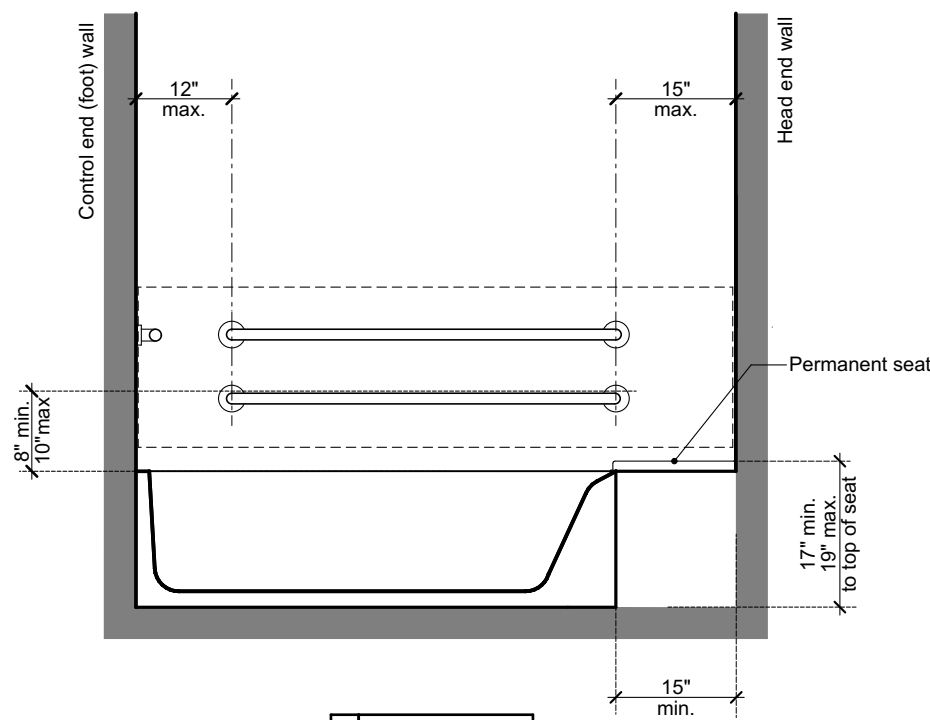
1 Reinforcement at Tub with Permanent Seat
07.4



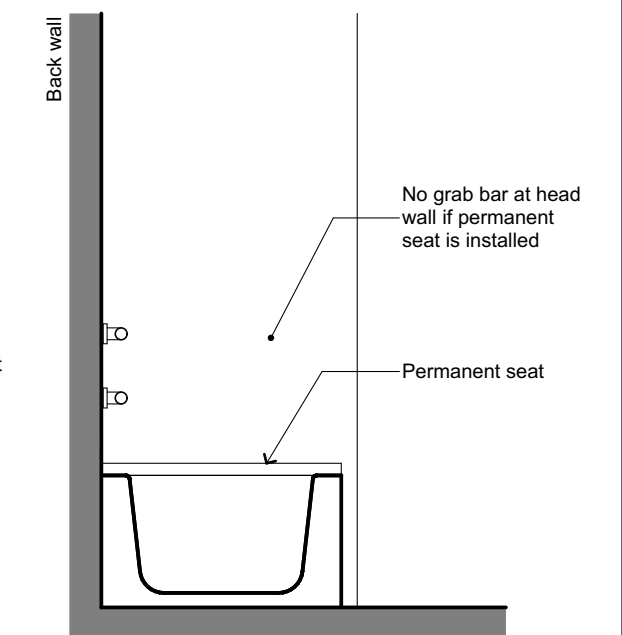
Grab Bar Plan View



A Control End (Foot) Wall - Mobility Unit

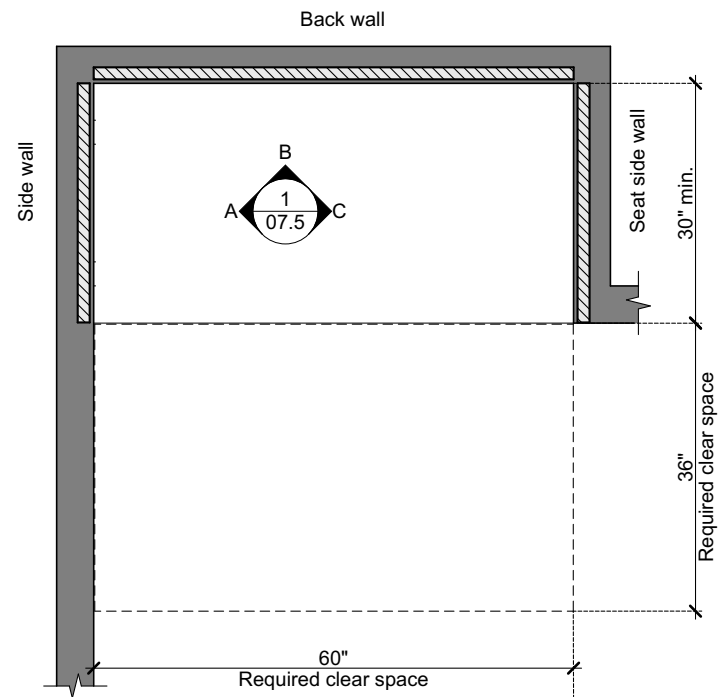


B Back Wall

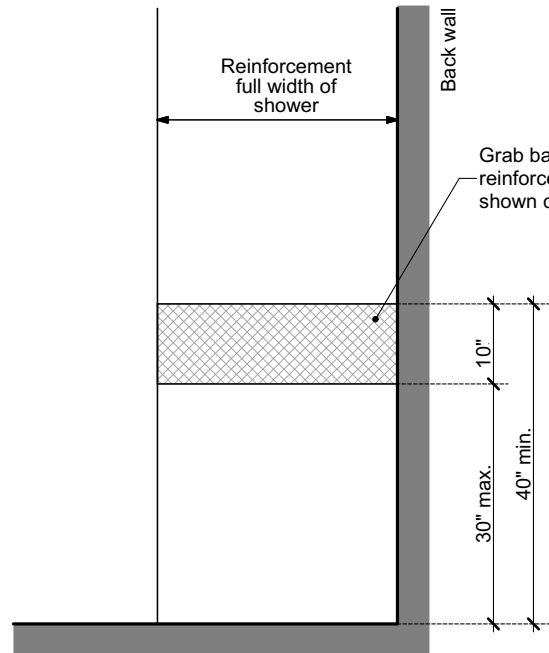


C Head End Wall

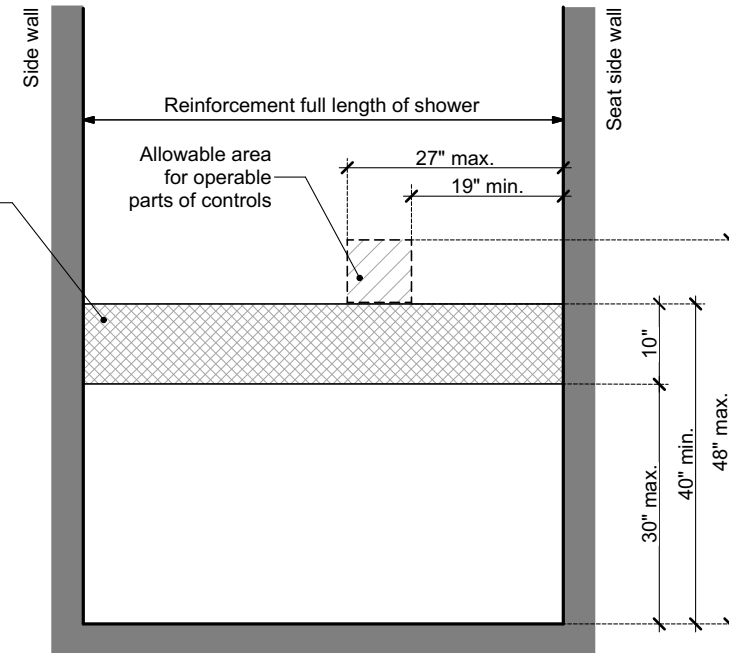
2 Grab Bars at Tub with Permanent Seat
07.4



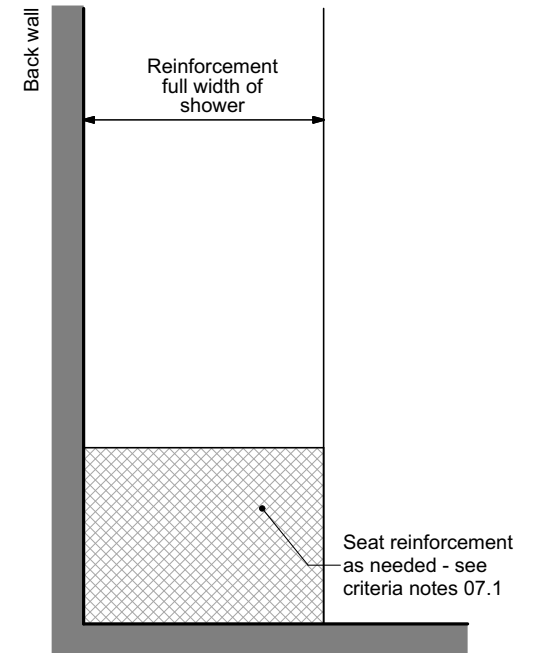
Reinforcement Plan View



A Side Wall

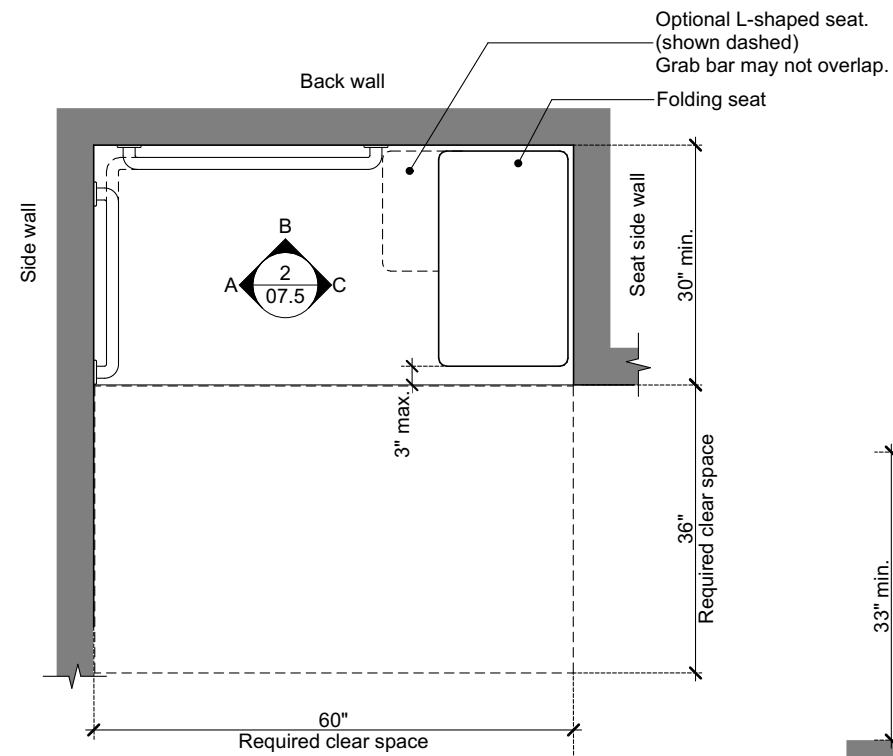


B Back Wall

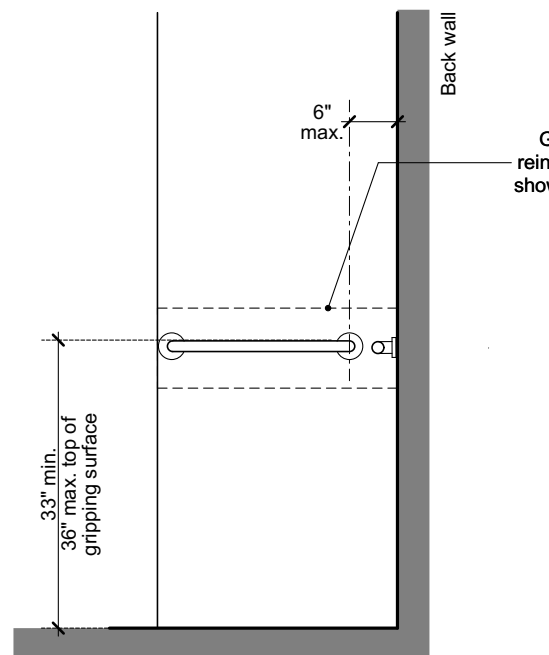


C Seat Side Wall

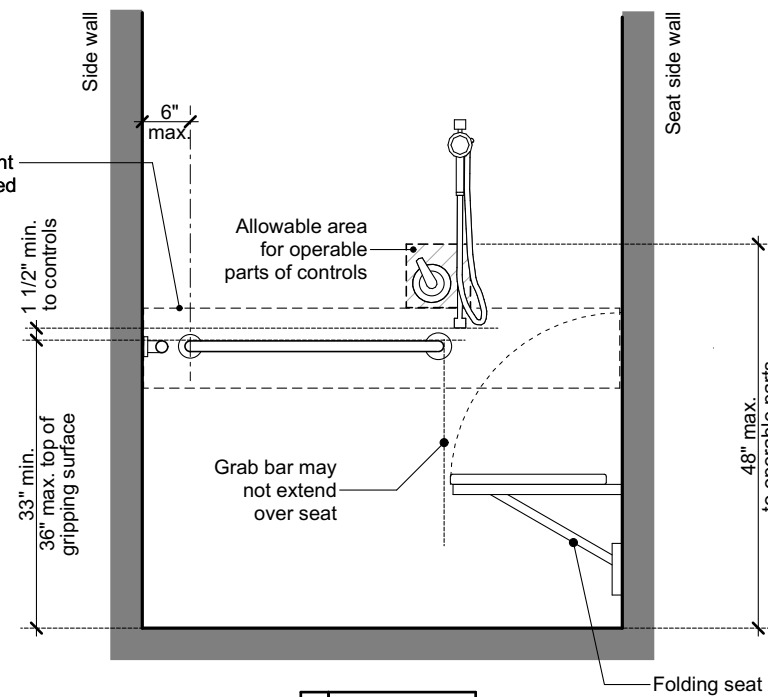
1 Reinforcement at Standard Roll-In Type Shower
07.5



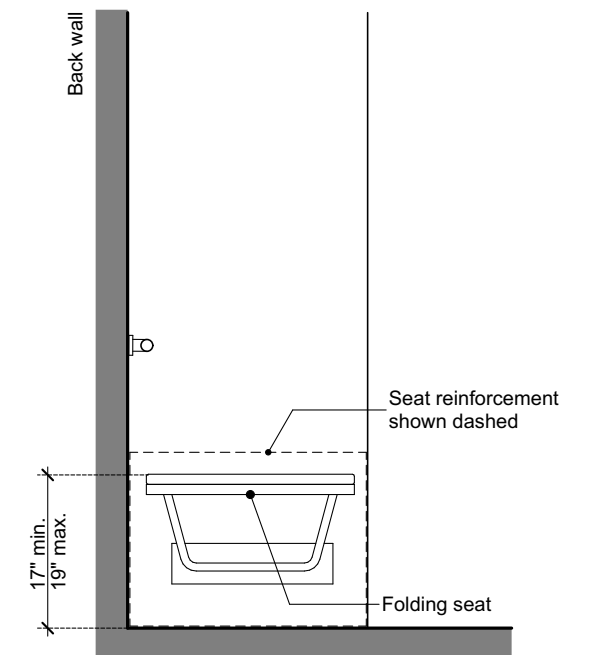
Grab Bars Plan View



A Side Wall

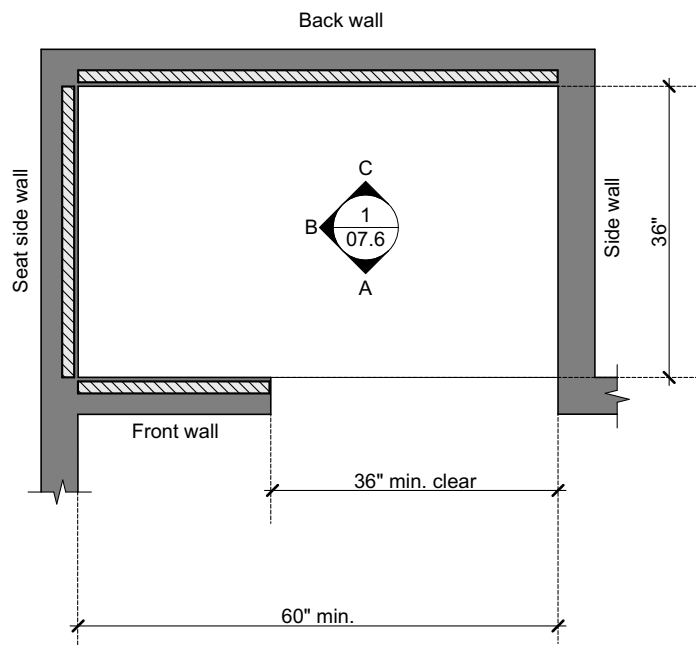


B Back Wall

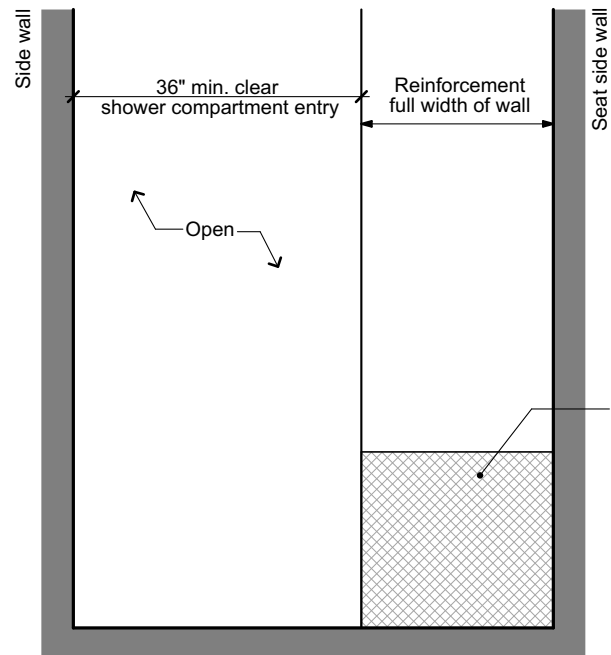


C Seat Side Wall

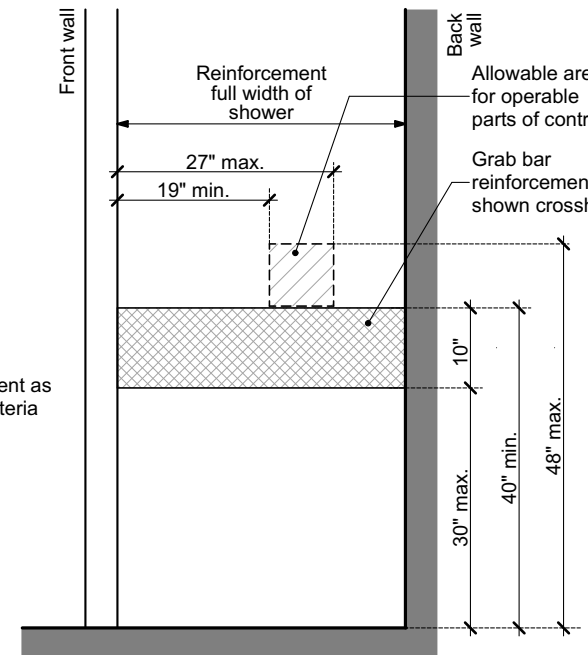
2 Grab Bars at Standard Roll-In Type Shower
07.5



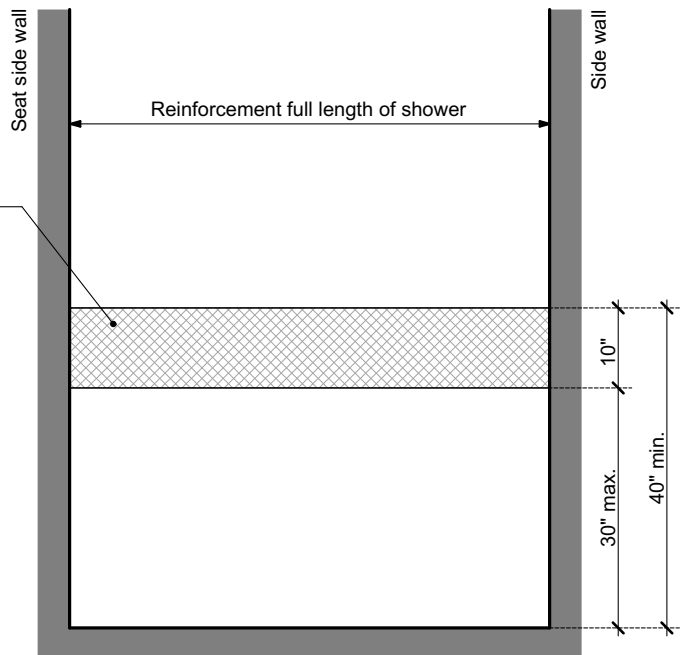
Reinforcement Plan View



A Front Wall

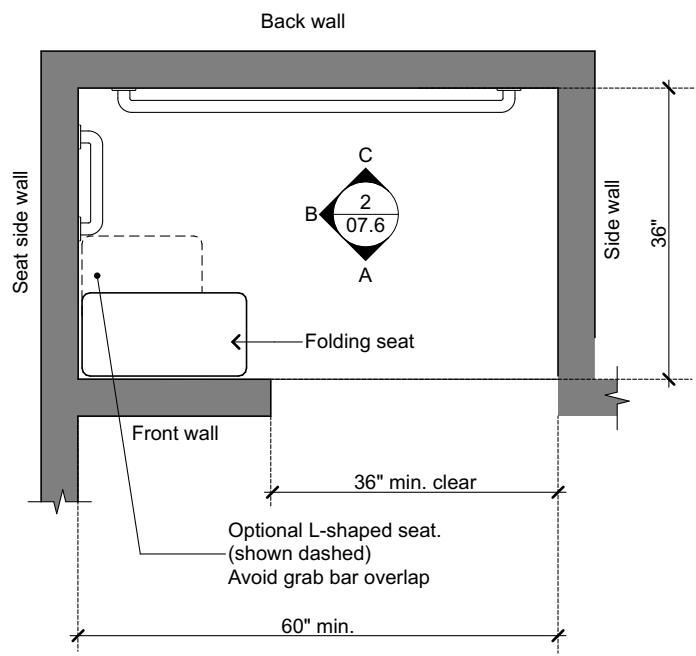


B Seat Side Wall

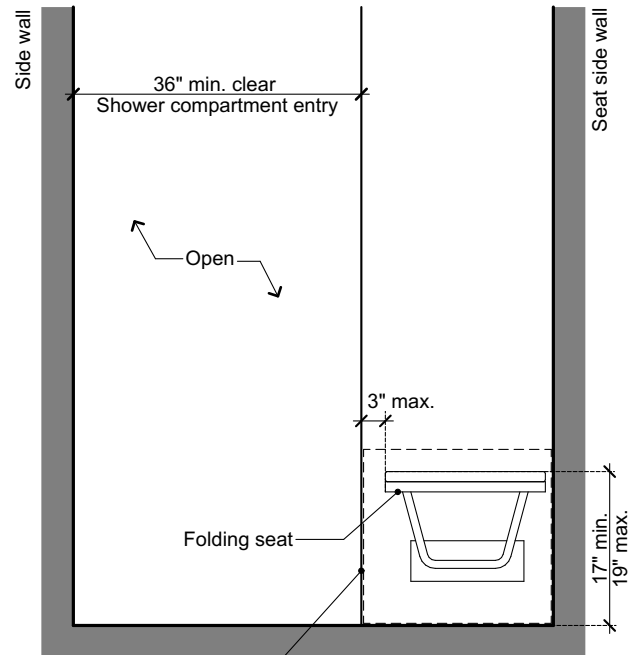


C Back Wall

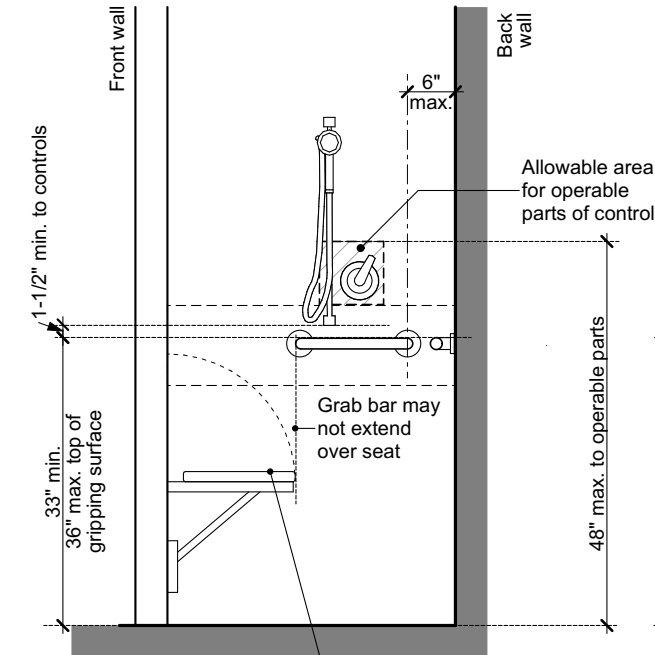
1 Reinforcement at Alternate Roll-In Type Shower
07.6



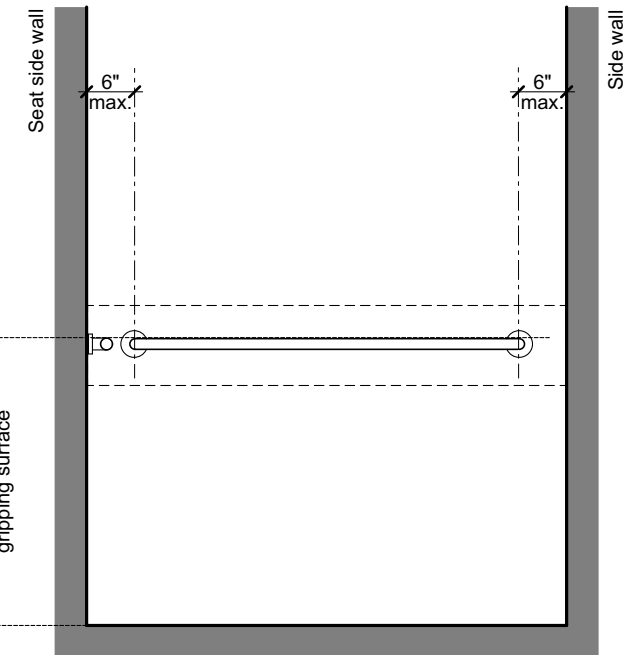
Grab Bar Plan View



A Front Wall



B Seat Side Wall



C Back Wall

2 Grab Bars at Alternate Roll-In Type Shower
07.6