

BAYVIEW PUBLIC SAFETY STRATEGIES



Safety with Respect



CITY & COUNTY OF SAN FRANCISCO

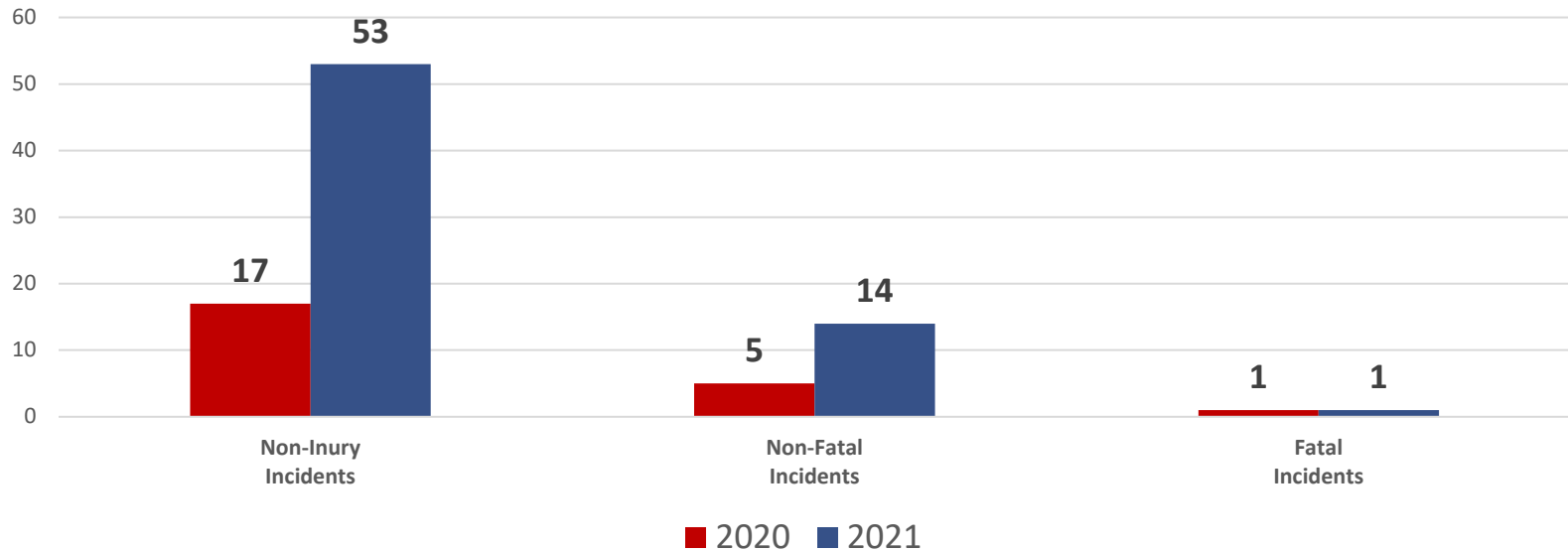
Police Department

03.10.21

The San Francisco Police Department and Bayview District Station is committed to creating a safe, healthy, and vibrant community. Our spirit is guided by a guardian mindset, and we recognize that our role as protectors is rooted in empathy, understanding, and mutual respect. One of the primary goals of the San Francisco Police Department and the Bayview Station is to reduce gun violence in the city, while reducing the use of arrest and enhancing trust building opportunities between the department and all impacted communities.

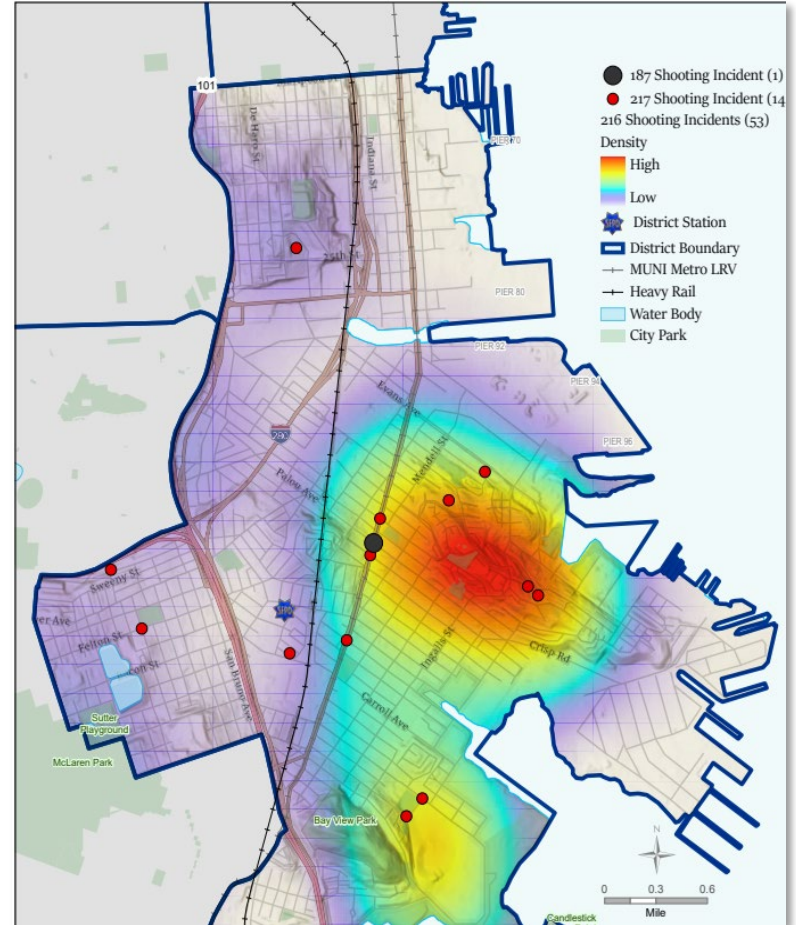
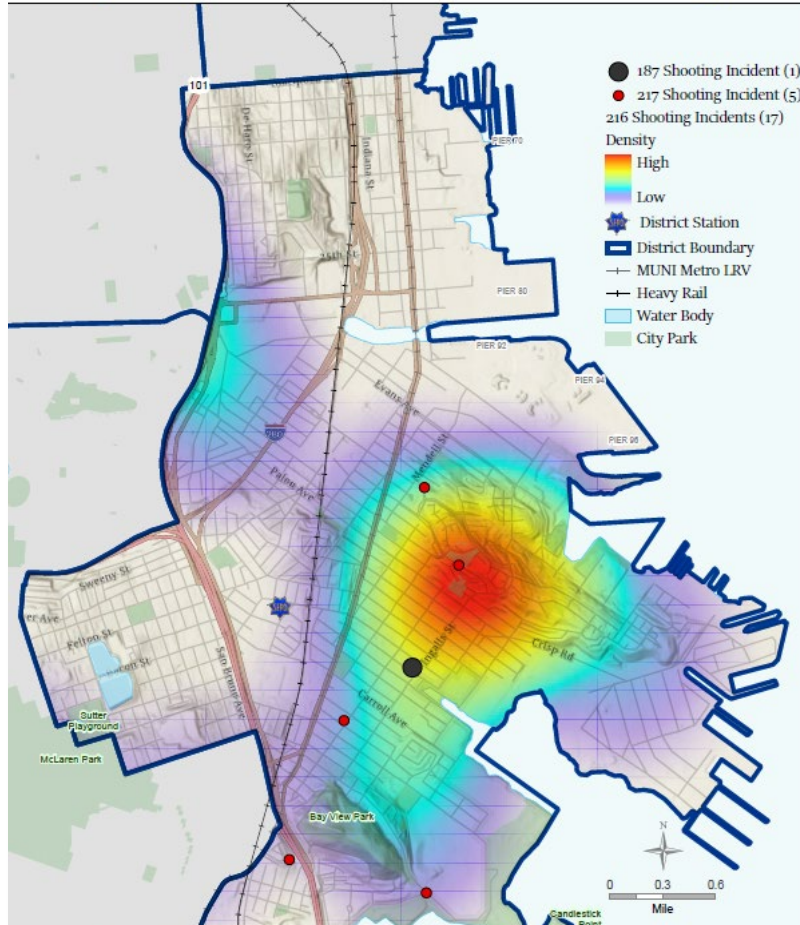
BAYVIEW GUN VIOLENCE

2020 vs. 2021 YTD
01/01 to 03/04



BAYVIEW SHOOTING INCIDENTS

YTD 2020 v. 2021 – 01/01 to 03/04



	Non-Injury Incidents	Non-Fatal Incidents	Fatal Incidents	Total Incidents
2020	17	5	1	23
2021	53	14	1	68

BAYVIEW INCIDENT ANALYSIS & DEPLOYMENT

Assessment

- Current Incident Assessment
- Crime Strategies Application
- Data Trends (i.e., homicides, shootings, etc.)

Staffing & Deployment

- Staffing analysis, foot beats and critical “hot spots”
- Investigations, case review and progressive interventions
- Deployment adjustments & violence suppression

BAYVIEW COMMUNITY & CRIMINAL JUSTICE

Community Outreach

- Partnerships with key stakeholders, community agencies
- Business and merchant partnerships

Criminal Justice Partnerships

- Investigations and case filing
- Partnerships with SF Adult Probation Department, SF City Attorney, District Attorney's Office, SF Sheriff's Department, California Department of Corrections & Rehabilitation-Division of Adult Parole Operations, and Other Bay Area law enforcement partners.

COMMUNITY PARTNERSHIPS

- Community Based Organizations
- Community Groups
- Park and Recreation Programs
- School Based Partnerships
- Youth Outreach
- Business and Merchants
- Homeowner Associations
- Housing Development Partnerships



BOYS & GIRLS CLUBS
OF SAN FRANCISCO



Community Awareness
Resources Entity

UNITED
PLAYAZ



BAYVIEW ACTION PLANS

SHORT TERM	LONG TERM
<i>SFPD Actions</i>	
Officers Reassignments	Foot beat deployment, high visibility
Environmental Assessment	California Partnerships, Phase II
Communications with Investigations	Regional Law Enforcement Partnerships
Bay Area Police Department Communications	Bureau Redeployment
<i>Other Key Actions</i>	
Ongoing Communications with Elected Officials	
Community Outreach	
Merchant and Homeowners Partnerships	
Criminal Justice Partnerships	
Social Media and Newsletters	

STRATEGY DEVELOPMENT & RESPONSE

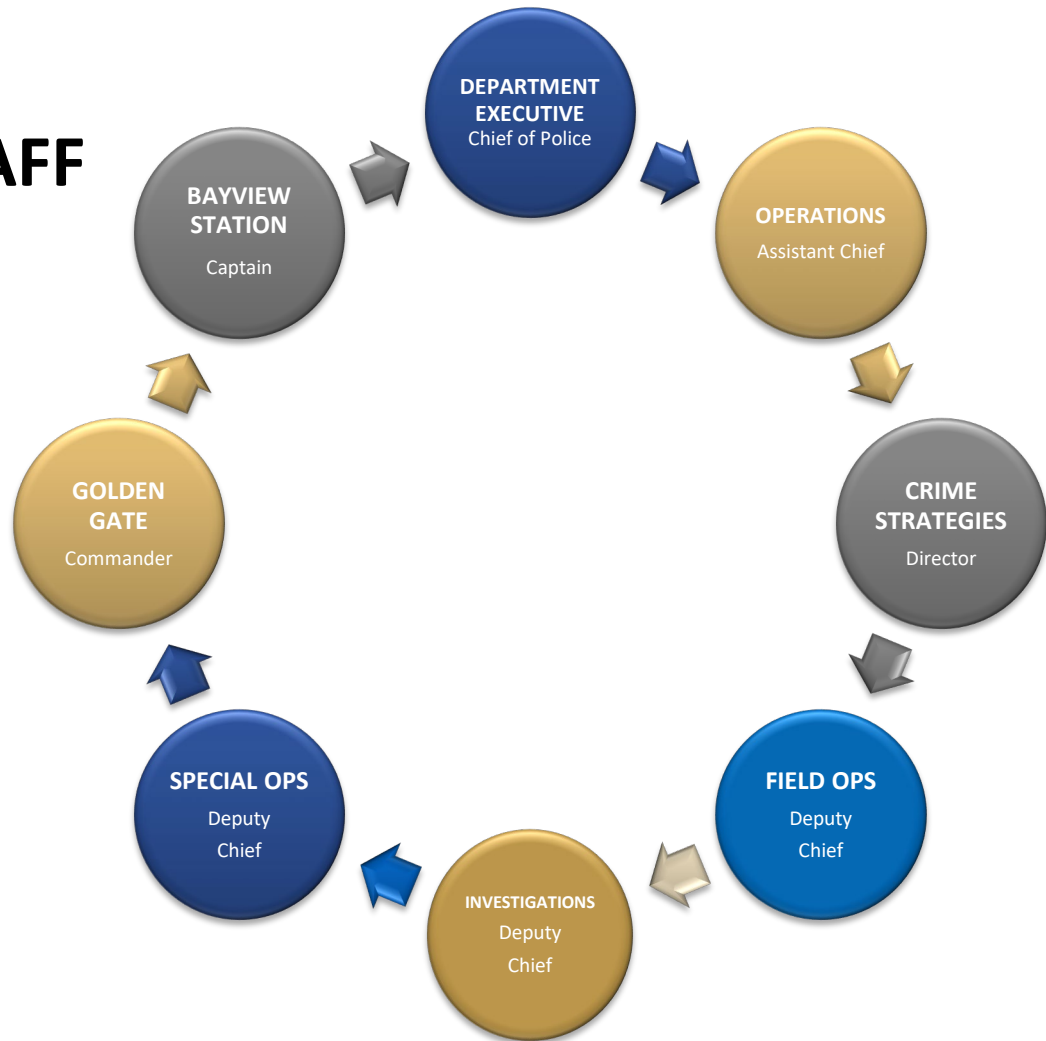
Assessment

Staffing & Deployment

Community Outreach

Criminal Justice Partnerships

DEPARTMENT STRATEGY & STAFF



KEY DEBRIEFING SESSIONS

- SFPD Chief of Police, Crime Trends Briefing
- Street Violence Response Team
- SFPD Shooting Review Meeting
(California Partnership Recommendation)
- District Station Debriefs and Action Plans

Thank you.

Any questions?