

# Safe Streets for All

Police Commission – 2020 2nd Quarter



CITY & COUNTY OF SAN FRANCISCO

Police Department

Traffic Division

## Goals and Efforts

- Continue to support Vision Zero
- Conduct High Visibility Patrol Citywide
- Conduct operations on High Injury Corridors
- Collaborate with other agencies and district stations
- Participate in community meetings
- Educate the public



## Safety with Respect



**SFPDTrafficSafety** @SFTrafficSafety · Apr 28  
Traffic Company solos in the areas of Lake Merced and 19th Avenue.  
@SFPDTaraval @VisionZeroSF @D4GordonMar @SFPD



**SFPDTrafficSafety** @SFTrafficSafety · May 3  
Traffic Company patrolling the Ingleside and Bayview this afternoon.  
@VisionZeroSF @SFPDIngleside @SFPDBayview @SFPD



**SFPDTrafficSafety** @SFTrafficSafety · May 6  
Traffic Company in doing enforcement in the area of Nevada and Cortland.  
This in response to community concerns about drivers ignoring speed limits  
and stop signs.  
@SFPDIngleside @VisionZeroSF @SFPD



**SFPDTrafficSafety** @SFTrafficSafety · May 8  
Traffic Company with Ingleside Station conducting a pedestrian safety  
operation at Theresa and Alemany. This is a Focus on the Five violation. Must  
yield to pedestrians in a crosswalk. @VisionZeroSF @SFPDIngleside @SFPD



## Safety with Respect



**SFPDTrafficSafety** @SFTrafficSafety · May 11

Solos on the Embarcadero and Townsend. They're at 7th St/Mission, & 13th St / South Van Ness Ave. Rain is teasing right now. Let's stay alert and slow down a bit. Enjoy your day. @VisionZeroSF @SFPDCentral @SFPDSouthern @SFPD @SFPDPerea



**SFPDTrafficSafety** @SFTrafficSafety · May 12

Our Vision Zero Enforcement found itself addressing traffic violations in the Embarcadero; on Polk, Battery, Union and Larkin streets today. Slow down, be vigilant and stay safe. @VisionZeroSF @SFPDPerea @SFPD @SFPDCentral @SFPDNorthern



SFPDTrafficSafety Retweeted



**SFPDCommunityEngagementCares** @SFPDCares · May 13

@SFPD and community members reminding everyone the importance of social distancing. They'll be in the OMI/Lakeview/Excelsior/Sunnydale Community Resilience Caravan #CommunityEngagement @SFPDChief



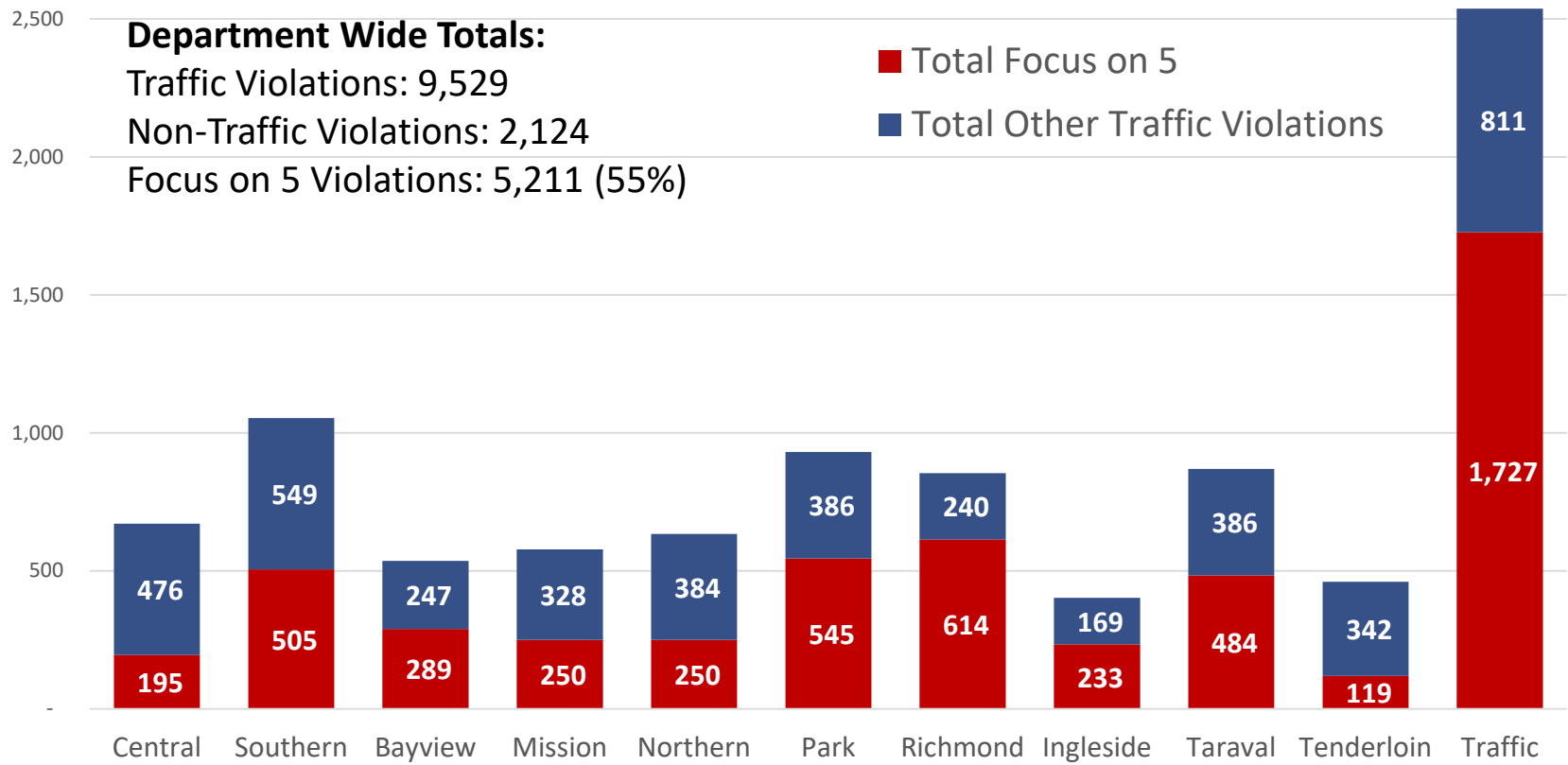
**SFPDTrafficSafety** @SFTrafficSafety · May 28

Going over the plan for the Bayview Community Resilience Caravan. @SFPD @SFPDCares @SFPDPerea @SFPDBayview





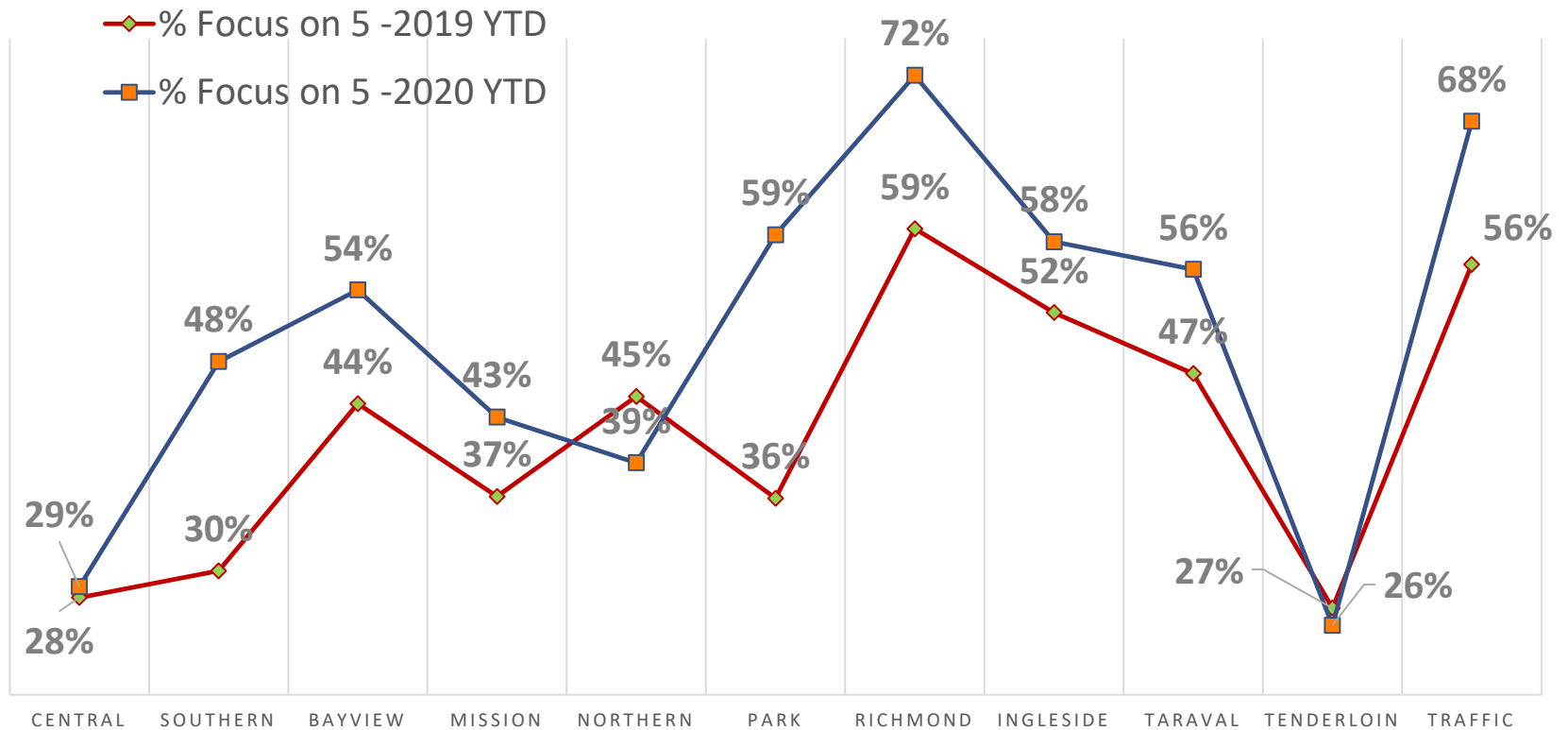
## Traffic Violations Issued by Unit: January ~ June 2020



<b>Total Traffic Violations</b>	<b>671</b>	<b>1,054</b>	<b>536</b>	<b>578</b>	<b>634</b>	<b>931</b>	<b>854</b>	<b>402</b>	<b>870</b>	<b>461</b>	<b>2,538</b>
<b>Focus on 5 %</b>	<b>29%</b>	<b>48%</b>	<b>54%</b>	<b>43%</b>	<b>39%</b>	<b>59%</b>	<b>72%</b>	<b>58%</b>	<b>56%</b>	<b>26%</b>	<b>68%</b>



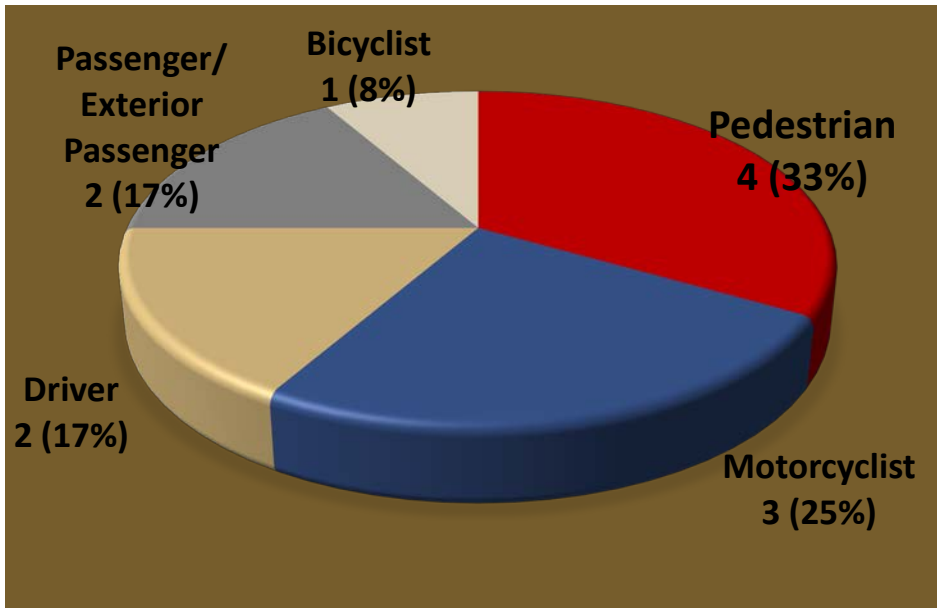
## Focus on Five Violations Percentage 2019 YTD vs 2020 YTD



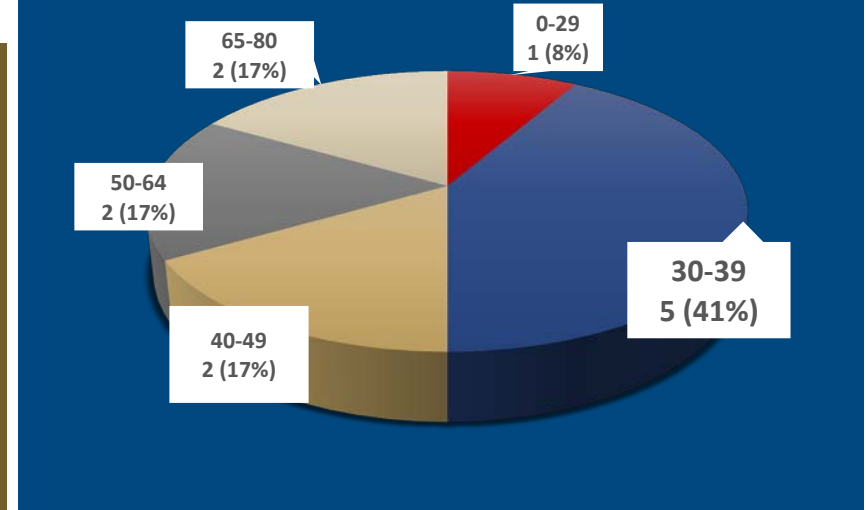
2019 YTD - % Focus on 5 Violations: 47%

2020 YTD - % Focus on 5 Violations: **55%**

## SF Vision Zero Traffic Fatality: 01/01/2020 – 6/30/2020



## Age of Vision Zero Traffic Fatality



Victim	Total Count	Age of Victim
Pedestrian	4	80, 67, 63, 49
Motorcyclist	3	53, 36, 30
Driver *	2	45, 28
Passenger */ Exterior Passenger **	2	32, 39
Bicyclist	1	31
Grand Total	12	12

\*A single vehicle collision causing death of a driver and a passenger.

\*\*Individual fell from riding on the rear, exterior, coupler of a Muni light rail vehicle.

- A single person operating special equipment for construction purposes excluded from count of SF Vision Zero Traffic Fatality.

# SF Traffic Fatalities: January ~ June 2020

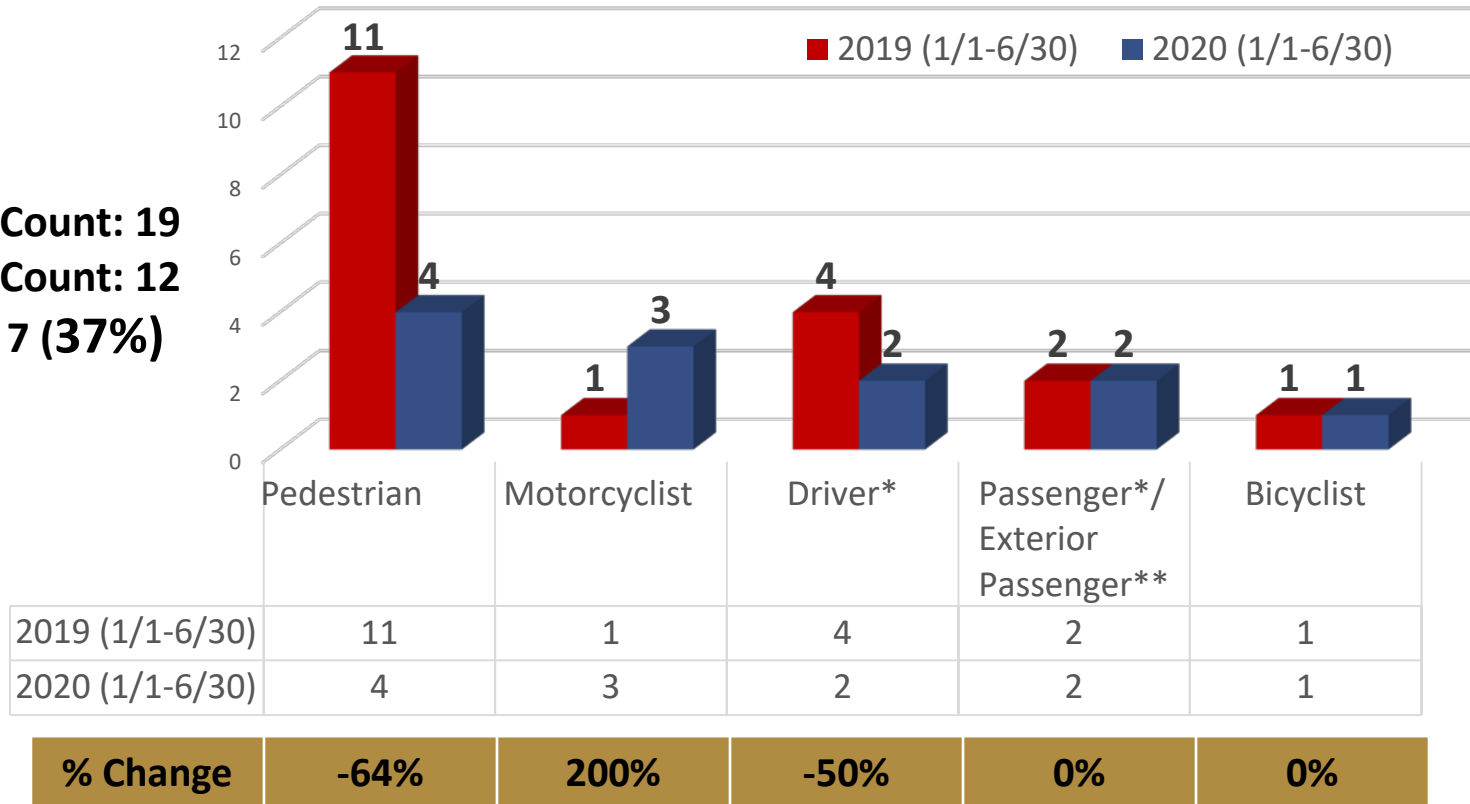
## Fatality Tracking (Includes Non-Vision Zero), San Francisco, CA





## SF Vision Zero Traffic Fatality 2019 YTD vs 2020 YTD

**2019 YTD Count: 19**  
**2020 YTD Count: 12**  
**Decrease: 7 (37%)**



2020 YTD:

\*A single vehicle collision causing death of a driver and a passenger.

\*\*Individual fell from riding on the rear, exterior, coupler of a Muni light rail vehicle.

- A single person operating special equipment for construction purposes excluded from SF Vision Zero counts.



Thank you.

Questions?