



# Showplace Square **Open Space** Planning Process

**MEETING  
NO. 1**

WEDNESDAY  
**06.24.2009**

**WALKING  
TOUR**

TUESDAY  
**06.16.2009**

**SCOPING  
MEETING**

WEDNESDAY  
**04.29.2009**

SAN FRANCISCO  
**PLANNING DEPARTMENT**

# Workshop Agenda

## 1. Introductory Presentation

- Background and Context
- Overview of Open Space Opportunities

## 2. Small Group Discussions

- “What kinds of open space would you like to see in the neighborhood?”
- “What is your vision of each of the open space opportunity sites?”
- “What is your preferred route for a green connector street through Showplace Square?”

## 3. Report back

## 4. Next Steps





## Goal of this Meeting

- To brainstorm a vision for Showplace's open space, given constraints on available land and resources.
- To enable the Planning Department to develop conceptual drawings of each of the opportunity sites that reflects the community's desire.



## How We Got Here

### ▪ **Eastern Neighborhoods: ~1999 to 2008**

- Rezoning enables substantial residential development in Showplace Square
- Community identified open space opportunity sites (contained in Showplace Square/Potrero Hill Area Plan)
- Final agreement prioritized this Planning Process

### ▪ **Scoping Meeting: April 29, 2009**

- Established timeline, format, and geography for Planning Process

### ▪ **Walking Tour: June 16, 2009**

- Walked neighborhood
- Visited opportunity sites
- Opportunity for community members to share knowledge and ideas



# Showplace Square Open Space Planning Process

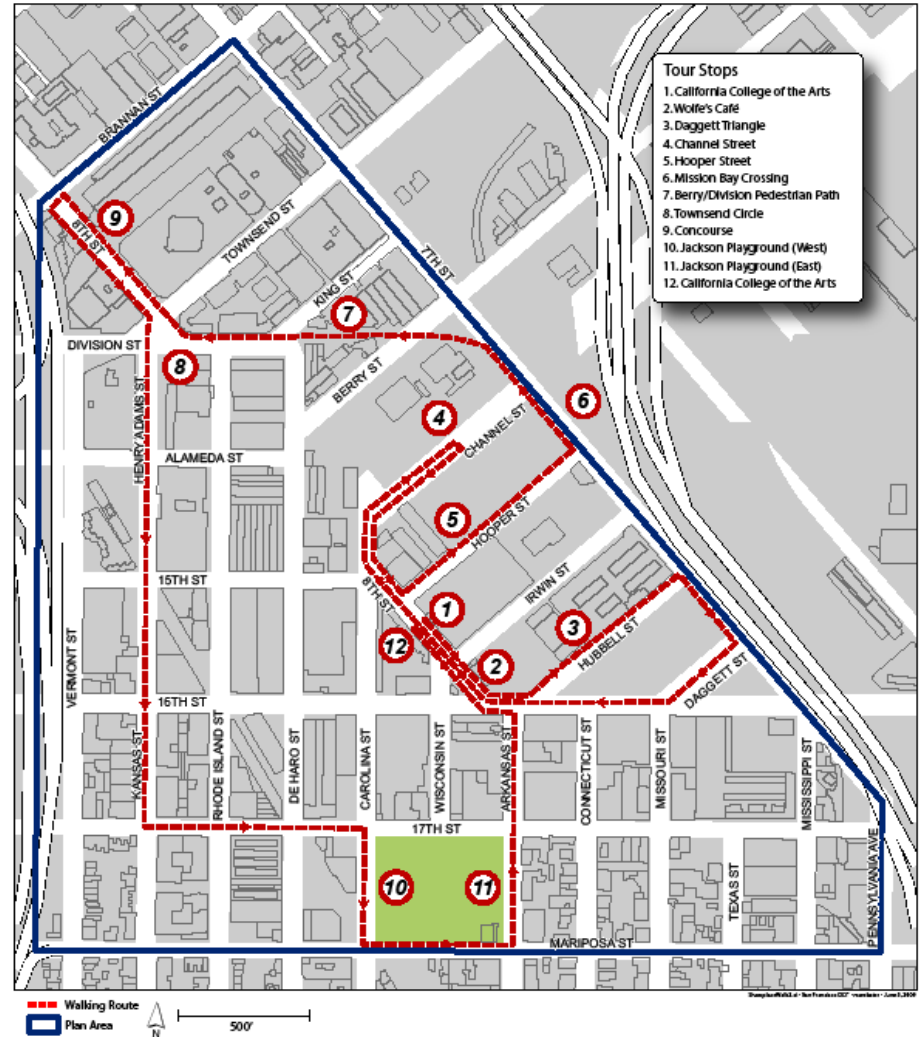


## Showplace Square Open Space Planning Process

# Walking Tour



SHOWPLACE SQUARE OPEN SPACE AREA PLAN WALKING TOUR



## What Else Is Going On?

### ■ Recreation and Open Space Element (ROSE)

- Element of the General Plan, the City's guiding policy document
- Outlines the City's vision for open space
- Draft available now for public review ([www.sfplanning.org](http://www.sfplanning.org))

### ■ Pavement-to-Parks Program:

- Seeks to convert excess automobile rights-of-way into open space
- Projects are temporary with option of becoming permanent based on community input
- First temporary plaza – Castro Commons (17<sup>th</sup> and Castro) opened in May
- Mayor Newsom identified the Wolfe's Café site as one of the next three projects – to be opened by this Labor Day

### ■ Better Streets Plan:

- Intended to improve pedestrian environment by creating standards for good streets
- Will be used for developing our “green connector street” through Showplace
- Draft available for public review



## Pavement-to-Parks Program: “Castro Commons”

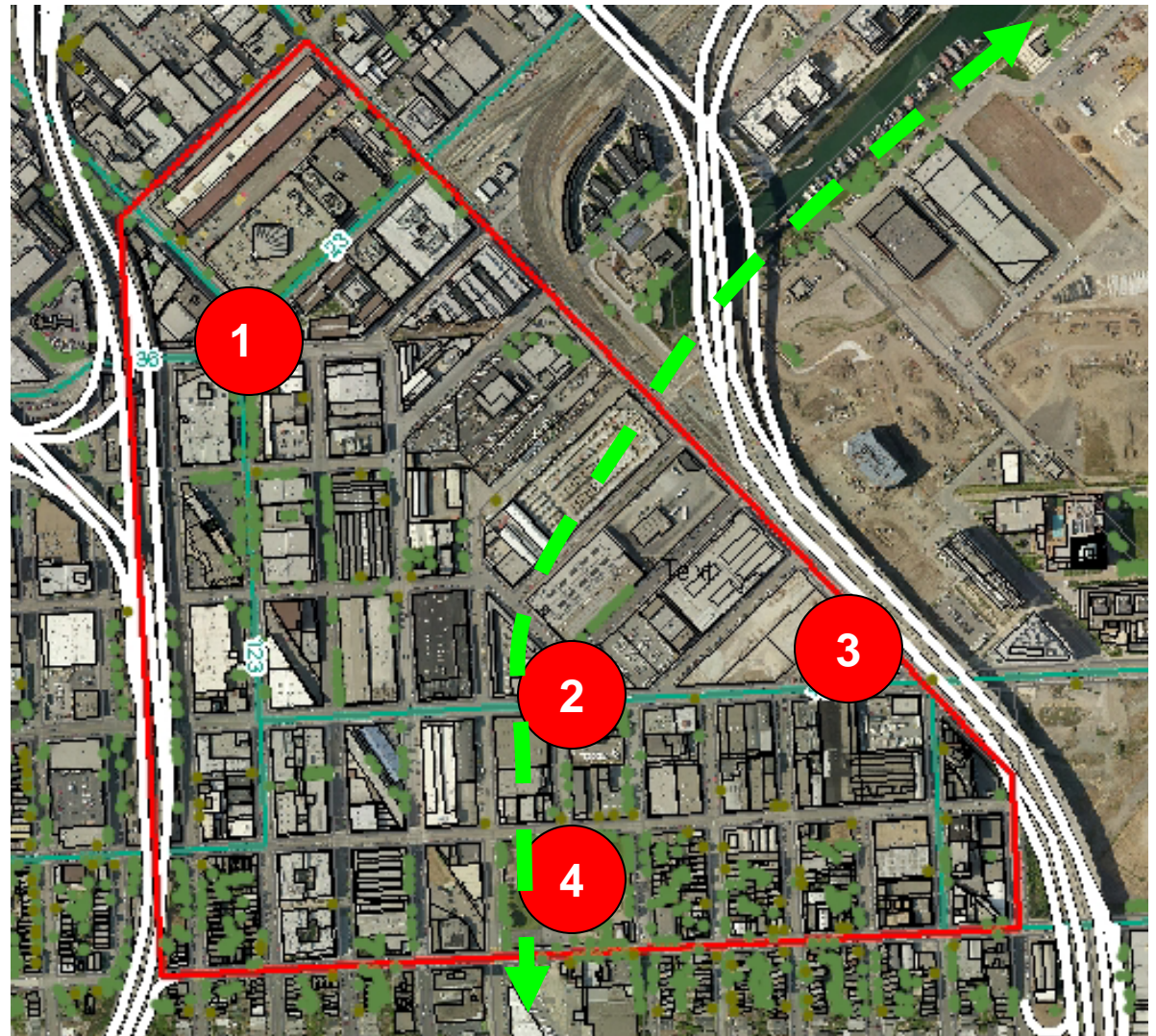




## Open Space Opportunity Sites

1. Townsend Circle
2. “Wolfe’s Café” site
3. Daggett Triangle
4. Jackson PG extension

Connector Street -  
Corridor



## “Wolfe’s Café” site





## Townsend Circle Site

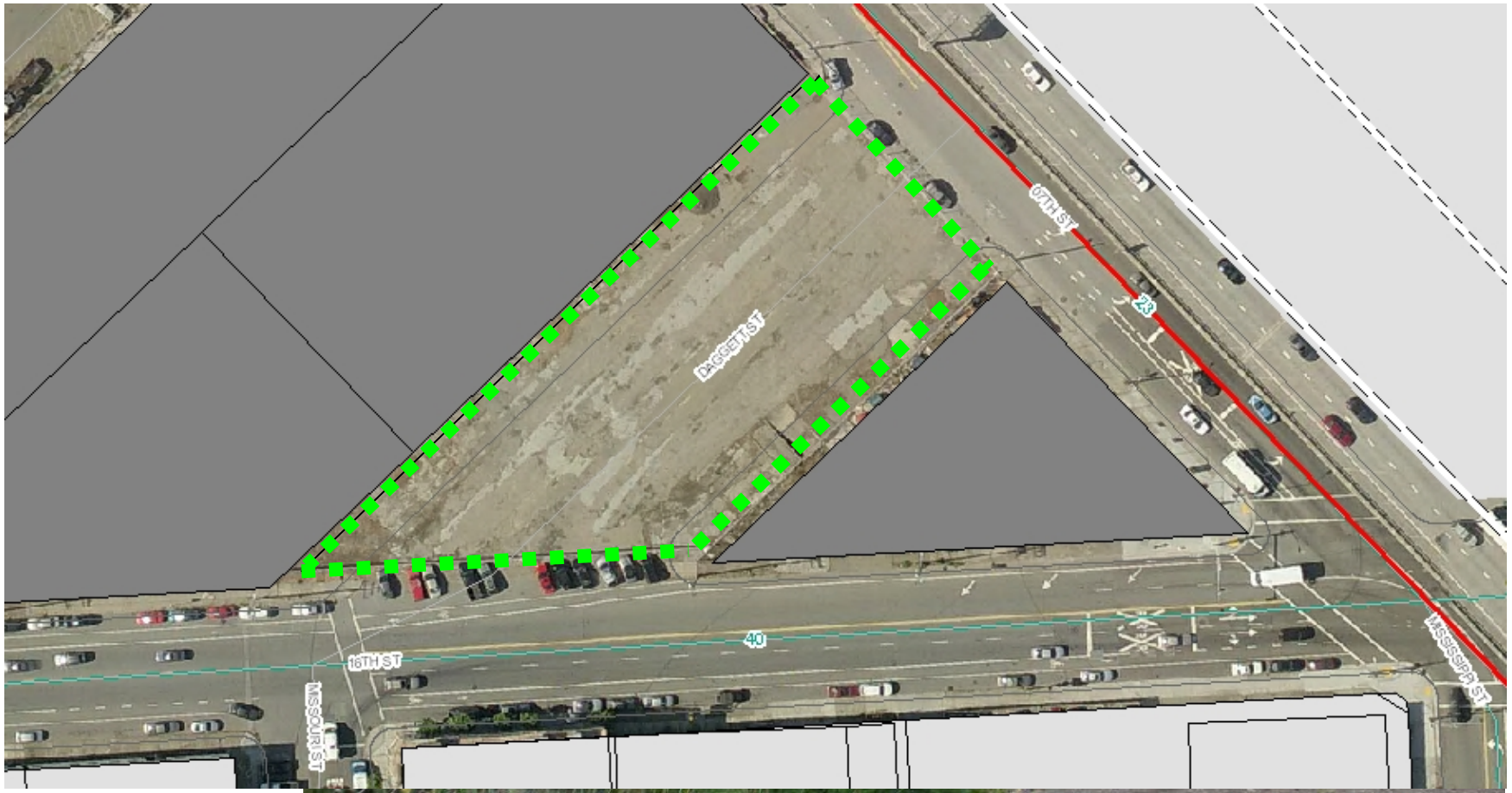


**Townsend Circle  
Townsend & 8th St.**



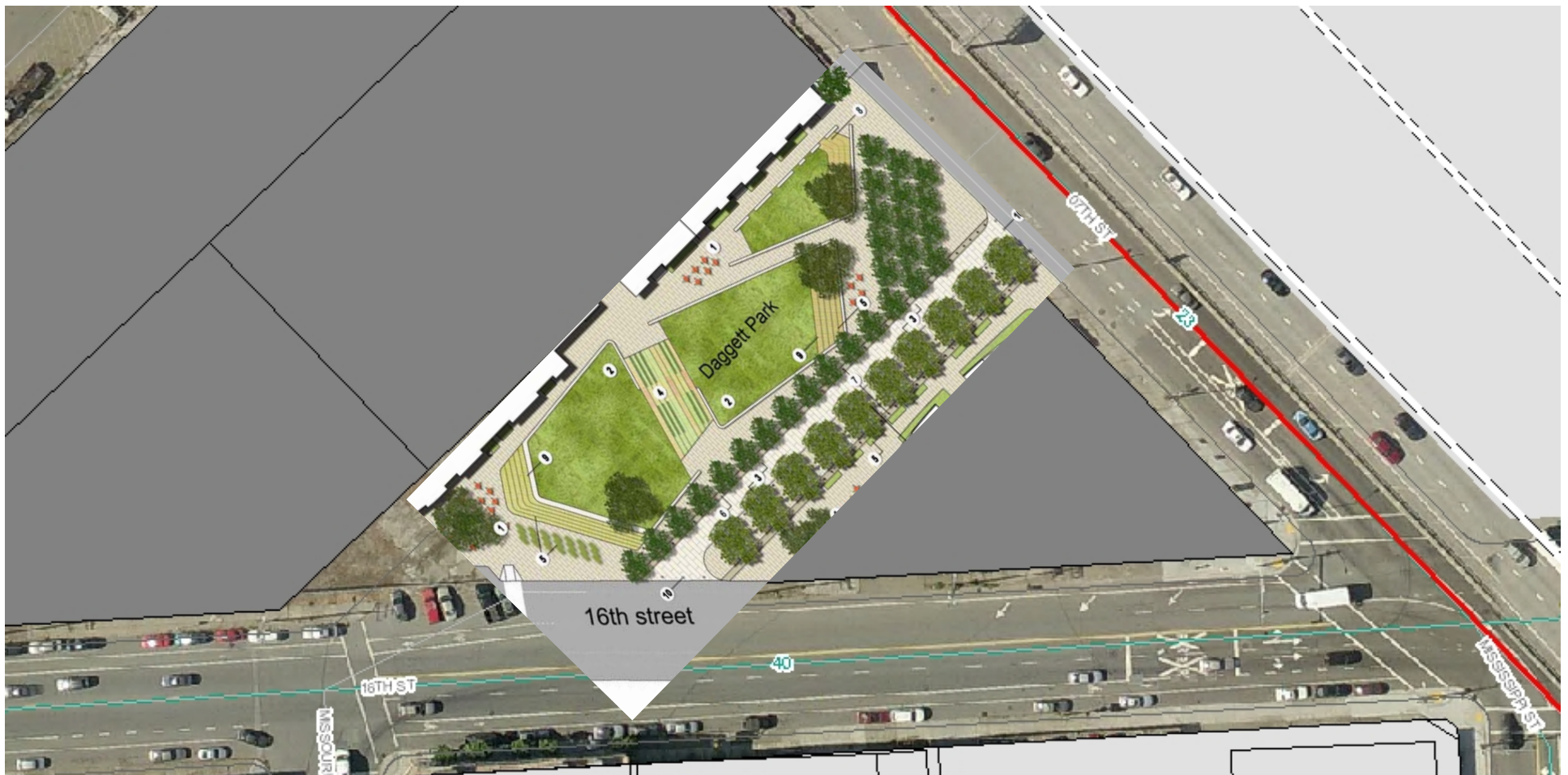


## Daggett Triangle



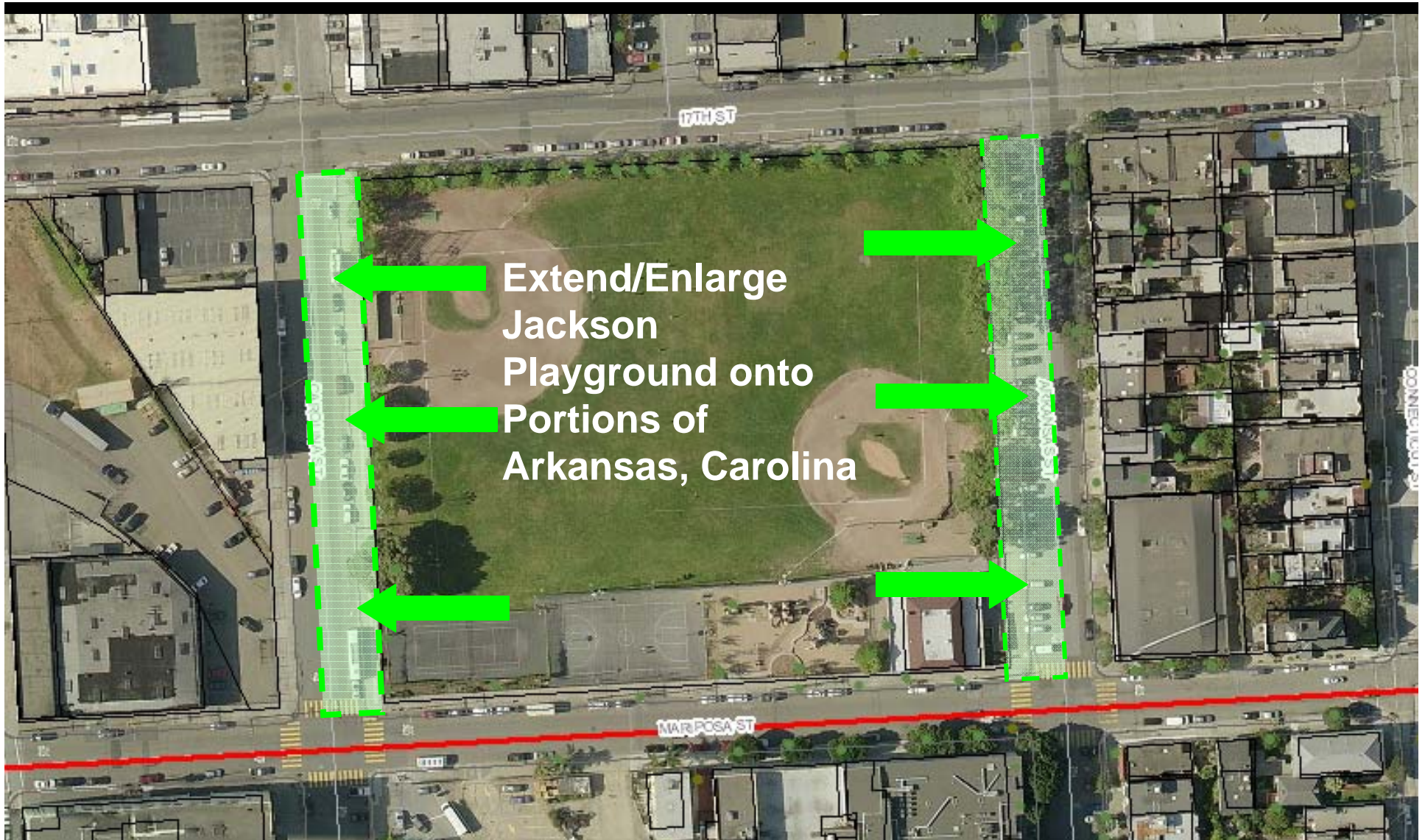
## Daggett Triangle

- Developer's design concept alternative





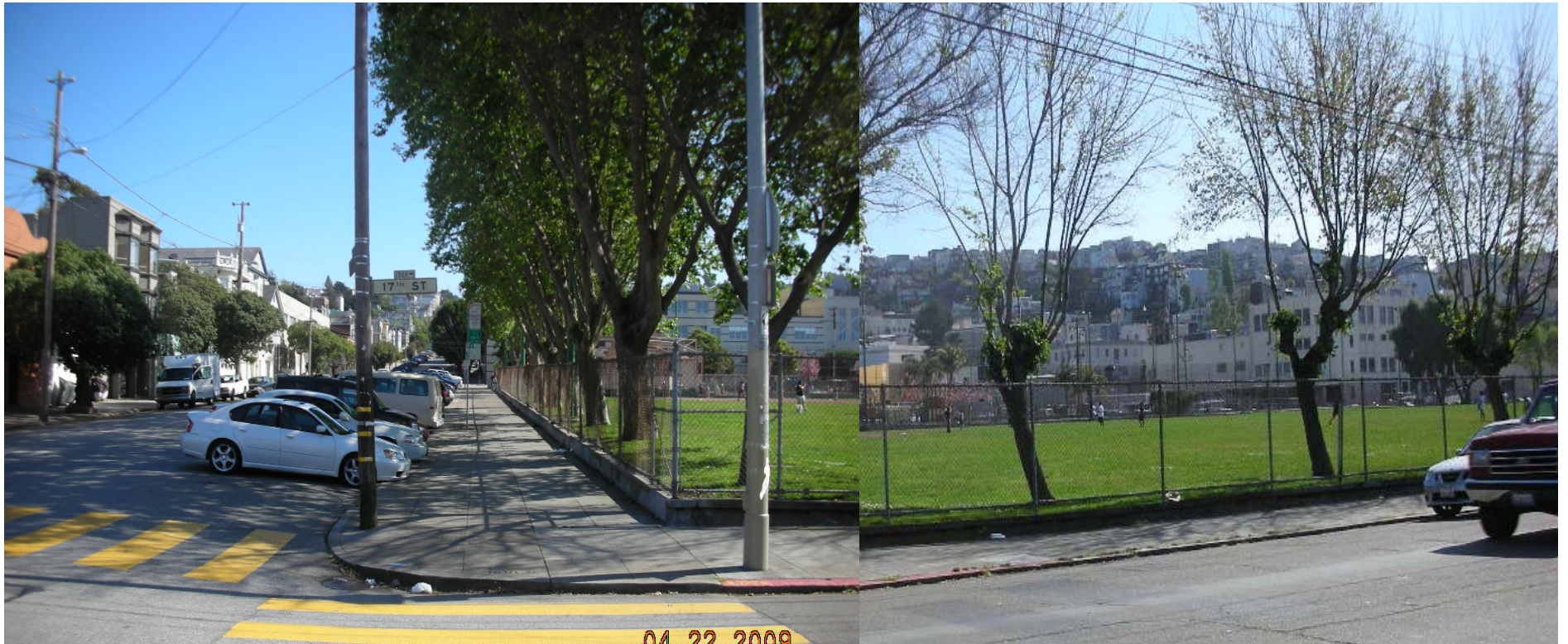
## Jackson Playground - Extension





## Jackson Playground Extension

### Arkansas @ 16<sup>th</sup> Street



## Potential Open Space Features

- Potential Open Space Features
- Examples & Ideas

## Showplace Square Open Space Planning Process

### ACTIVE USES

sports  
play areas  
games  
walking  
tennis  
basketball  
dog walking



### Potential Open Space Elements



### PASSIVE / COMMUNITY USES

reading  
seating  
people watching  
observing nature

### OTHER FEATURES

art, sculpture  
water  
sustainable features



## Active uses

- Sports - courts
- Play Areas



## Showplace Square Open Space Planning Process

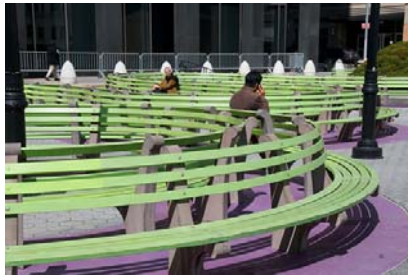
### Active uses





## Passive Uses / Community Gathering

- People watching
- Seating
- Reading
- Observing nature



Park-ing Space Day



## Passive Uses

- Landscape and gardens
- Natural areas and water features
- Walkways
- Socializing
- Game tables
- Picnic areas



## Water Feature - Architectural Elements



**Water Garden, Portland, OR**



**Gazebo**





## Public Art



24th & York Street Mini-park - Mural

[Henk Hofstra](#) - "Urban River,"  
Drachten, Holland.



# Community Gardens





## Special Events

### Farmers markets



**Many SF neighborhoods  
have farmers markets**



### Street Fairs





## Other Open Space Examples

- **Patricia's Green - Octavia Blvd. row**
- Approximately same size as Dagget Triangle site



South Park



## Sustainable Design

Use primarily low water-use plants (native plants and Mediterranean plants) to reduce water use.

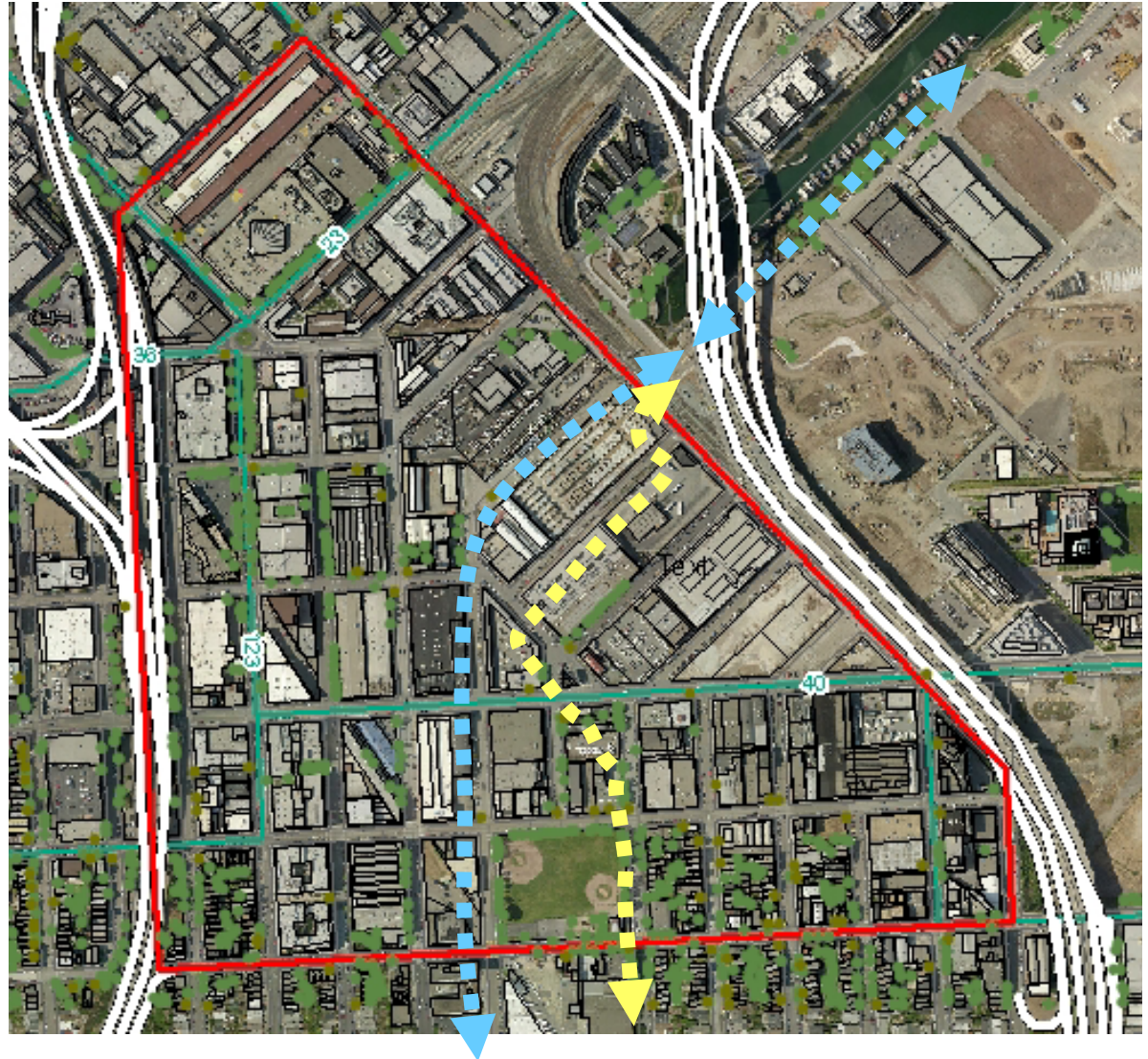
Use softscape & permeable pavement to Recharge groundwater and reduce demands on City's Clean Water system. Collect water for irrigation / reuse.





## Potential Green Connector Corridors

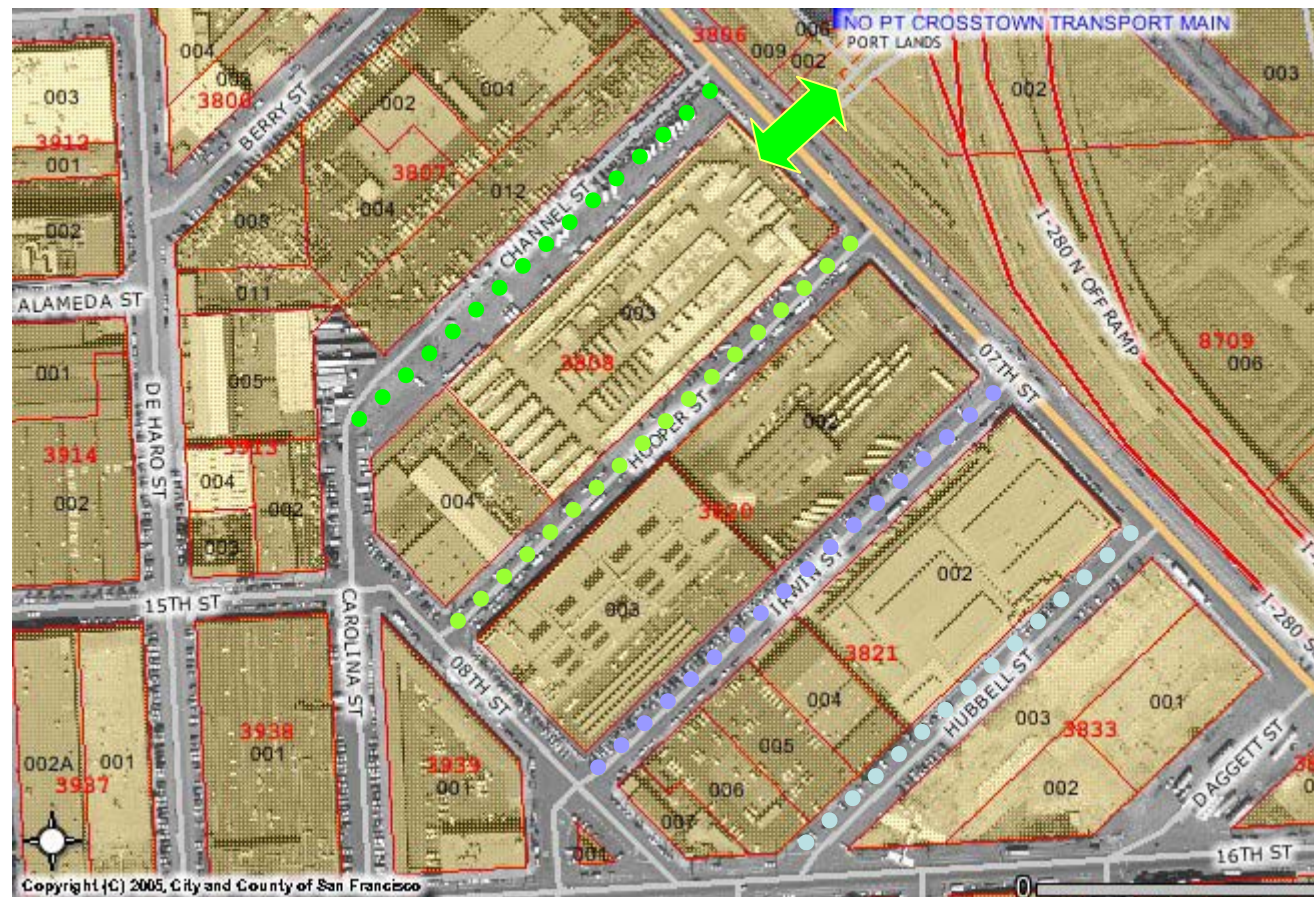
**Mission Bay  
Connector from  
Potrero Hill through  
Showplace Square**





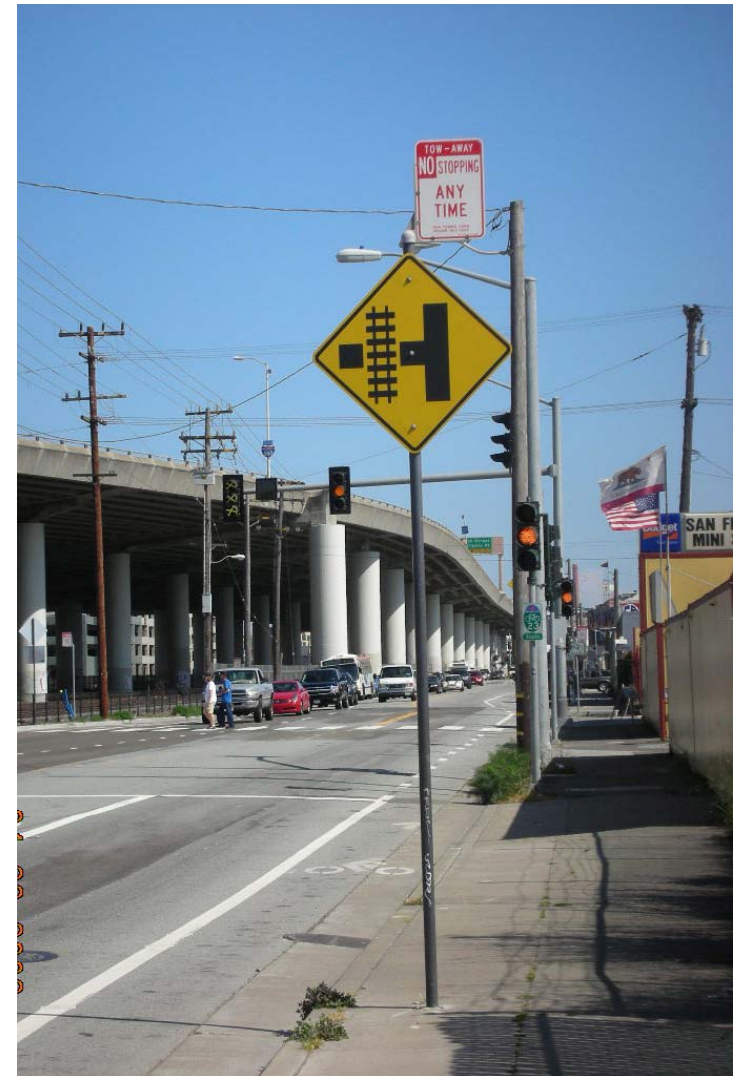
## Channel / Hooper / Irwin / Hubble

- **Corridor connection to Mission Bay**



## Connection to Mission Bay

- 7<sup>th</sup> St. near Channel
  - Pedestrian crosswalk at 7<sup>th</sup> Street between Channel and Hooper Streets.
  - No sidewalk north side of 7<sup>th</sup> Street.
  - Traffic signal moved from Berry.





## Connection to Mission Bay

- Channel St.



- Hooper St.



## Break out into Groups

- What are **YOUR** open space ideas for Showplace Square?
  - Break-out into small groups
  - Offer ideas
- 
- Each Group will have a Planner, Base maps & work sheets
  - Mark up maps & worksheets with your ideas for open space
  - Report back to the Group as a whole



## Small Discussion Groups

“What kinds of open space would you like to see in the neighborhood?”

“What is your vision of each of the open space opportunity sites?”

“What is your preferred route for a green connector street through Showplace Square?”

## NEXT STEPS

- Planning Dept. will compile comments and create schematic designs for each site
- We will post schematic plans on our Website in mid- to late-August
- Schedule next workshop to review and discuss schematic designs
- Questions / Comments



## **Showplace Square Open Space** Planning Process

For more information,  
visit our website at...

**<http://showplace.sfplanning.org>**